

Willowbrook

Jefferson Premier LOT 136

1421 NW Willow Parkway R Madras, OR 97741

🏠 4 Bedrooms

🚿 2.5 Bathrooms

📏 1,761 Sq. Ft.

🚗 2 Car Garage

🏷️ 409,900

UNDER CONSTRUCTION



T - TRADITIONAL



- Guest Suite or Den on Main Level
- 9 Foot Ceilings on Main Level
- Kitchen Island with Sink
- Kitchen Corner Pantry

- Great Room with Electric Fireplace
- Primary Suite with Walk-in Closet
- Quartz Countertops throughout Home
- Stainless Steel Appliances

MonteVista HOMES

541-234-8789

In a continual effort to improve our product, MonteVista Homes reserves the right to change product design, features, materials, floor plans, specifications, prices and terms without prior notice. Square footage stated or implied are approximate. Images may be representative of future home and show what's possible not what's included. Seller is a licensed real estate broker in the State of Oregon. CCB#203709



Willowbrook

Jefferson Premier LOT 136

1421 NW Willow Parkway R Madras, OR 97741

🛏 4 Bedrooms

🚿 2.5 Bathrooms

🏠 1,761 Sq. Ft.

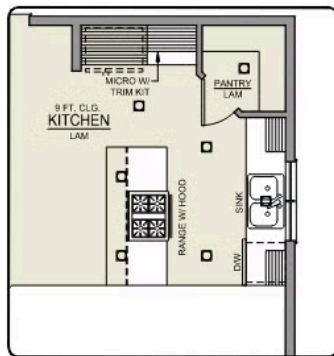
🚗 2 Car Garage

🏷 409,900

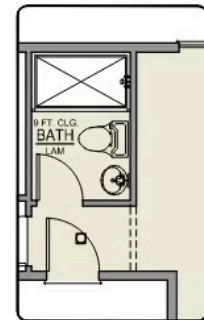
Jefferson 2-Car

1,761 Sq. Ft.

4 Bedroom, 2.5 Bath



ISLAND HOOD OPTION



BATHROOM OPTION



MAIN FLOOR

Willowbrook

Jefferson Premier LOT 136

1421 NW Willow Parkway R Madras, OR 97741

🛏 4 Bedrooms

🚿 2.5 Bathrooms

🏠 1,761 Sq. Ft.

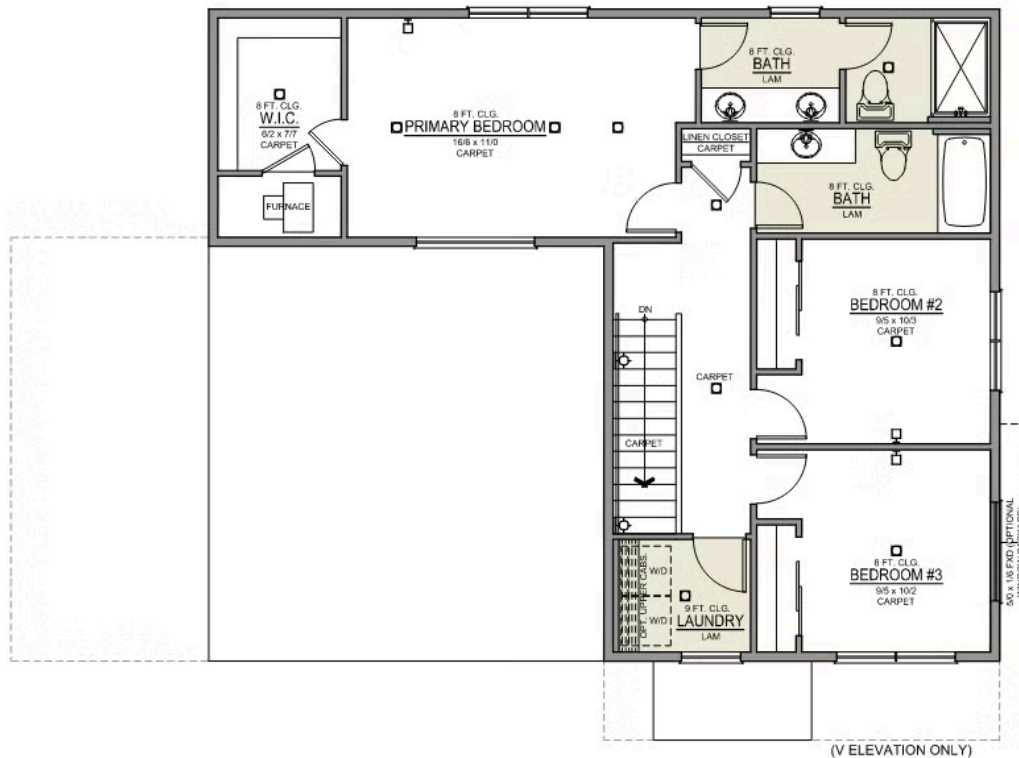
🚗 2 Car Garage

🏷 409,900

Jefferson 2-Car

1,761 Sq. Ft.

4 Bedroom, 2.5 Bath



UPPER FLOOR

 4 Bedrooms  2.5 Bathrooms  1,761 Sq. Ft.  2 Car Garage  409,900

- Interior Color Package: "Crystal Heights". Painted Cabinets (All cabinets in house MUST be selected as "PAINTED")
- Exterior Color Package: Cascade Falls
- Light Fixtures: Acadia
- Doors: Hardware Standard. "Cove" knobs / "Amador" front door handle.
- Bathroom: Upgraded finishes in SRS. Soaker Tub NOT included. All bathrooms. (Plumbing Fixtures, bath accessories and shower door hardware). *SRS = Spot Resistant Stainless.
- Bathroom: Shower Enclosure(s) Glass Color Choice
- Electrical: Tech Package Pre Wire - Includes Panel, 110 outlet, 1 Dual Wall Plate (Coax & Ethernet) in Great Room
- Windows Package: Optional Windows
- Kitchen: 36" Cabinets. PAINTED Kitchen & Bathroom Cabinets.
- Cabinets: Specify Color of Knobs and Pulls
- Counters: Quartz Counters and Backsplash in Kitchen
- Counters: Quartz Counters and Backsplash in Guest Bath
- Counters: Quartz Counters and Backsplash in Primary Bath
- Bathroom: JEFFERSON only - Add 5' Fiberglass Walk-In Shower to downstairs Powder Room.
- Kitchen: Pendant Lights over Kitchen Island - In place of recessed LED
- Doors: Kitchen Pantry Door w/ Glass (Frosted w/ Border).
- Flooring: Great Room - Wood Laminate (Casita Court)
- Garage: Garage Door Opener
- Garage: Garage Door Opener Wireless Keypad
- HVAC: Air Conditioner PreWire. Dedicated 220 Outlet (For AC or Mini Split)
- Fireplace: Gas Fireplace (Direct Vent) with Mantel and Stone Surround
- Exterior: Stone on all Front Column(s)
- Exterior: Stone Garage Wing Wall
- Kitchen or Laundry Sink: Upgrade Faucet to Moen Arbor. SPECIFY Location(s) and Color (Kitchen or Laundry, and Black or Spot Resistant Stainless).