

Willowbrook

McKenzie
LOT 153

1050 NW Fairway Rd. Madras, OR 97741

🏠 3 Bedrooms

🚿 2 Bathrooms

🏠 1,488 Sq. Ft.

🚗 2 Car Garage

🏷️ 449,997

SUMMER SAVINGS HAPPENING NOW!



MCKENZIE FARMHOUSE ELEVATION



The McKenzie is a compact, well-designed home that makes the most of its 1,488 square feet. A sizeable kitchen opens into the great room to create a connected, welcoming space for everyday living. Three bedrooms and two baths offer comfortable areas for rest, guests, or quiet routines, all within an easy-to-maintain footprint. With its practical layout and warm, approachable feel, the McKenzie supports the kind of simple, steady routines that make a home feel lived-in and loved. This home borders the golf course and has beautiful mountain views of Mt. Jefferson plus has a side concrete pad for your RV or boat.

MonteVista
HOMES

541-234-8789

In a continual effort to improve our product, MonteVista Homes reserves the right to change product design, features, materials, floor plans, specifications, prices and terms without prior notice. Square footage stated or implied are approximate. Images may be representative of future home and show what's possible not what's included. Seller is a licensed real estate broker in the State of Oregon. CCB#203709



Willowbrook

McKenzie
LOT 153

1050 NW Fairway Rd. Madras, OR 97741

3 Bedrooms

2 Bathrooms

1,488 Sq. Ft.

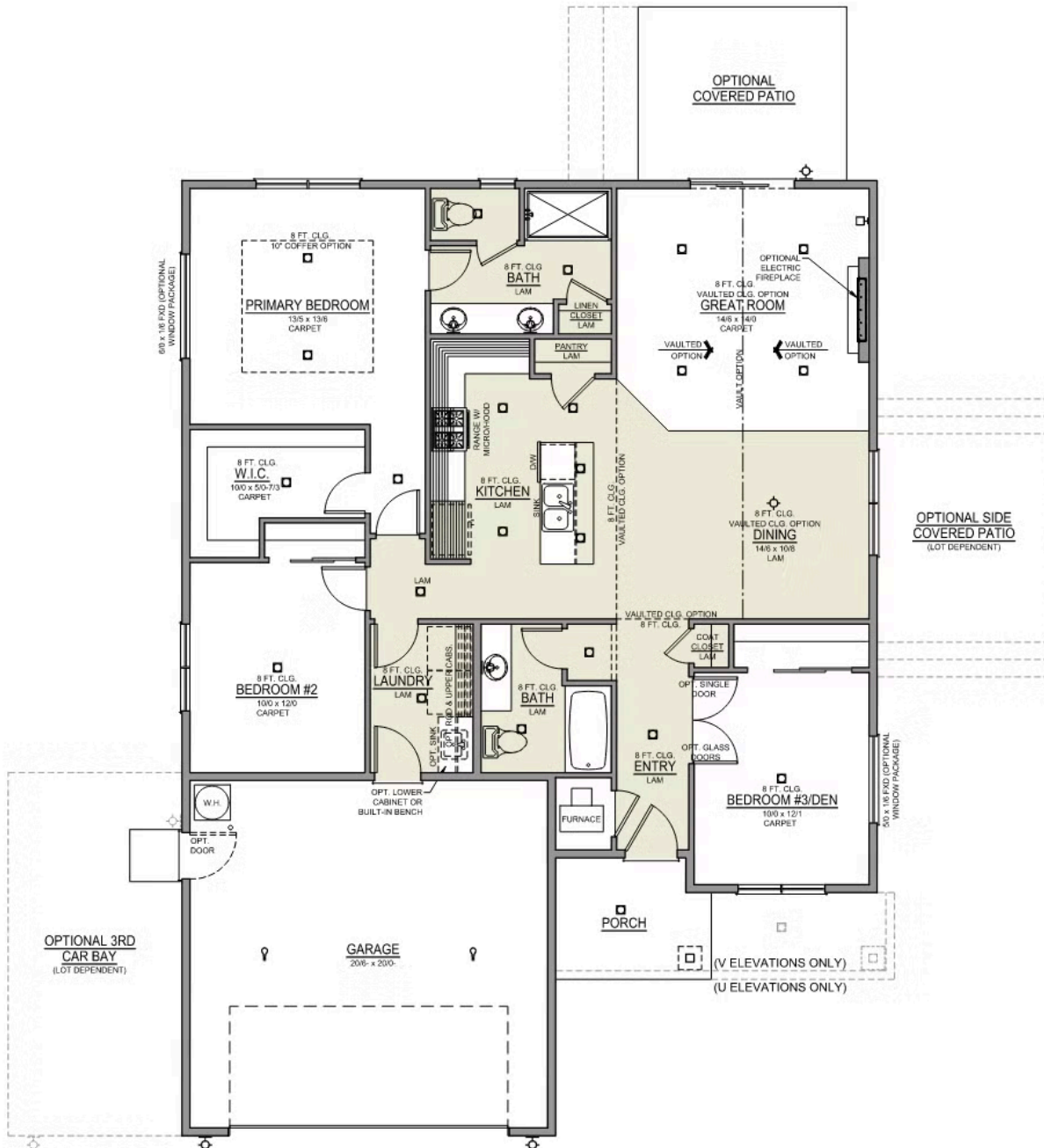
2 Car Garage

449,997

McKenzie 2-Car

1,488 Sq. Ft.

3 Bedroom, 2 Bath




 3 Bedrooms

 2 Bathrooms

 1,488 Sq. Ft.

 2 Car Garage

 449,997

- Interior Color Package: "Mountain Vogue". Comes with Stained Cabinets.
- Interior Walls/Trim: Walls - "Snowbound" , Trim - "Pure White"
- Exterior Color Package: Rustic Woods
- Light Fixtures: Acadia
- Doors: Standard Hardware. Cove knobs / Amador front door handle.
- Bathroom: Upgraded finishes in BLACK. Soaker Tub NOT included. All bathrooms. (Plumbing Fixtures, bath accessories and shower door hardware)
- Bathroom: Every Glass Shower Enclosure - Color Choice - "Clear Glass".
- Electrical: Tech Package Pre Wire - Includes Panel, 110 outlet, 1 Dual Wall Plate (Coax & Ethernet) in Great Room
- Windows Package: Optional Windows
- Ceilings: (Premier Series Only) Vault in Great Room and Coffered Ceiling in Primary Bedroom.
- Kitchen: Base House (Premier/Origin). Wall Range, 30" STAINED Cabinets (All Kitchen & Bath Cabs Stained).
- Laundry Uppers: Add 30" STAINED Upper Cabs above Washer/Dryer. (Premier/Origin Series)
- Cabinets: Specify Color of Knobs and Pulls
- Exterior: RV Parking 12' x 20' Cement Pad. Includes (up to) an additional 12'x 24' of driveway. Does not include widened approach.
- Counters: Quartz Counters and Backsplash (6") in Kitchen
- Counters: Quartz Counters and Backsplash in Guest Bath
- Counters: Quartz Counters and Backsplash in Primary Bath
- Exterior Covered Patio: Side - 12x10
- Doors: Upgrade Front Door. CRAFTSMAN with upper Clear Glass window
- Flooring: Great Room - Wood Laminate (Casita Court)
- Garage: Garage Door Opener
- Garage: Garage Door Opener Wireless Keypad
- HVAC: PreWire Only. For future Air Conditioner or Mini Split. Dedicated 220 Outlet.
- Fireplace: Electric Fireplace - Drywall Only w/ Mantle
- Fireplace: Add Shiplap to Electric Fireplace
- Landscape: Backyard Landscaping. Up to a 60-ft wide lot
- Kitchen: Farm Sink - Stainless Steel Single Bowl
REQUIRES QUARTZ COUNTERTOPS
- Kitchen or Laundry: Upgrade Faucet to Moen Arbor. SPECIFY Location(s) and Color. (Kitchen or Laundry. Black or Spot Resistant Stainless)