

# Willowbrook

McKenzie  
LOT 118

458 NW Birdie Ln. Madras, OR 97741

🏠 3 Bedrooms

🚿 2 Bathrooms

🏠 1,488 Sq. Ft.

🚗 2 Car Garage

🏷️ 399,000

UNDER CONSTRUCTION



The McKenzie is a compact, well-designed home that makes the most of its 1,488 square feet. A sizeable kitchen opens into the great room to create a connected, welcoming space for everyday living. Three bedrooms and two baths offer comfortable areas for rest, guests, or quiet routines, all within an easy-to-maintain footprint. With its practical layout and warm, approachable feel, the McKenzie supports the kind of simple, steady routines that make a home feel lived-in and loved.

MonteVista  
HOMES

541-234-8789

*In a continual effort to improve our product, MonteVista Homes reserves the right to change product design, features, materials, floor plans, specifications, prices and terms without prior notice. Square footage stated or implied are approximate. Images may be representative of future home and show what's possible not what's included. Seller is a licensed real estate broker in the State of Oregon. CCB#203709*



# Willowbrook

McKenzie  
LOT 118

458 NW Birdie Ln. Madras, OR 97741

🛏 3 Bedrooms

🚿 2 Bathrooms

🏠 1,488 Sq. Ft.

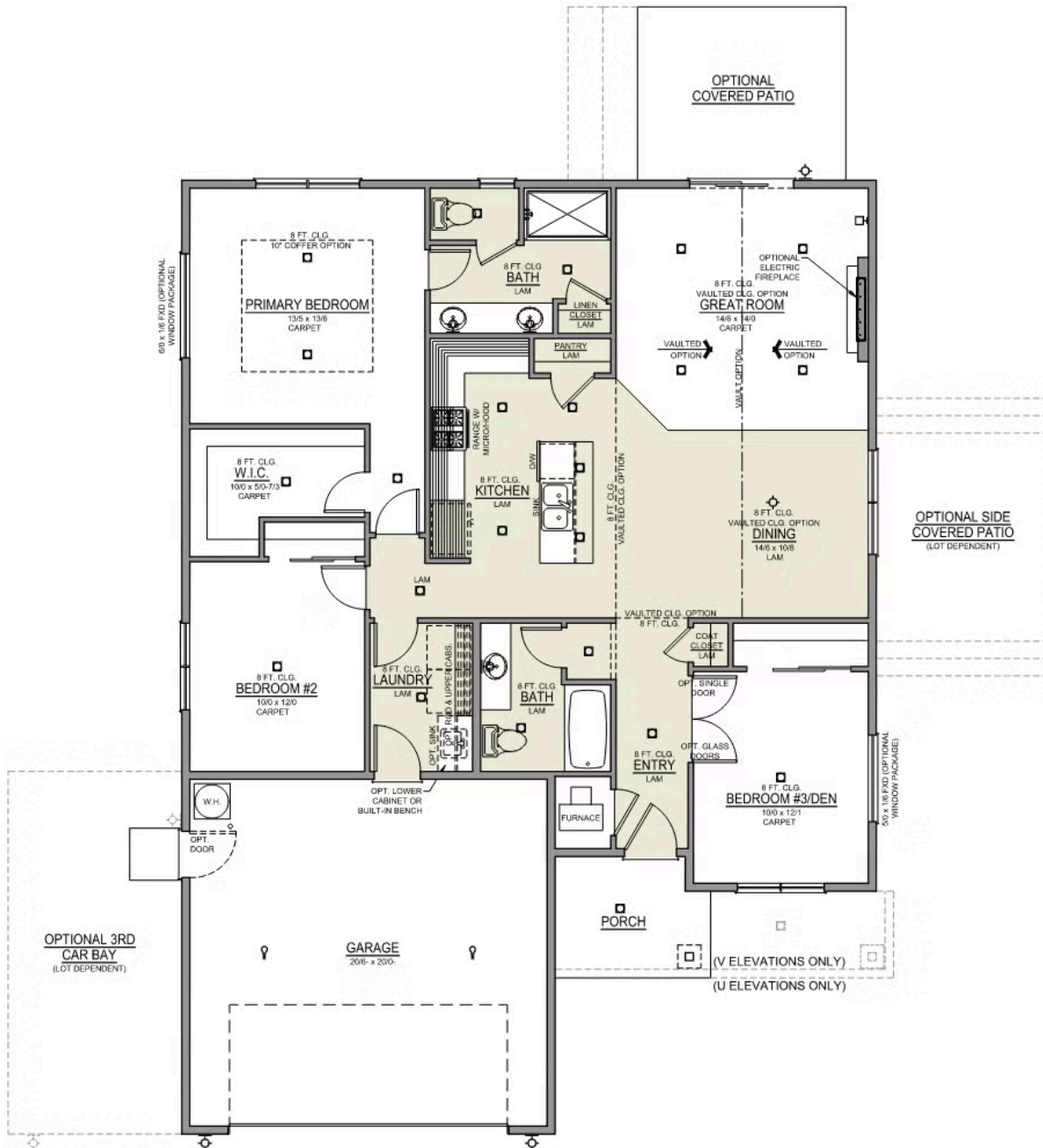
🚗 2 Car Garage

🏷 399,000

## McKenzie 2-Car

1,488 Sq. Ft.

3 Bedroom, 2 Bath




 3 Bedrooms

 2 Bathrooms

 1,488 Sq. Ft.

 2 Car Garage

 399,000

- Interior Color Package: "Horizon Pine". Includes Stained Cabinets.
- Interior Walls/Trim: Walls - "Drift of Mist" , Trim - "Pure White"
- Exterior Color Package: Deschutes Frost
- Light Fixtures: Acadia
- Doors: Standard Hardware. Cove knobs / Amador front door handle.
- Bathroom: Every Glass Shower Enclosure - Color Choice - "Clear Glass".
- Corner Lot Exterior Package: Includes Window trim on Corner Side, Flatwork and Corner Lot Landscaping up to the rear of the house.
- Electrical: Tech Package Pre Wire - Includes Panel, 110 outlet, 1 Dual Wall Plate (Coax & Ethernet) in Great Room
- Windows Package: Optional Windows
- Ceilings: (Premier Series Only) Vault in Great Room and Coffered Ceiling in Primary Bedroom.
- Kitchen: Base House (Premier/Origin). Wall Range, 30" STAINED Cabinets (All Kitchen & Bath Cabs Stained).
- Cabinets: Specify Color of Knobs and Pulls
- Counters: Quartz Counters and Backsplash (6") in Kitchen
- Counters: Quartz Counters and Backsplash in Guest Bath(s)
- Counters: Quartz Counters and Backsplash in Primary Bath
- Garage: Garage Door Opener
- Garage: Garage Door Opener Wireless Keypad
- HVAC: PreWire Only. For future Air Conditioner or Mini Split. Dedicated 220 Outlet.
- Fireplace: Electric Fireplace - Drywall Only w/ Mantle