

Willowbrook

Sycamore
LOT 142

1298 NW Fairway Rd. Madras, OR 97741

3 Bedrooms

2 Bathrooms

1,553 Sq. Ft.

2 Car Garage

455,000

UNDER CONSTRUCTION



The Sycamore delivers comfortable single-level living in a 1,553-square-foot, easy-to-maintain footprint. An open kitchen flows into the dining area and great room, creating a warm central space for gathering and everyday routines. The primary suite sits quietly at the back of the home, while two additional bedrooms offer flexibility for guests, work, or hobbies. With its inviting front porch, intuitive layout, and just-right amount of space, the Sycamore offers a relaxed, welcoming backdrop for the rhythms of daily life. Mountain and golf course views from this lot.

MonteVista
HOMES

541-234-8789

In a continual effort to improve our product, MonteVista Homes reserves the right to change product design, features, materials, floor plans, specifications, prices and terms without prior notice. Square footage stated or implied are approximate. Images may be representative of future home and show what's possible not what's included. Seller is a licensed real estate broker in the State of Oregon. CCB#203709



Willowbrook

Sycamore LOT 142

1298 NW Fairway Rd. Madras, OR 97741

3 Bedrooms

2 Bathrooms

1,553 Sq. Ft.

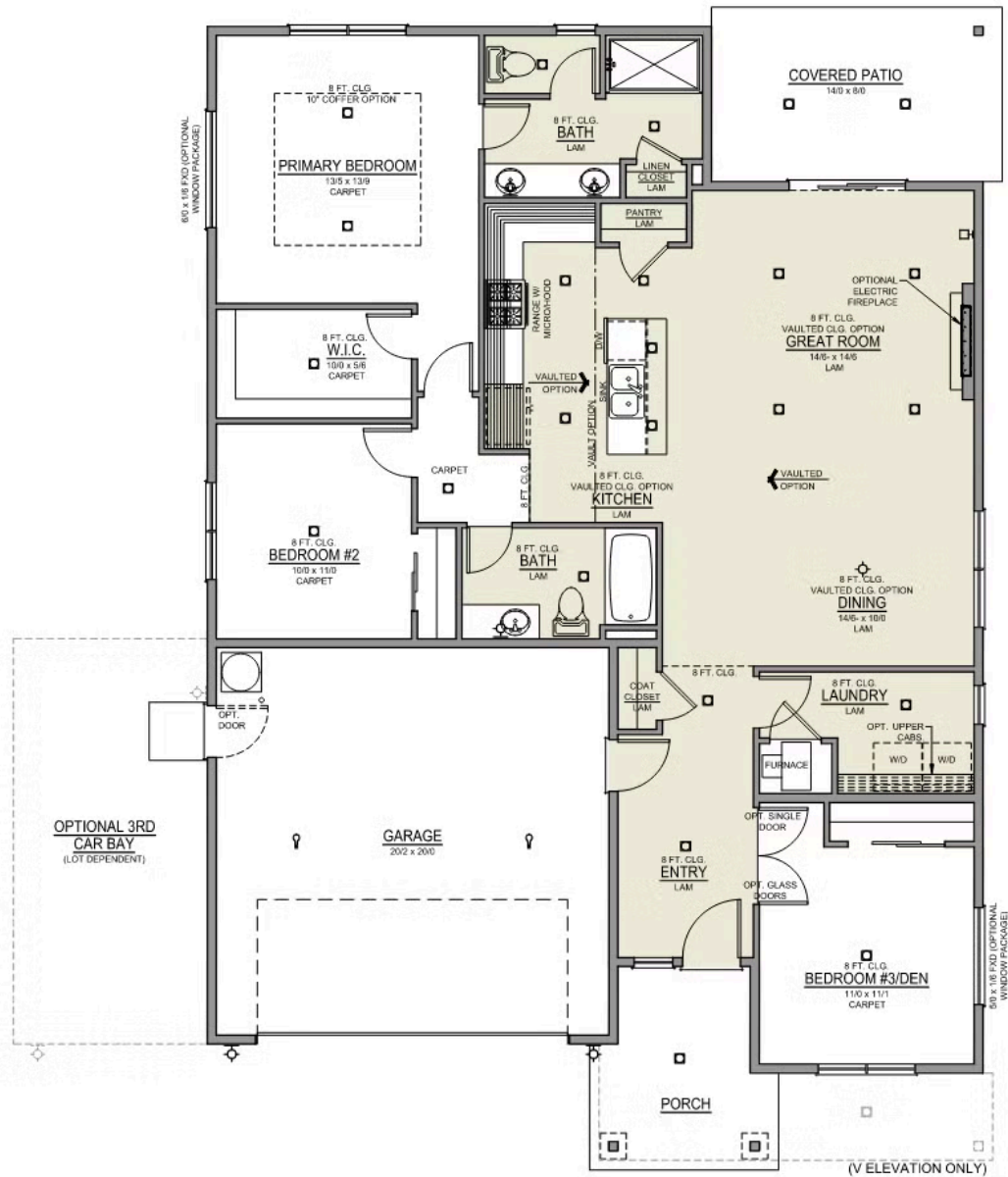
2 Car Garage

455,000

Sycamore 2-Car

1,553 Sq. Ft.

3 Bedroom, 2 Bath



 3 Bedrooms  2 Bathrooms  1,553 Sq. Ft.  2 Car Garage  455,000

- Interior Color Package: "Crystal Heights". Includes Stained Cabinets.
- Interior Walls/Trim: Walls - "Snowbound" , Trim - "Pure White"
- Exterior Color Package: Cascade Falls
- Light Fixtures: Acadia
- Doors: Standard Hardware. Cove knobs / Amador front door handle.
- Bathroom: Upgraded finishes in BLACK. Soaker Tub NOT included. All bathrooms. (Plumbing Fixtures, bath accessories and shower door hardware)
- Bathroom: Every Glass Shower Enclosure - Color Choice - "Clear Glass".
- Electrical: Tech Package Pre Wire - Includes Panel, 110 outlet, 1 Dual Wall Plate (Coax & Ethernet) in Great Room
- Windows Package: Optional Windows
- Ceilings: (Premier Series Only) Vault in Great Room and Coffered Ceiling in Primary Bedroom.
- Kitchen: Wall Range. 30" PAINTED Cabinets. All Kitchen & Bath Cabs Painted. (Premier/Origin: Upgrade Kitchen Cabs to Painted. Distinct: Not Available)
- Cabinets: Specify Color of Knobs and Pulls
- Kitchen: Full Height Tile Backsplash
- Counters: Quartz Counters and Backsplash (6") in Kitchen
- Counters: Quartz Counters and Backsplash in Guest Bath(s)
- Counters: Quartz Counters and Backsplash in Primary Bath
- Kitchen: Pendant Lights over Kitchen Island - In place of recessed LED
- Electrical: Surface Mount LEDs. Add 2 for 4 total + Dimmer switch. For Primary Bedroom (N/A for Florence).
- Electrical: Shower - Can Light
- Flooring: Hallway Down & Linen Closets - Wood Laminate (Casita Court)
- Garage: Garage Door Opener
- Garage: Garage Door Opener Wireless Keypad
- HVAC: Air Conditioner Only (Optional "PreWire" must be previously selected).
- HVAC: PreWire Only. For future Air Conditioner or Mini Split. Dedicated 220 Outlet.
- Fireplace: Electric Fireplace - Drywall Only w/ Mantle
- Fireplace: Add Shiplap to Electric Fireplace
- Landscape: Backyard Landscaping. Up to a 60-ft wide lot
- Kitchen: Farm Sink - Stainless Steel Single Bowl
REQUIRES QUARTZ COUNTERTOPS
- Kitchen or Laundry: Upgrade Faucet to Moen Arbor. SPECIFY Location(s) and Color. (Kitchen or Laundry. Black or Spot Resistant Stainless)