

3 Bedrooms

2 Bathrooms

1,725 Sq. Ft.

2 Car Garage

None

MODEL HOME



The Aspen blends thoughtful design with everyday livability in 1,725 square feet that feels both spacious and comfortable. An open kitchen and great room naturally bring people together around meals, homework, or quiet evenings by the fireplace. The spacious primary suite offers a private place to unwind at the end of the day. Two additional bedrooms provide flexibility for guests or work, and the overall flow keeps daily routines feeling simple and connected. With its practical layout and welcoming presence, the Aspen feels like home the moment you enter.

MonteVista HOMES

541-527-7075

In a continual effort to improve our product, MonteVista Homes reserves the right to change product design, features, materials, floor plans, specifications, prices and terms without prior notice. Square footage stated or implied are approximate. Images may be representative of future home and show what's possible not what's included. Seller is a licensed real estate broker in the State of Oregon. CCB#203709



3 Bedrooms

2 Bathrooms

1,725 Sq. Ft.

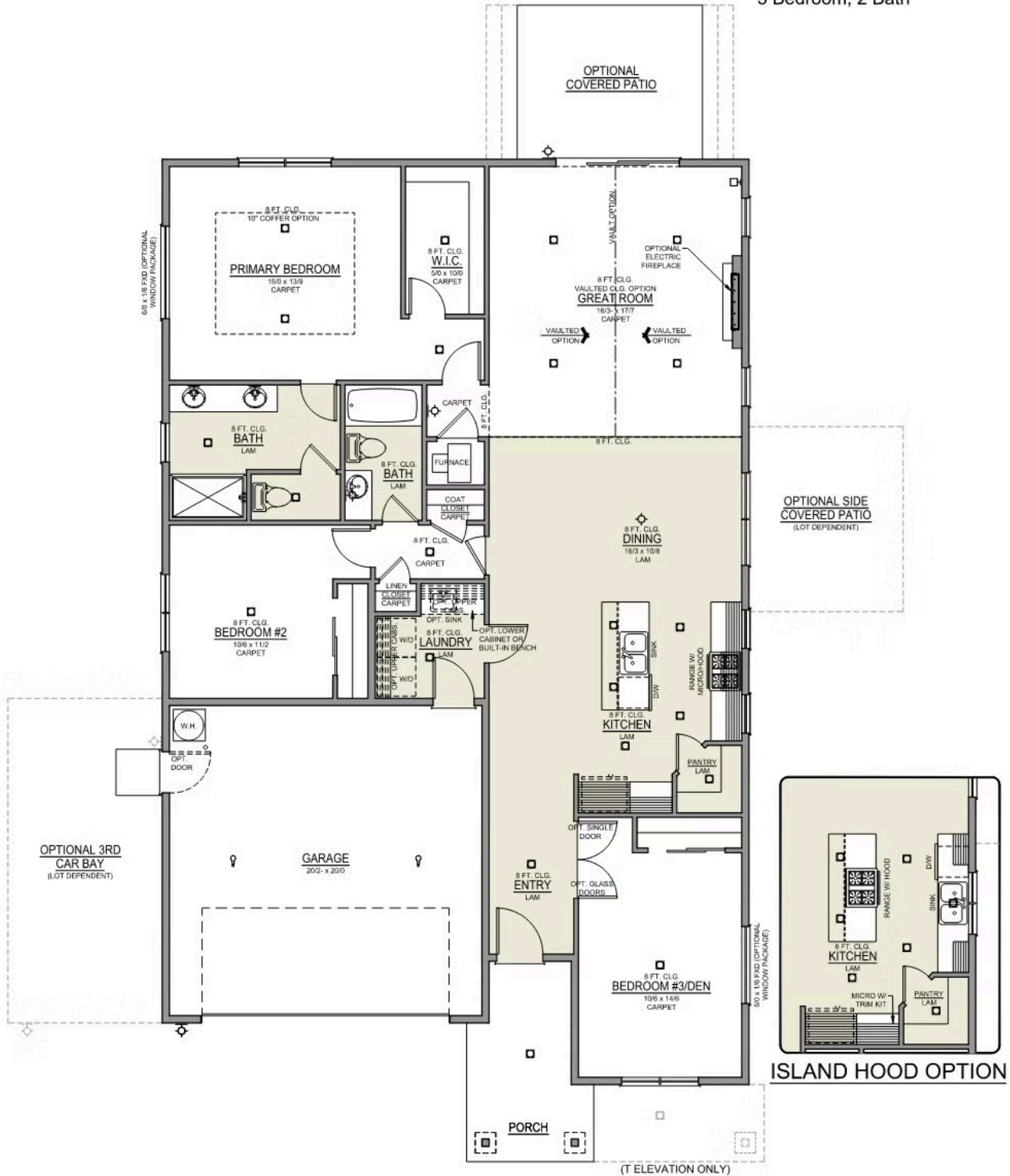
2 Car Garage

None

Aspen 2-Car

1,725 Sq. Ft.

3 Bedroom, 2 Bath



 3 Bedrooms

 2 Bathrooms

 1,725 Sq. Ft.

 2 Car Garage

 None

- Interior Color Package: "Haven Valley". Comes with Stained Cabinets.
- Interior Walls/Trim: Walls - "Snowbound" , Trim - "Pure White"
- Exterior Color Package: Chestnut
- Light Fixtures: Acadia
- Doors: Standard Hardware. Cove knobs / Amador front door handle.
- Bathroom: Every Glass Shower Enclosure - Color Choice - "Clear Glass".
- Appliances Package: Washer & Dryer (Electric)
- Electrical: Tech Package Pre Wire - Includes Panel, 110 outlet, 1 Dual Wall Plate (Coax & Ethernet) in Great Room
- Convert: Bump-Out - Front Bedroom. Upgrade whole house to 16" Eaves & Rakes. Includes Vaults & Coffers.
- Convert: Siding Enhancement - Rear Elevation
- Windows Package: Optional Windows
- Appliances: Refrigerator - Side-By-Side, Water / Ice
- Kitchen: Wall Range. 30" PAINTED Cabinets. All Kitchen & Bath Cabs Painted. (Premier/Origin: Upgrade Kitchen Cabs to Painted. Distinct: Not Available)
- Cabinets: Specify Color of Knobs and Pulls
- Counters: Quartz Counters and Backsplash (6") in Kitchen
- Counters: Quartz Counters and Backsplash in Guest Bath(s)
- Counters: Quartz Counters and Backsplash in Primary Bath
- Exterior Covered Patio: Rear - 12x10
- Fencing: Cedar, Dog-eared, 6' tall. (50 ft Min. Order)
- Fencing: 4' wide Walk Gate. Cedar, Dog-eared, 6' tall.
- Doors: Upgrade Front Door. CRAFTSMAN with upper Clear Glass window
- Garage: Garage Door Glass. Double Car Door
- Garage: Garage Door Opener
- Garage: Garage Door Opener Wireless Keypad
- HVAC: Air Conditioner Only (Optional "PreWire" must be previously selected).
- HVAC: PreWire Only. For future Air Conditioner or Mini Split. Dedicated 220 Outlet.
- HVAC: Upgrade Thermostat to "NEST".
- Fireplace: Electric Fireplace - Drywall Only w/ Mantle
- Fireplace: Add Shiplap to Electric Fireplace
- Earth Advantage Requirements
- Landscape: Backyard Landscaping. Up to a 60-ft wide lot
- Exterior: Stone on all Front Column(s)
- Exterior: Stone Garage Wing Wall
- Exterior: Stone Garage Wing Wall - Add Stone Returns
- Exterior: Window Trim Whole House
- Kitchen: Farm Sink - Stainless Steel Single Bowl
REQUIRES QUARTZ COUNTERTOPS
- Kitchen or Laundry: Upgrade Faucet to Moen Arbor. SPECIFY Location(s) and Color. (Kitchen or Laundry. Black or Spot Resistant Stainless)