

🏠 3 Bedrooms

🚿 2 Bathrooms

📏 1,917 Sq. Ft.

🚗 2 Car Garage

🏷️ 499,997

UNDER CONSTRUCTION



U - CRAFTSMAN



The Charity stands out for how it uses its 1,917 square feet to balance openness with real-life versatility. A front bedroom sits just off the entry, making it a perfect home office, schoolroom, or dedicated play space separate from the main living areas. The second bedroom connects to the hallway bath, creating a comfortable second en suite for guests. At the heart of the home, the open kitchen, dining, and great room foster natural gatherings throughout the day. With its thoughtful layout and flexible spaces, the Charity supports a range of everyday moments with ease.

🛏 3 Bedrooms

🚿 2 Bathrooms

🏠 1,917 Sq. Ft.

🚗 2 Car Garage

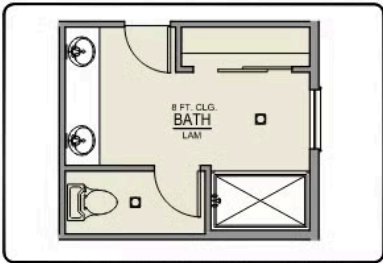
🏷 499,997

Charity 2-Car 1,917 Sq. Ft. 3 Bedroom, 2 Bath

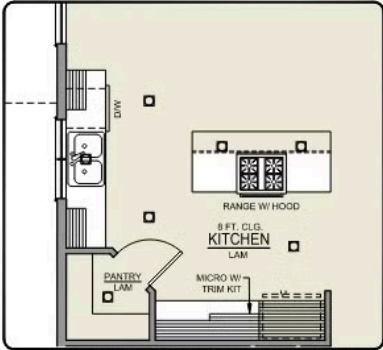


3 Bedrooms 2 Bathrooms 1,917 Sq. Ft. 2 Car Garage 499,997

Charity 2-Car
1,917 Sq. Ft.
3 Bedroom, 2 Bath



PRIMARY BATH LINEN
CLOSET OPTION



ISLAND HOOD OPTION

 3 Bedrooms

 2 Bathrooms

 1,917 Sq. Ft.

 2 Car Garage

 499,997

- Interior Color Package: "Crystal Heights". Comes with Stained Cabinets.
- Interior Walls/Trim: Walls - "Pure White" , Trim - "Drift of Mist"
- Exterior Color Package: Twilight Ridge
- Light Fixtures: Acadia
- Doors: Standard Hardware. Cove knobs / Amador front door handle.
- Bathroom: Upgraded finishes in BLACK. Soaker Tub NOT included. All bathrooms. (Plumbing Fixtures, bath accessories and shower door hardware)
- Bathroom: Every Glass Shower Enclosure - Color Choice - "Clear Glass".
- Electrical: Tech Package Pre Wire - Includes Panel, 110 outlet, 1 Dual Wall Plate (Coax & Ethernet) in Great Room
- Convert: Bump-Out - Front Bedroom. Upgrade whole house to 16" Eaves & Rakes. Includes Vaults & Coffers.
- Convert: Siding Enhancement - Rear Elevation
- Windows Package: Optional Windows
- Kitchen: Island Range/Hood. 30" PAINTED Cabinets. All Kitchen & Bath Cabs Painted. Sliding Window over the sink. (Premier/Origin Series)
- Cabinets: Specify Color of Knobs and Pulls
- Kitchen: Full Height Tile Backsplash
- Counters: Quartz Counters and Backsplash (6") in Kitchen
- Counters: Quartz Counters and Backsplash in Guest Bath(s)
- Counters: Quartz Counters and Backsplash in Primary Bath
- Exterior Covered Patio: Rear - 12x10
- Electrical: Ceiling Fan Fixture, w/ wiring. Per Room. (For rooms with 2 or 4-light configurations: See plan for applicability).
- Fencing: Cedar, Dog-eared, 6' tall. (50 ft Min. Order)
- Fencing: 4' wide Walk Gate. Cedar, Dog-eared, 6' tall.
- Doors: Upgrade Front Door. CRAFTSMAN with upper Clear Glass window
- Garage: Garage Door Glass. Double Car Door
- Garage: Garage Door Opener
- Garage: Garage Door Opener Wireless Keypad
- HVAC: Air Conditioner Only (Optional "PreWire" must be previously selected).
- HVAC: PreWire Only. For future Air Conditioner or Mini Split. Dedicated 220 Outlet.
- HVAC: Upgrade Thermostat to "NEST".
- Fireplace: Electric Fireplace - Drywall Only w/ Mantle
- Fireplace: Add Shiplap to Electric Fireplace
- Earth Advantage Requirements
- Landscape: Backyard Landscaping. Up to a 60-ft wide lot
- Exterior: Stone on all Front Column(s)
- Exterior: Stone Garage Wing Wall
- Exterior: Stone Garage Wing Wall - Add Stone Returns
- Exterior: Window Trim Whole House
- Kitchen: Farm Sink - Stainless Steel Single Bowl
REQUIRES QUARTZ COUNTERTOPS
- Kitchen or Laundry: Upgrade Faucet to Moen Arbor. SPECIFY Location(s) and Color. (Kitchen or Laundry. Black or Spot Resistant Stainless)