

3 Bedrooms 2 Bathrooms 1,830 Sq. Ft. 2 Car Garage 505,000

UNDER CONSTRUCTION



The Laurel is a beautifully designed rear-drive home that maximizes its 1,830 square feet to deliver both comfort and an effortless flow for daily life. An open-concept living area, encompassing the kitchen, dining, and great room, creates a welcoming and connected central hub perfect for family and entertaining. All three bedrooms are thoughtfully positioned to offer privacy and restful space, with a generous primary suite providing a quiet retreat. With its smart, single-level design and focus on maximizing livable space, the Laurel provides a strong, intuitive foundation for a comfortable and easy lifestyle.

MonteVista
HOMES

541-527-7075

In a continual effort to improve our product, MonteVista Homes reserves the right to change product design, features, materials, floor plans, specifications, prices and terms without prior notice. Square footage stated or implied are approximate. Images may be representative of future home and show what's possible not what's included. Seller is a licensed real estate broker in the State of Oregon. CCB#203709

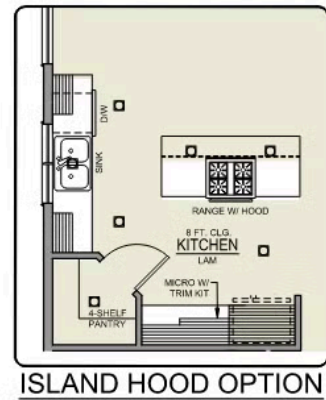
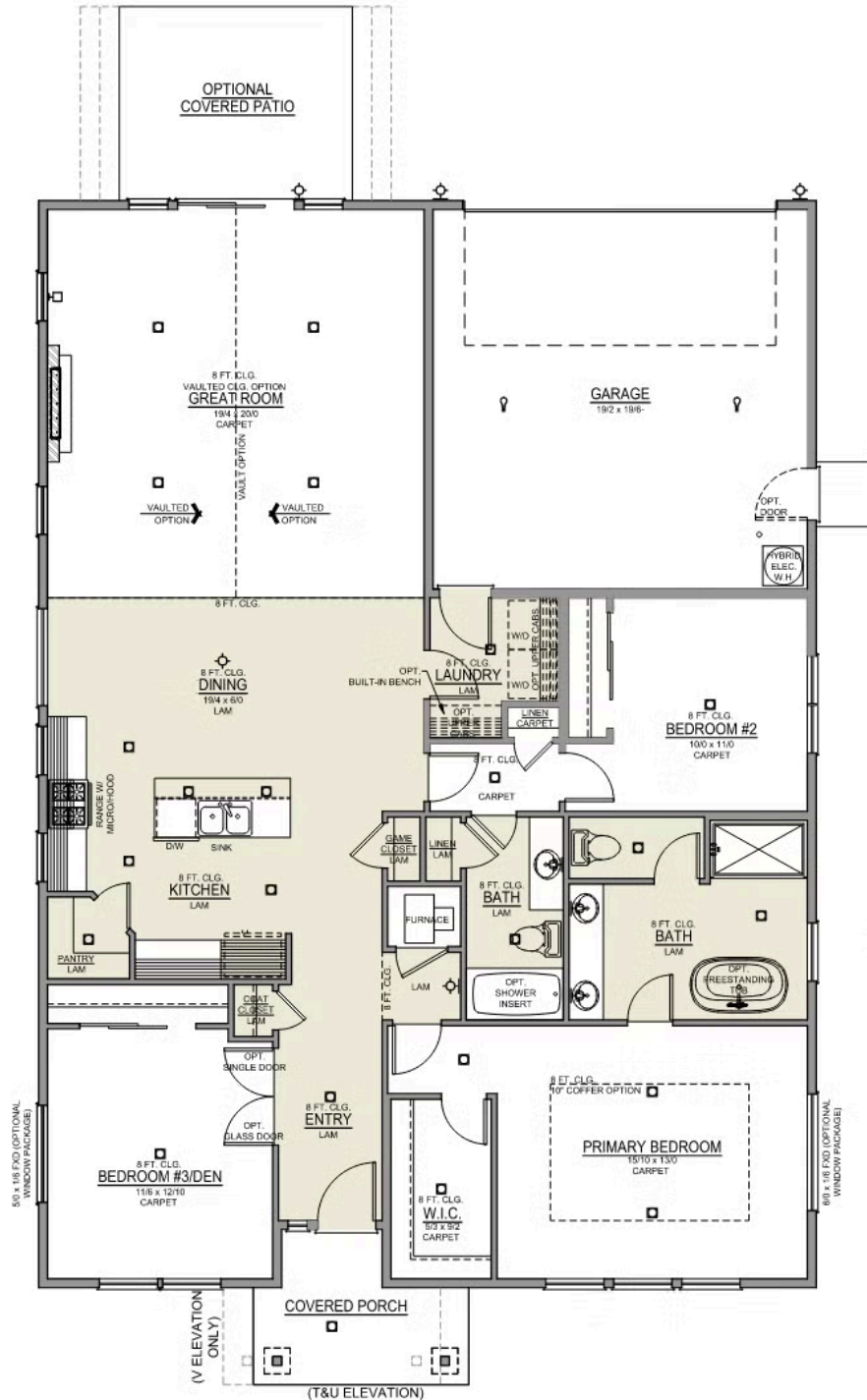


3 Bedrooms 2 Bathrooms 1,830 Sq. Ft. 2 Car Garage 505,000

Laurel Floorplan

Laurel 2-Car

1,830 Sq. Ft.
3 Bedroom, 2 Bath



 3 Bedrooms  2 Bathrooms  1,830 Sq. Ft.  2 Car Garage  505,000

- Interior Color Package: "Mountain Vogue". Includes Stained Cabinets.
- Interior Walls/Trim: Walls - "Snowbound" , Trim - "Pure White"
- Exterior Paint Color: Seaside
- Light Fixtures: Acadia
- Doors: Standard Hardware. Cove knobs / Amador front door handle.
- Bathroom: Upgraded finishes in BLACK. Soaker Tub NOT included. All bathrooms. (Plumbing Fixtures, bath accessories and shower door hardware)
- Bathroom: Every Glass Shower Enclosure - Color Choice - "Clear Glass".
- Electrical: Tech Package Pre Wire - Includes Panel, 110 outlet, 1 Dual Wall Plate (Coax & Ethernet) in Great Room
- Convert: Upgrade whole house to 16" Eaves & Rakes. Includes Vaults & Coffers.
- Convert: Siding Enhancement - Rear Elevation
- Windows Package: Optional Windows
- Kitchen: Island Range/Hood. 30" PAINTED Cabinets. All Kitchen & Bath Cabs Painted. Sliding Window over the sink. (Premier/Origin Series)
- Cabinets: Specify Color of Knobs and Pulls
- Kitchen: Full Height Tile Backsplash
- Counters: Quartz Counters and Backsplash (6") in Kitchen
- Counters: Quartz Counters and Backsplash in Guest Bath(s)
- Counters: Quartz Counters and Backsplash in Primary Bath
- Exterior Covered Patio: Rear - 12x10 w/ 16" Eaves
- Electrical: Ceiling Fan Fixture, w/ wiring. Per Room. (For rooms with 2 or 4-light configurations: See plan for applicability).
- Fencing: Add Stain - Double Sided. SW 3542 Charwood. For Cedar, Dog-eared, Fencing and/or Gates, 6' tall. Choose Qty (in LF) & Specify Location.
- Fencing: Cedar, Dog-eared, 6' tall. (50 ft Min. Order)
- Fencing: 4' wide Walk Gate. Cedar, Dog-eared, 6' tall.
- Doors: Upgrade Front Door. CRAFTSMAN with upper Clear Glass window
- Garage: Garage Door Glass. Double Car Door
- Garage: Garage Door Opener
- Garage: Garage Door Opener Wireless Keypad
- HVAC: PreWire Only. For future Air Conditioner or Mini Split. Dedicated 220 Outlet.
- HVAC: Upgrade Thermostat to "NEST".
- Fireplace: Electric Fireplace - Drywall Only w/ Mantle
- Fireplace: Add Shiplap to Electric Fireplace
- Earth Advantage Requirements
- Landscape: Backyard Landscaping. Up to a 60-ft wide lot
- Exterior: Stone on all Front Column(s)
- Exterior: Window Trim Whole House
- Kitchen: Farm Sink - Stainless Steel Single Bowl
REQUIRES QUARTZ COUNTERTOPS
- Kitchen or Laundry: Upgrade Faucet to Moen Arbor. SPECIFY Location(s) and Color. (Kitchen or Laundry. Black or Spot Resistant Stainless)