

🏠 3 Bedrooms

🚿 2 Bathrooms

📏 1,830 Sq. Ft.

🚗 2 Car Garage

🏷️ 495,000

UNDER CONSTRUCTION



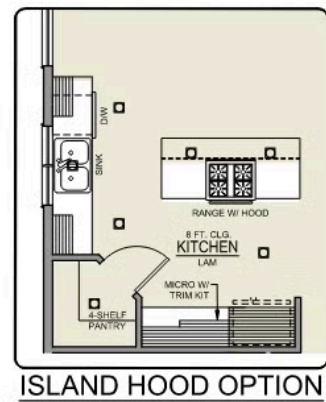
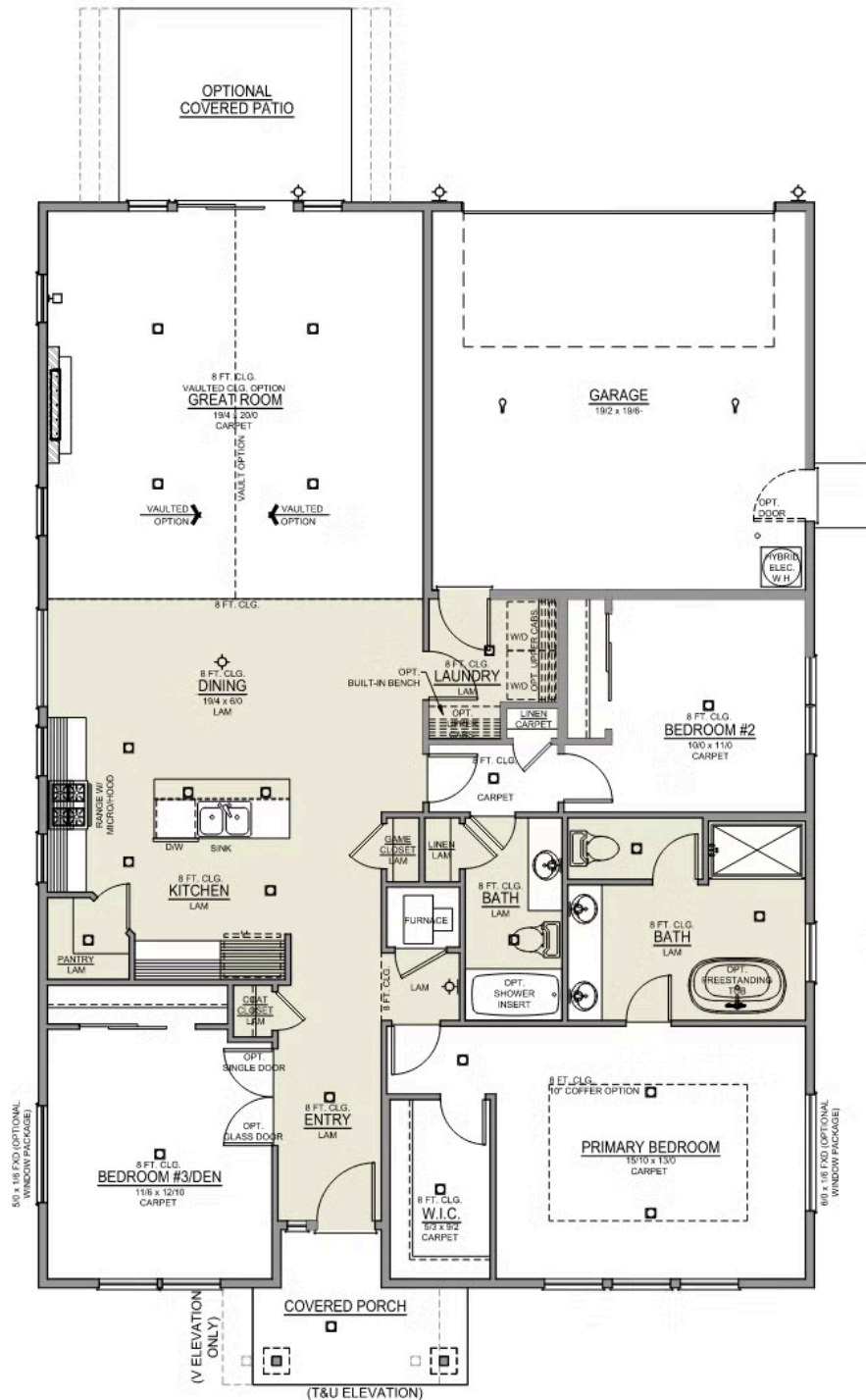
The Laurel is a beautifully designed rear-drive home that maximizes its 1,830 square feet to deliver both comfort and an effortless flow for daily life. An open-concept living area, encompassing the kitchen, dining, and great room, creates a welcoming and connected central hub perfect for family and entertaining. All three bedrooms are thoughtfully positioned to offer privacy and restful space, with a generous primary suite providing a quiet retreat. With its smart, single-level design and focus on maximizing livable space, the Laurel provides a strong, intuitive foundation for a comfortable and easy lifestyle.

🏠 3 Bedrooms
🚿 2 Bathrooms
🏠 1,830 Sq. Ft.
🚗 2 Car Garage
🏷️ 495,000

Laurel Floorplan

Laurel 2-Car

1,830 Sq. Ft.
3 Bedroom, 2 Bath



 3 Bedrooms

 2 Bathrooms

 1,830 Sq. Ft.

 2 Car Garage

 495,000

- Interior Color Package: "Granite Shoreline". Includes Stained Cabinets.
- Interior Walls/Trim: Walls - "Snowbound" , Trim - "Pure White"
- Exterior Color Package: Twilight Ridge
- Light Fixtures: Acadia
- Doors: Standard Hardware. Cove knobs / Amador front door handle.
- Bathroom: Every Glass Shower Enclosure - Color Choice - "Clear Glass".
- Electrical: Tech Package Pre Wire - Includes Panel, 110 outlet, 1 Dual Wall Plate (Coax & Ethernet) in Great Room
- Convert: Upgrade whole house to 16" Eaves & Rakes. Includes Vaults & Coffers.
- Convert: Siding Enhancement - Rear Elevation
- Windows Package: Optional Windows
- Kitchen: Island Range/Hood. 30" STAINED Cabinets. All Kitchen & Bath Cabs Stained. Sliding Window over the sink. (Premier/Origin Series)
- Cabinets: Specify Color of Knobs and Pulls
- Kitchen: Full Height Tile Backsplash
- Counters: Quartz Counters and Backsplash (6") in Kitchen
- Counters: Quartz Counters and Backsplash in Guest Bath(s)
- Counters: Quartz Counters and Backsplash in Primary Bath
- Exterior Covered Patio: Rear - 12x10 w/ 16" Eaves
- Fencing: Add Stain - Double Sided. SW 3542 Charwood. For Cedar, Dog-eared, Fencing and/or Gates, 6' tall. Choose Qty (in LF) & Specify Location.
- Fencing: Cedar, Dog-eared, 6' tall. (50 ft Min. Order)
- Fencing: 4' wide Walk Gate. Cedar, Dog-eared, 6' tall.
- Doors: Upgrade Front Door. CRAFTSMAN with upper Clear Glass window
- Garage: Garage Door Glass. Double Car Door
- Garage: Garage Door Opener
- Garage: Garage Door Opener Wireless Keypad
- HVAC: PreWire Only. For future Air Conditioner or Mini Split. Dedicated 220 Outlet.
- HVAC: Upgrade Thermostat to "NEST".
- Fireplace: Electric Fireplace - Drywall Only w/ Mantle
- Earth Advantage Requirements
- Landscape: Backyard Landscaping. Up to a 60-ft wide lot
- Exterior: Stone on all Front Column(s)
- Exterior: Window Trim Whole House
- Kitchen: Farm Sink - Stainless Steel Single Bowl
REQUIRES QUARTZ COUNTERTOPS
- Kitchen or Laundry: Upgrade Faucet to Moen Arbor. SPECIFY Location(s) and Color. (Kitchen or Laundry. Black or Spot Resistant Stainless)