

3 Bedrooms 2 Bathrooms 1,583 Sq. Ft. 2 Car Garage 459,997

UNDER CONSTRUCTION



T - TRADITIONAL ELEVATION



The Sycamore delivers comfortable single-level living in a 1,583-square-foot, easy-to-maintain footprint. An open kitchen flows into the dining area and great room, creating a warm central space for gathering and everyday routines. The primary suite sits quietly at the back of the home, while two additional bedrooms offer flexibility for guests, work, or hobbies. With its inviting front porch, intuitive layout, and just-right amount of space, the Sycamore offers a relaxed, welcoming backdrop for the rhythms of daily life.

MonteVista HOMES

541-527-7075

In a continual effort to improve our product, MonteVista Homes reserves the right to change product design, features, materials, floor plans, specifications, prices and terms without prior notice. Square footage stated or implied are approximate. Images may be representative of future home and show what's possible not what's included. Seller is a licensed real estate broker in the State of Oregon. CCB#203709



3 Bedrooms

2 Bathrooms

1,583 Sq. Ft.

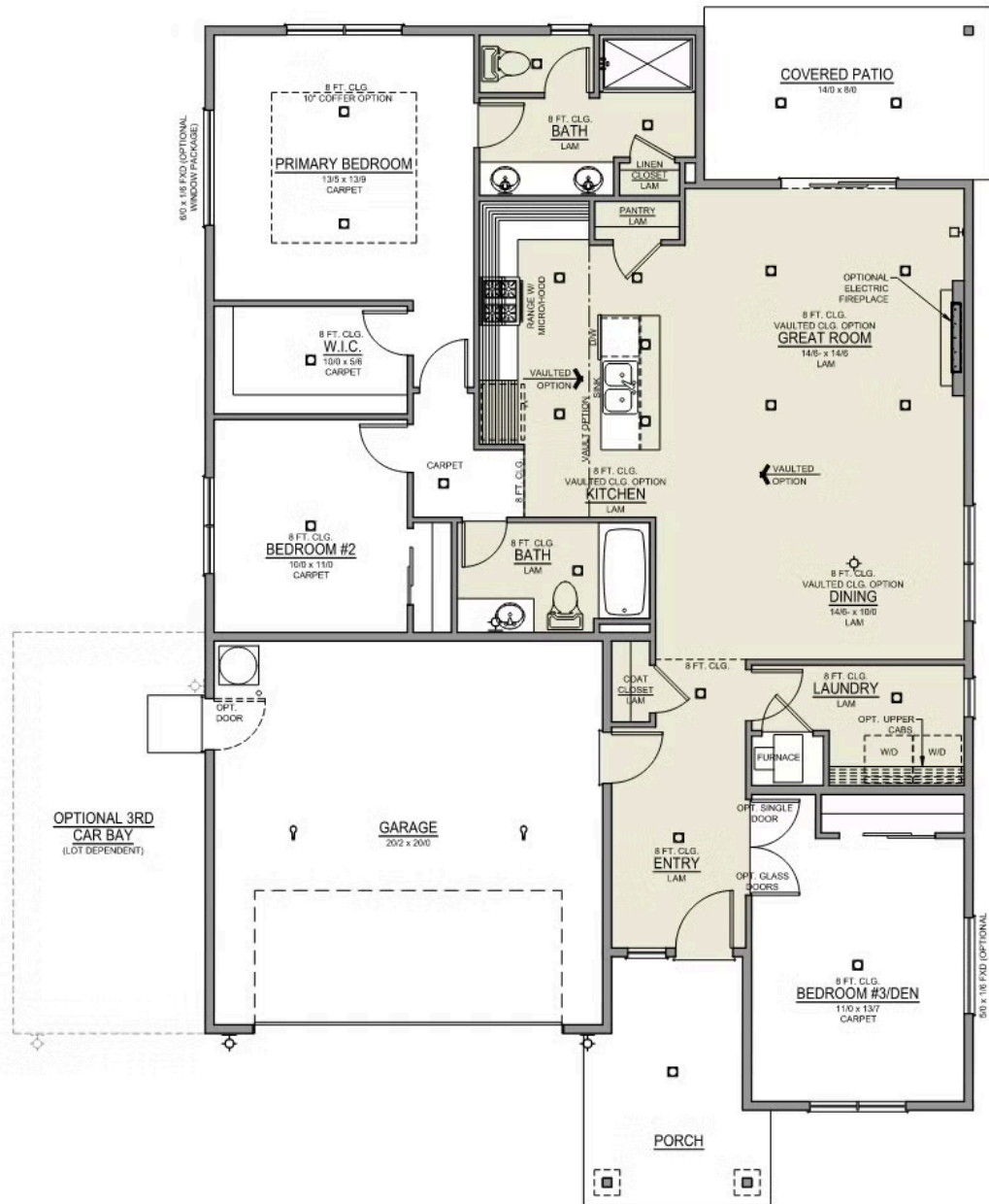
2 Car Garage

459,997

Sycamore 2-Car

1,583 Sq. Ft.

3 Bedroom, 2 Bath




 3 Bedrooms

 2 Bathrooms

 1,583 Sq. Ft.

 2 Car Garage

 459,997

- Interior Color Package: "Horizon Pine". Comes with Stained Cabinets.
- Interior Walls/Trim: Walls - "Drift of Mist", Trim - "Pure White"
- Exterior Color Package: Cascade Falls
- Light Fixtures: Acadia
- Doors: Standard Hardware. Cove knobs / Amador front door handle.
- Bathroom: Upgraded finishes in BLACK. Soaker Tub NOT included. All bathrooms. (Plumbing Fixtures, bath accessories and shower door hardware)
- Bathroom: Every Glass Shower Enclosure - Color Choice - "Clear Glass".
- Electrical: Tech Package Pre Wire - Includes Panel, 110 outlet, 1 Dual Wall Plate (Coax & Ethernet) in Great Room
- Convert: Bump-Out - Front Bedroom. Upgrade whole house to 16" Eaves & Rakes. Includes Vaults & Coffers.
- Convert: Siding Enhancement - Rear Elevation
- Windows Package: Optional Windows
- Kitchen: Wall Range. 30" PAINTED Cabinets. All Kitchen & Bath Cabs Painted. (Premier/Origin: Upgrade Kitchen Cabs to Painted. Distinct: Not Available)
- Cabinets: Specify Color of Knobs and Pulls
- Kitchen: Full Height Tile Backsplash
- Counters: Quartz Counters and Backsplash (6") in Kitchen
- Counters: Quartz Counters and Backsplash in Guest Bath(s)
- Counters: Quartz Counters and Backsplash in Primary Bath
- Electrical: Ceiling Fan Fixture, w/ wiring. Per Room. (For rooms with 2 or 4-light configurations: See plan for applicability).
- Kitchen: Pendant Lights over Kitchen Island - In place of recessed LED
- Fencing: Cedar, Dog-eared, 6' tall. (50 ft Min. Order)
- Fencing: 4' wide Walk Gate. Cedar, Dog-eared, 6' tall.
- Doors: Upgrade Front Door. CRAFTSMAN with upper Clear Glass window
- Garage: Garage Door Glass. Double Car Door
- Garage: Garage Door Opener
- Garage: Garage Door Opener Wireless Keypad
- HVAC: Air Conditioner Only (Optional "PreWire" must be previously selected).
- HVAC: PreWire Only. For future Air Conditioner or Mini Split. Dedicated 220 Outlet.
- HVAC: Upgrade Thermostat to "NEST".
- Fireplace: Electric Fireplace - Drywall Only w/ Mantle
- Fireplace: Add Shiplap to Electric Fireplace
- Earth Advantage Requirements
- Landscape: Backyard Landscaping. Up to a 60-ft wide lot
- Exterior: Stone on all Front Column(s)
- Exterior: Stone Garage Wing Wall
- Exterior: Stone Garage Wing Wall - Add Stone Returns
- Exterior: Window Trim Whole House
- Kitchen: Farm Sink - Stainless Steel Single Bowl
REQUIRES QUARTZ COUNTERTOPS
- Kitchen or Laundry: Upgrade Faucet to Moen Arbor. SPECIFY Location(s) and Color. (Kitchen or Laundry. Black or Spot Resistant Stainless)