






Canyon Trails

Aspen Premier
LOT 53

3360 NW 12th St. Redmond, OR 97756

 3 Bedrooms  2 Bathrooms  1,702 Sq. Ft.  2 Car Garage  539,900

UNDER CONSTRUCTION



T - TRADITIONAL



- Quartz Countertops throughout Home
- Stainless Steel Appliances
- Kitchen Island with Sink
- Corner Kitchen Pantry

- Great Room with Fireplace
- Primary Suite with Walk-in Closet
- Laundry/Mud Room Access from garage

MonteVista
HOMES

541-640-5225

In a continual effort to improve our product, MonteVista Homes reserves the right to change product design, features, materials, floor plans, specifications, prices and terms without prior notice. Square footage stated or implied are approximate. Images may be representative of future home and show what's possible not what's included. Seller is a licensed real estate broker in the State of Oregon. CCB#203709



Canyon Trails

Aspen Premier
LOT 53

3360 NW 12th St. Redmond, OR 97756

3 Bedrooms

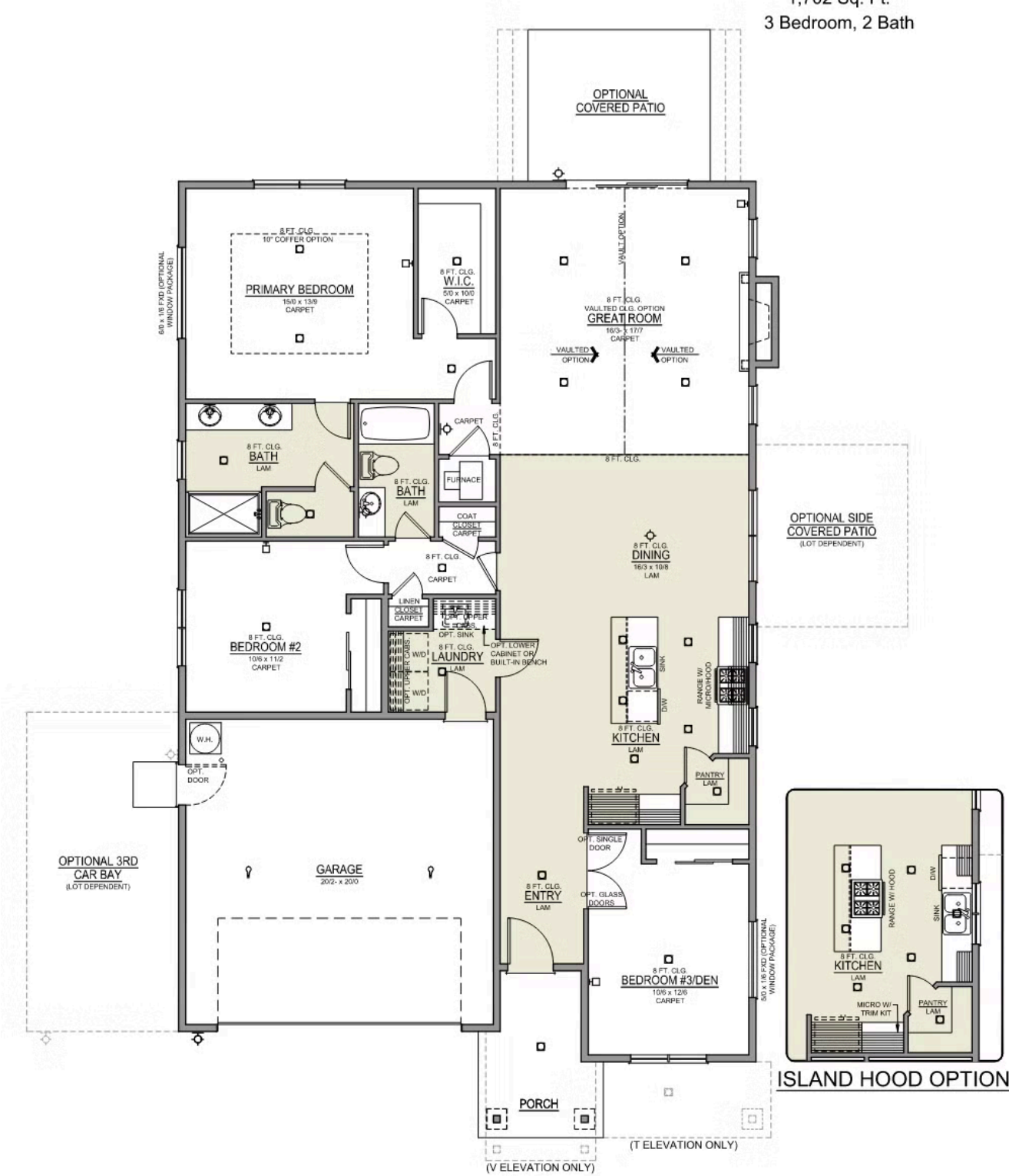
2 Bathrooms

1,702 Sq. Ft.

2 Car Garage

539,900

Aspen 2-Car
1,702 Sq. Ft.
3 Bedroom, 2 Bath




Canyon Trails

OPTIONS

Aspen Premier
LOT 53

3360 NW 12th St. Redmond, OR 97756

 3 Bedrooms  2 Bathrooms  1,702 Sq. Ft.  2 Car Garage  539,900

- Interior Color Package: "Granite Shoreline". Painted Cabinets (All cabinets in house MUST be selected as "PAINTED")
- Exterior Color Package: Deschutes Frost
- Light Fixtures: Acadia
- Doors: Hardware Standard. "Cove" knobs / "Amador" front door handle.
- Bathroom: Upgraded finishes in BLACK. Soaker Tub NOT included. All bathrooms. (Plumbing Fixtures, bath accessories and shower door hardware)
- Bathroom: Shower Enclosure(s) Glass Color Choice
- Corner Lot Exterior Package: Includes Window trim on Corner Side, Flatwork and Corner Lot Landscaping
- Electrical: Tech Package Pre Wire - Includes Panel, 110 outlet, 1 Dual Wall Plate (Coax & Ethernet) in Great Room
- Ceilings: (Premier Series Only) Vault in Great Room and Coffered Ceiling in Primary Bedroom.
- Kitchen: Island Range and Hood. 30" Cabinets. PAINTED Kitchen & Bathroom Cabinets. Sliding Window over the sink.
- Laundry Room: Add Lower PAINTED Cabs. With Quartz Top and Backsplash.
- Cabinets: Specify Color of Knobs and Pulls
- Counters: Quartz Counters and Backsplash in Kitchen
- Counters: Quartz Counters and Backsplash in Guest Bath
- Counters: Quartz Counters and Backsplash in Primary Bath
- Exterior Covered Patio: Rear - 12x10
- Electrical: Recessed LEDs. Add 2 for 4 total+ Dimmer in Primary Bedroom.
- Flooring: Hallway Down - Wood Laminate (Casita Court)
- Garage: Garage Door Opener
- Garage: Garage Door Opener Wireless Keypad
- HVAC: Air Conditioner Only (Optional "PreWire" must be previously selected).
- HVAC: Air Conditioner PreWire. Dedicated 220 Outlet (For AC or MiniSplit)
- Fireplace: Gas Fireplace (Direct Vent) with Mantel and Stone Surround
- Landscape: Backyard Landscaping. Up to a 60-ft wide lot
- Kitchen: Farm Sink - Stainless Steel Single Bowl
REQUIRES QUARTZ COUNTERTOPS
- Kitchen or Laundry Sink: Upgrade Faucet to Moen Arbor. SPECIFY Location(s) and Color (Kitchen or Laundry, and Black or Spot Resistant Stainless).

MonteVista
HOMES

541-640-5225

In a continual effort to improve our product, MonteVista Homes reserves the right to change product design, features, materials, floor plans, specifications, prices and terms without prior notice. Square footage stated or implied are approximate. Images may be representative of future home and show what's possible not what's included. Seller is a licensed real estate broker in the State of Oregon. CCB#203709

