

Canyon Trails

Charity Premier
LOT 43

3465 NW 12th St. Redmond, OR 97756

 3 Bedrooms  2 Bathrooms  1,892 Sq. Ft.  3 Car Garage  579,900

MOVE-IN READY



T- TRADITIONAL - 3 CAR



- Quartz Countertops throughout the home
- Free-Standing Soaking Tub
- Office, Study, or School Room
- Great Room with Fireplace

- Corner Kitchen Pantry
- Laundry/Mud room access from Garage
- Smart Home Ready

MonteVista
HOMES

541-640-5225

In a continual effort to improve our product, MonteVista Homes reserves the right to change product design, features, materials, floor plans, specifications, prices and terms without prior notice. Square footage stated or implied are approximate. Images may be representative of future home and show what's possible not what's included. Seller is a licensed real estate broker in the State of Oregon. CCB#203709




Canyon Trails

Charity Premier
LOT 43

3465 NW 12th St. Redmond, OR 97756

 3 Bedrooms

 2 Bathrooms

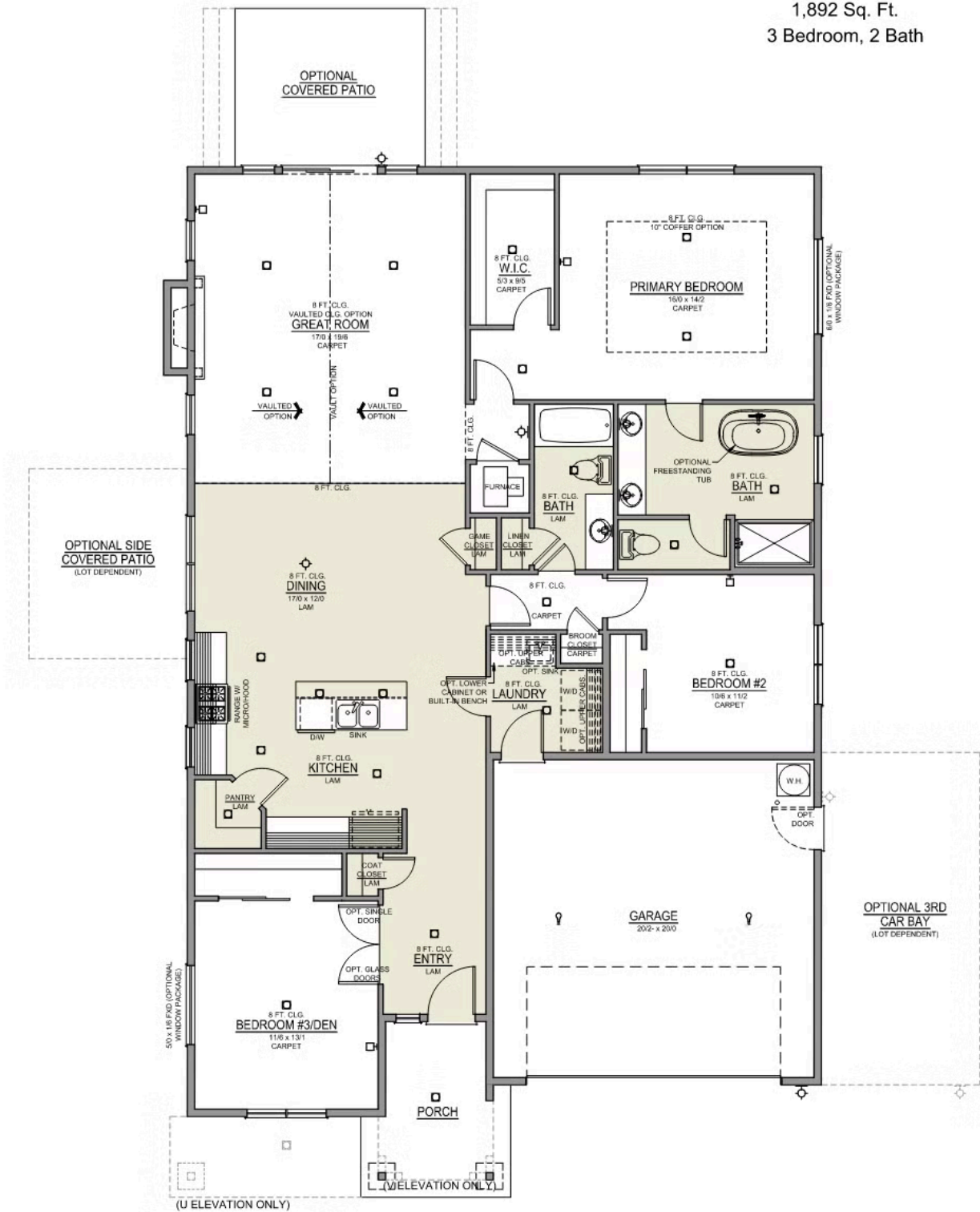
 1,892 Sq. Ft.

 3 Car Garage

 579,900

Charity 2-Car

1,892 Sq. Ft.
3 Bedroom, 2 Bath



Canyon Trails

Charity Premier
LOT 43

3465 NW 12th St. Redmond, OR 97756

 3 Bedrooms

 2 Bathrooms

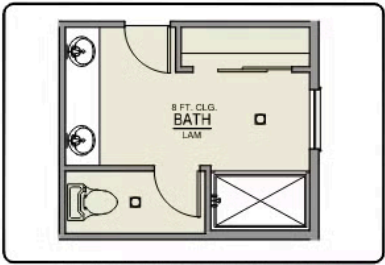
 1,892 Sq. Ft.

 3 Car Garage

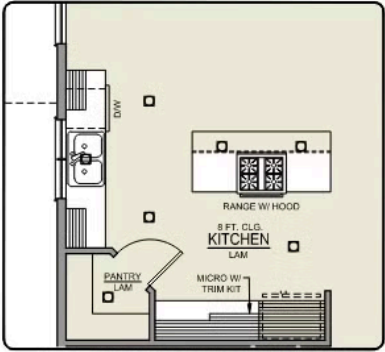
 579,900

Charity 2-Car

1,892 Sq. Ft.
3 Bedroom, 2 Bath



PRIMARY BATH LINEN
CLOSET OPTION



ISLAND HOOD OPTION

Canyon Trails

OPTIONS

Charity Premier
LOT 43

3465 NW 12th St. Redmond, OR 97756

 3 Bedrooms  2 Bathrooms  1,892 Sq. Ft.  3 Car Garage  579,900

- Interior Color Package: "Urban Oasis"
- Exterior Color Package: Timberline Meadows
- Light Fixtures: Acadia
- Doors: Hardware Standard. "Cove" knobs / "Amador" front door handle.
- Bathroom: Upgrade finishes to NICKEL - All bathrooms. Soaker Tub INCLUDED. (Plumbing Fixtures, bath accessories and shower door hardware)
- Bathroom: Shower Enclosure Glass Color Choice
- Electrical Package: Tech Package Pre Wire - Includes Panel, 110 outlet, 1 Dual Wall Plate (Coax & Ethernet) in Great Room
- Garage: Upgrade Package. Adds 3rd-Car Garage*, Man Door, 2 Openers w/ Keypads, and Wall Insulation (Garage Doors already insulated).
- Windows Package: Optional Windows
- Ceilings: Vault in Great Room and Coffered Ceiling in Primary Bedroom
- Kitchen: Island Range and Hood. 30" Cabinets. Sliding Window over the sink.
- Laundry Room: Upper Cabinets: 36"
- Cabinets: Knobs and Pulls
- Kitchen: Full Height Backsplash
- Exterior Covered Patio: Rear - 14x10
- Electrical: Recessed LEDs. Add 2 for 4 total+ Dimmer in Primary Bedroom.
- Doors Package: Add Optional 6/8 Interior Doors (Premier Series Only)
- Doors: Kitchen Pantry Door w/ Glass. Frosted & Border.
- Flooring: Great Room - Wood Laminate (Casita Court)
- Flooring: Hallway Down - Wood Laminate (Casita Court)
- HVAC: Air Conditioner Only (Optional "PreWire" must be previously selected).
- HVAC: Air Conditioner PreWire (Dedicated 220 Outlet)
- Fireplace: (Direct Vent) with Mantel and Stone Surround
- Landscape: Backyard Landscaping. Up to a 60-ft wide lot
- Exterior: Stone on all Front Column(s)
- Exterior: Stone Garage Wing Wall
- Exterior: Stone Garage Wing Wall - For additional Garage Bay
- Kitchen or Laundry Sink: Upgrade Faucet to Moen Arbor - Specify Color, Quantity and Location(s)
- Bathroom: Freestanding Soaker Tub

MonteVista
HOMES

541-640-5225

In a continual effort to improve our product, MonteVista Homes reserves the right to change product design, features, materials, floor plans, specifications, prices and terms without prior notice. Square footage stated or implied are approximate. Images may be representative of future home and show what's possible not what's included. Seller is a licensed real estate broker in the State of Oregon. CCB#203709

