

Canyon Trails

Hope Premier
LOT 41

3421 NW 12th St. Redmond, OR 97756

 4 Bedrooms  2 Bathrooms  1,906 Sq. Ft.  3 Car Garage  589,900

MOVE-IN READY



T - TRADITIONAL



- Kitchen Island with Sink
- Kitchen Pantry
- Great Room with Fireplace
- Quartz Countertops throughout Home

- Free Standing Tub
- Primary Bedroom with Walk-in Closet
- Stainless Steel Appliances

MonteVista
HOMES

541-640-5225

In a continual effort to improve our product, MonteVista Homes reserves the right to change product design, features, materials, floor plans, specifications, prices and terms without prior notice. Square footage stated or implied are approximate. Images may be representative of future home and show what's possible not what's included. Seller is a licensed real estate broker in the State of Oregon. CCB#203709



Canyon Trails

Hope Premier
LOT 41

3421 NW 12th St. Redmond, OR 97756

4 Bedrooms

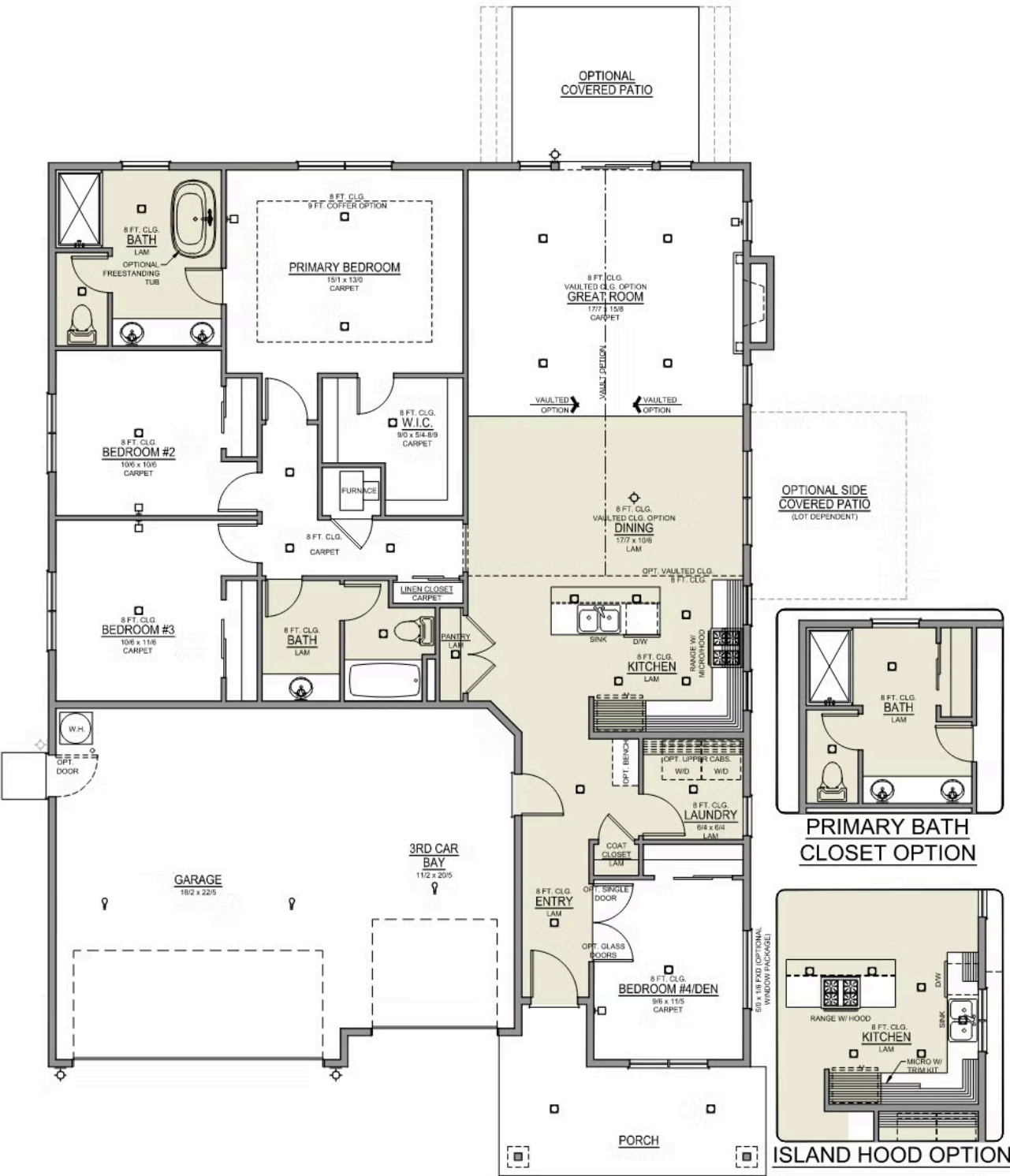
2 Bathrooms

1,906 Sq. Ft.

3 Car Garage

589,900

Hope 3-Car
1,906 Sq. Ft.
4 Bedroom, 2 Bath





Canyon Trails

OPTIONS

Hope Premier
LOT 41

3421 NW 12th St. Redmond, OR 97756

 4 Bedrooms  2 Bathrooms  1,906 Sq. Ft.  3 Car Garage  589,900

- Interior Color Package: "Mountain Vogue". Painted Cabinets (All cabinets in house MUST be selected as "PAINTED")
- Exterior Color Package: Spring Mist
- Light Fixtures: Acadia
- Doors: Hardware Standard. "Cove" knobs / "Amador" front door handle.
- Bathroom: Shower Enclosure(s) Glass Color Choice
- Electrical: Tech Package Pre Wire - Includes Panel, 110 outlet, 1 Dual Wall Plate (Coax & Ethernet) in Great Room
- Windows Package: Optional Windows
- Ceilings: (Premier Series Only) Vault in Great Room and Coffered Ceiling in Primary Bedroom.
- Laundry Room: Add Upper PAINTED 36" Cabinets above Washer/Dryer.
- Kitchen: 36" Cabinets.
- Cabinets: Color of Knobs and Pulls
- Counters: Quartz Counters and Backsplash in Kitchen
- Counters: Quartz Counters and Backsplash in Guest Bath
- Counters: Quartz Counters and Backsplash in Primary Bath
- Exterior Covered Patio: Rear - 12x10
- Kitchen: Pendant Lights over Kitchen Island - In place of recessed LED
- Electrical: Recessed LEDs. Add 2 for 4 total+ Dimmer in Primary Bedroom.
- Electrical: Shower - Can Light
- Bathroom: Linen Closet in Master Bath
- Garage: Man Door (Exterior door from garage to outside). Includes exterior coach light. 6'-8" 2-Panel.
- Garage: Garage Door Opener
- Garage: Garage Door Opener Wireless Keypad
- HVAC: Air Conditioner Only (Optional "PreWire" must be previously selected).
- HVAC: Air Conditioner PreWire. Dedicated 220 Outlet (For AC or MiniSplit)
- Fireplace: Gas Fireplace (Direct Vent) with Mantel and Stone Surround
- Landscape: Backyard Landscaping. Up to a 60-ft wide lot
- Exterior: Stone on all Front Column(s)
- Exterior: Stone Garage Wing Wall
- Kitchen: Farm Sink - Stainless Steel Single Bowl
REQUIRES QUARTZ COUNTERTOPS
- Kitchen or Laundry Sink: Upgrade Faucet to Moen Arbor - Specify Color (Black or SRS), Quantity and Location(s)

MonteVista
HOMES

541-640-5225

In a continual effort to improve our product, MonteVista Homes reserves the right to change product design, features, materials, floor plans, specifications, prices and terms without prior notice. Square footage stated or implied are approximate. Images may be representative of future home and show what's possible not what's included. Seller is a licensed real estate broker in the State of Oregon. CCB#203709

