

Canyon Trails

McKenzie Premier
LOT 38

3355 NW 12th St. Redmond, OR 97756

 3 Bedrooms  2 Bathrooms  1,488 Sq. Ft.  2 Car Garage  512,900

UNDER CONSTRUCTION



U - CRAFTSMAN 2 CAR



- Kitchen Island with Sink
- Kitchen Pantry
- Great Room with Fireplace
- Primary Suite with Walk-in Closet
- Quartz Countertops throughout Home
- Stainless Steel Appliances

MonteVista
HOMES

541-640-5225

In a continual effort to improve our product, MonteVista Homes reserves the right to change product design, features, materials, floor plans, specifications, prices and terms without prior notice. Square footage stated or implied are approximate. Images may be representative of future home and show what's possible not what's included. Seller is a licensed real estate broker in the State of Oregon. CCB#203709



Canyon Trails

McKenzie Premier
LOT 38

3355 NW 12th St. Redmond, OR 97756

 3 Bedrooms

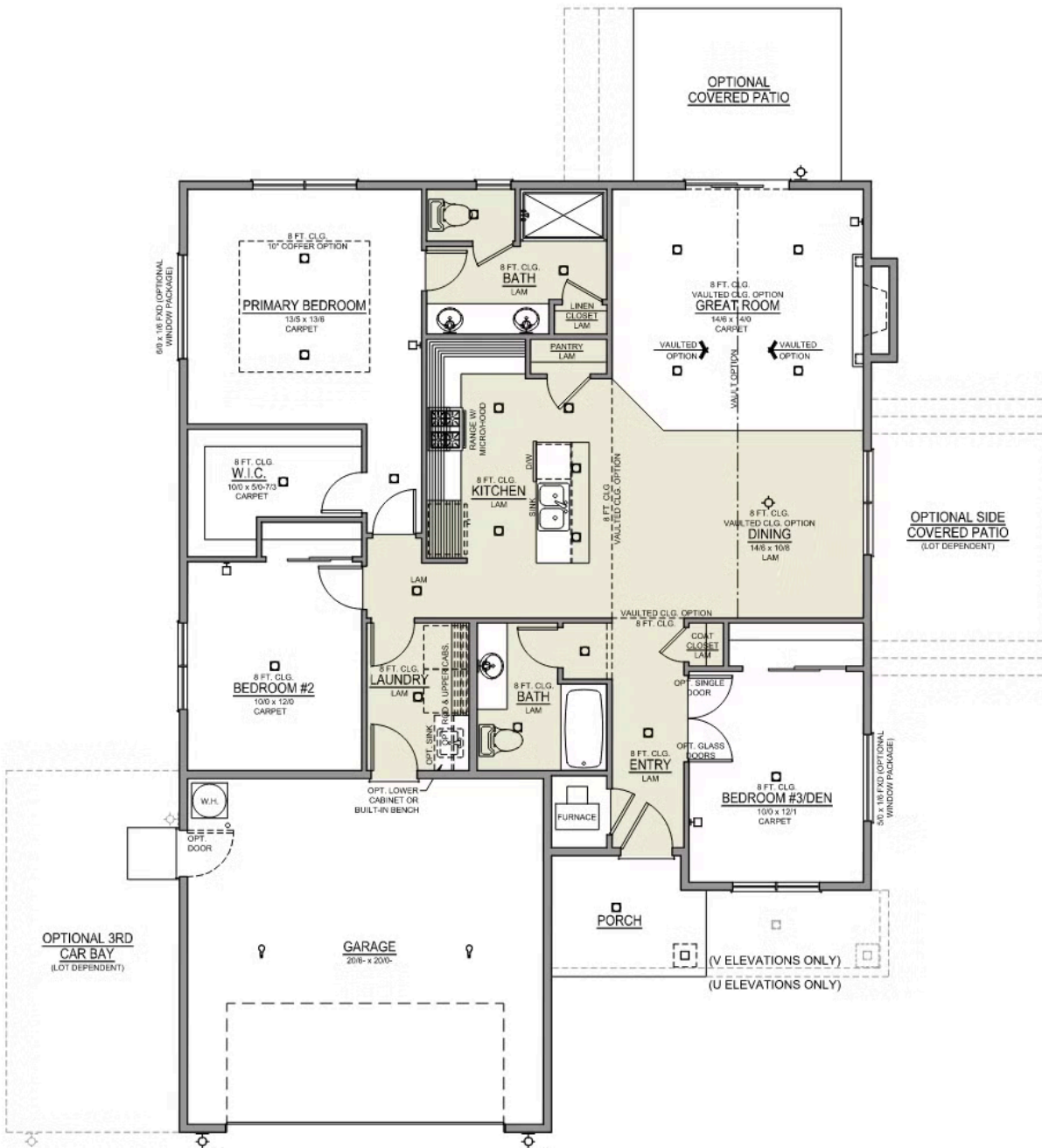
 2 Bathrooms

 1,488 Sq. Ft.

 2 Car Garage

 512,900

McKenzie 2-Car
1,488 Sq. Ft.
3 Bedroom, 2 Bath



Canyon Trails

OPTIONS

McKenzie Premier
LOT 38

3355 NW 12th St. Redmond, OR 97756

 3 Bedrooms  2 Bathrooms  1,488 Sq. Ft.  2 Car Garage  512,900

- Interior Color Package: "Crystal Heights". Painted Cabinets (All cabinets in house MUST be selected as "PAINTED")
- Exterior Color Package: Timberline Meadows
- Light Fixtures: Acadia
- Doors: Hardware Standard. "Cove" knobs / "Amador" front door handle.
- Bathroom: Shower Enclosure(s) Glass Color Choice
- Electrical: Tech Package Pre Wire - Includes Panel, 110 outlet, 1 Dual Wall Plate (Coax & Ethernet) in Great Room
- Ceilings: (Premier Series Only) Vault in Great Room and Coffered Ceiling in Primary Bedroom.
- Kitchen: 30" Cabinets. PAINTED Kitchen & Bathroom Cabinets.
- Cabinets: Specify Color of Knobs and Pulls
- Kitchen: Full Height Tile Backsplash
- Counters: Quartz Counters and Backsplash in Kitchen
- Counters: Quartz Counters and Backsplash in Guest Bath
- Counters: Quartz Counters and Backsplash in Primary Bath
- Kitchen: Pendant Lights over Kitchen Island - In place of recessed LED
- Electrical: Recessed LEDs. Add 2 for 4 total+ Dimmer in Primary Bedroom.
- Garage: Man Door (Exterior door from garage to outside). Includes: Exterior coach light, 6'-8" 2-Panel door, and 3'x3' concrete landing.
- Garage: Garage Door Opener
- Garage: Garage Door Opener Wireless Keypad
- HVAC: Air Conditioner PreWire. Dedicated 220 Outlet (For AC or Mini Split)
- Fireplace: Gas Fireplace (Direct Vent) with Mantel and Stone Surround
- Exterior: Stone on all Front Column(s)
- Exterior: Stone Garage Wing Wall
- Kitchen: Farm Sink - Stainless Steel Single Bowl
REQUIRES QUARTZ COUNTERTOPS
- Kitchen or Laundry Sink: Upgrade Faucet to Moen Arbor. SPECIFY Location(s) and Color (Kitchen or Laundry, and Black or Spot Resistant Stainless).

MonteVista
HOMES

541-640-5225

In a continual effort to improve our product, MonteVista Homes reserves the right to change product design, features, materials, floor plans, specifications, prices and terms without prior notice. Square footage stated or implied are approximate. Images may be representative of future home and show what's possible not what's included. Seller is a licensed real estate broker in the State of Oregon. CCB#203709

