

Canyon Trails

McKenzie Premier
LOT 34

1178 NW Varnish Ln. Redmond, OR 97756

3 Bedrooms 2 Bathrooms 1,488 Sq. Ft. 2 Car Garage 499,900

UNDER CONSTRUCTION



V - FARMHOUSE - 2-CAR



- Guest Suite or Den on Main Level
- 9 Foot Ceilings on Main Level
- Kitchen Island with Sink
- Corner Pantry

- Great Room with Fireplace
- Primary Suite with Walk-in Closet
- Quartz Countertops throughout Home
- Stainless Steel Appliances

MonteVista
HOMES

541-640-5225

In a continual effort to improve our product, MonteVista Homes reserves the right to change product design, features, materials, floor plans, specifications, prices and terms without prior notice. Square footage stated or implied are approximate. Images may be representative of future home and show what's possible not what's included. Seller is a licensed real estate broker in the State of Oregon. CCB#203709



Canyon Trails

McKenzie Premier
LOT 34

1178 NW Varnish Ln. Redmond, OR 97756

3 Bedrooms

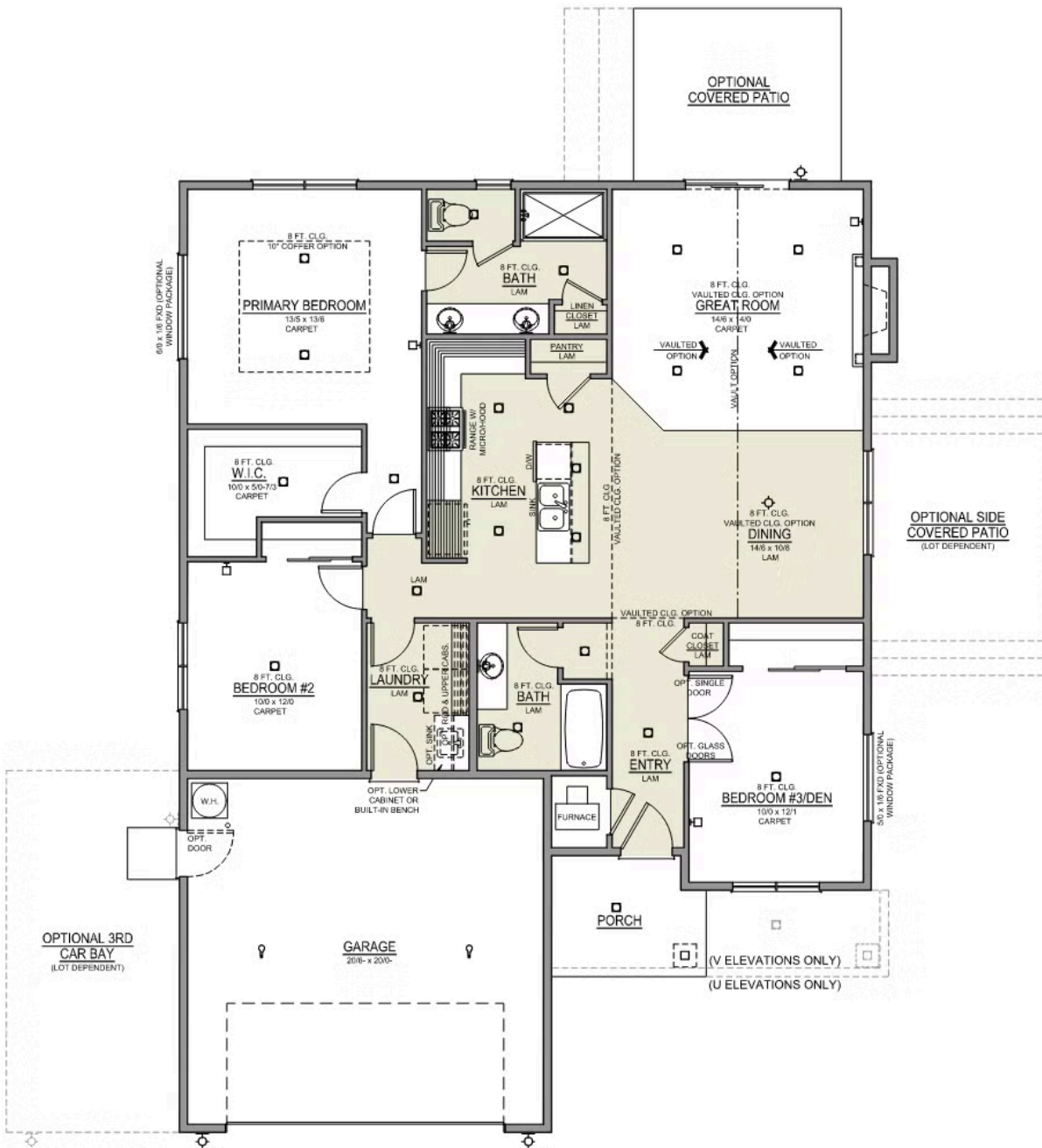
2 Bathrooms

1,488 Sq. Ft.

2 Car Garage

499,900

McKenzie 2-Car
1,488 Sq. Ft.
3 Bedroom, 2 Bath



Canyon Trails

OPTIONS

McKenzie Premier
LOT 34

1178 NW Varnish Ln. Redmond, OR 97756

 3 Bedrooms  2 Bathrooms  1,488 Sq. Ft.  2 Car Garage  499,900

- Interior Color Package: "Crystal Heights". Painted Cabinets (All cabinets in house MUST be selected as "PAINTED")
- Exterior Color Package: Rustic Woods
- Light Fixtures: Acadia
- Doors: Hardware Standard. "Cove" knobs / "Amador" front door handle.
- Doors: Hardware upgrade to "Ladera" Levers.
- Bathroom: Upgraded finishes in BLACK. Soaker Tub NOT included. All bathrooms. (Plumbing Fixtures, bath accessories and shower door hardware)
- Bathroom: Shower Enclosure(s) Glass Color Choice
- Electrical: Tech Package Pre Wire - Includes Panel, 110 outlet, 1 Dual Wall Plate (Coax & Ethernet) in Great Room
- Windows Package: Optional Windows
- Ceilings: (Premier Series Only) Vault in Great Room and Coffered Ceiling in Primary Bedroom.
- Kitchen: 30" Cabinets. PAINTED Kitchen & Bathroom Cabinets.
- Laundry Room: Add Upper PAINTED 36" Cabinets above Washer/Dryer.
- Cabinets: Specify Color of Knobs and Pulls
- Kitchen: Full Height Backsplash
- Counters: Quartz Counters and Backsplash in Kitchen
- Counters: Quartz Counters and Backsplash in Guest Bath
- Counters: Quartz Counters and Backsplash in Primary Bath
- Bathroom: Shampoo Niche in Tile Shower. 16x22
- Bathroom: Tile Shower in Place of Walk-In Fiberglass Shower. 5-ft Shower w/ Fiberglass Pan
- Kitchen: Pendant Lights over Kitchen Island - In place of recessed LED
- Electrical: Recessed LEDs. Add 2 for 4 total+ Dimmer in Primary Bedroom.
- Doors: Kitchen Pantry Door w/ Glass (Frosted w/ Border).
- Flooring: Great Room - Wood Laminate (Casita Court)
- Garage: Garage Door Opener
- Garage: Garage Door Opener Wireless Keypad
- HVAC: Air Conditioner Only (Optional "PreWire" must be previously selected).
- HVAC: Air Conditioner PreWire. Dedicated 220 Outlet (For AC or Mini Split)
- Fireplace: Gas Fireplace (Direct Vent) with Mantel and Stone Surround
- Landscape: Backyard Landscaping. Up to a 60-ft wide lot
- Kitchen: Farm Sink - Stainless Steel Single Bowl
REQUIRES QUARTZ COUNTERTOPS
- Kitchen or Laundry Sink: Upgrade Faucet to Moen Arbor. SPECIFY Location(s) and Color (Kitchen or Laundry, and Black or Spot Resistant Stainless).
- Bathroom: Add Glass Bypass Shower Enclosure to Tub/Shower.

MonteVista
HOMES

541-640-5225

In a continual effort to improve our product, MonteVista Homes reserves the right to change product design, features, materials, floor plans, specifications, prices and terms without prior notice. Square footage stated or implied are approximate. Images may be representative of future home and show what's possible not what's included. Seller is a licensed real estate broker in the State of Oregon. CCB#203709

