

# Canyon Trails

McKenzie Premier  
LOT 42

3433 NW 12th St. Redmond, OR 97756

🏠 3 Bedrooms

🚿 2 Bathrooms

📏 1,488 Sq. Ft.

🚗 2 Car Garage

🏷️ 519,997

UNDER CONSTRUCTION



V - FARMHOUSE - 2-CAR



- Kitchen Island with Sink
- Kitchen Pantry
- Open Great Room with Gas Fireplace
- Primary Suite with Walk-in Closet

- Quartz Countertops throughout Home
- Stainless Steel Appliances
- Covered Front Porch

MonteVista  
HOMES

541-640-5225

*In a continual effort to improve our product, MonteVista Homes reserves the right to change product design, features, materials, floor plans, specifications, prices and terms without prior notice. Square footage stated or implied are approximate. Images may be representative of future home and show what's possible not what's included. Seller is a licensed real estate broker in the State of Oregon. CCB#203709*



# Canyon Trails

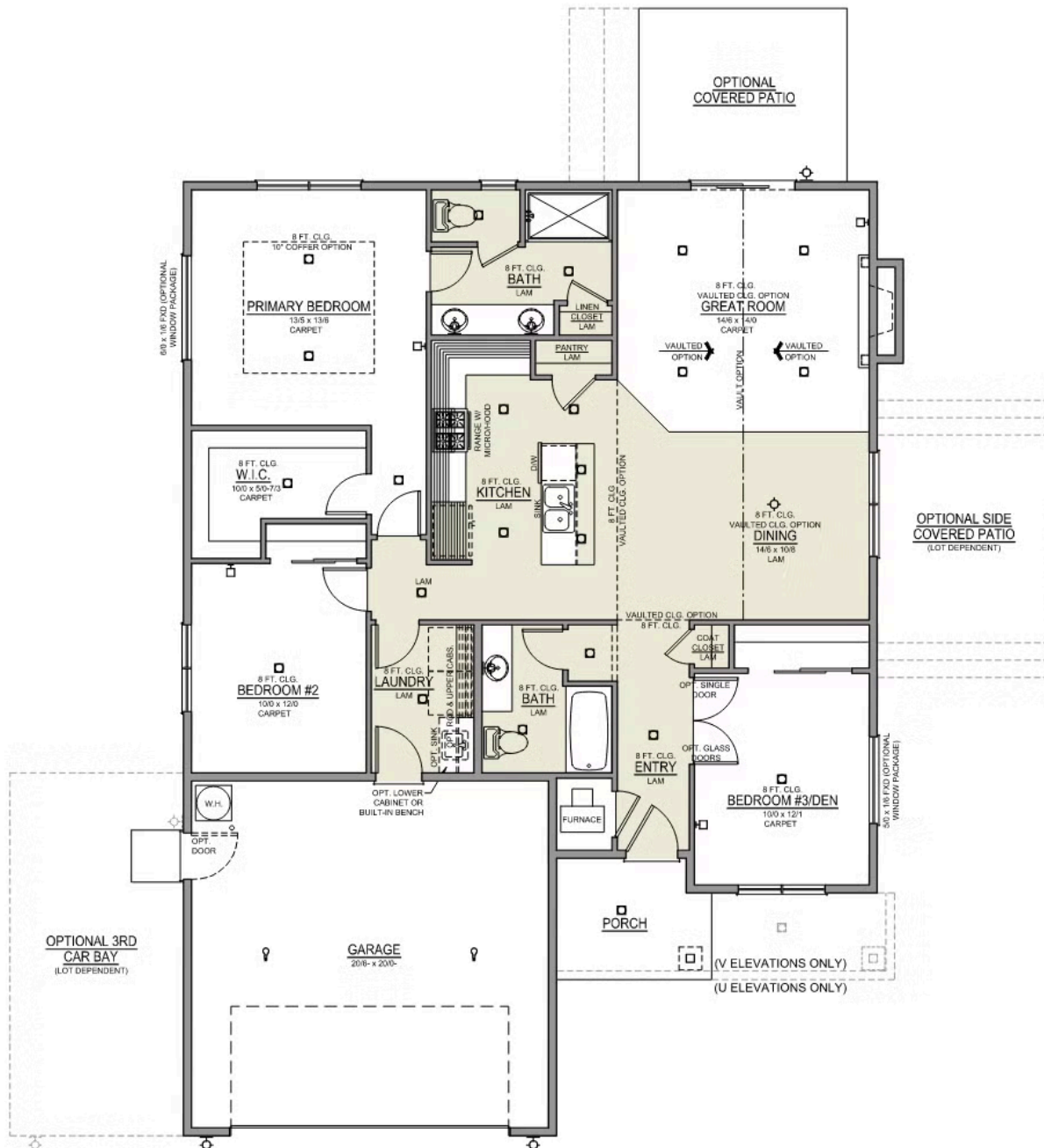
## McKenzie Premier LOT 42

3433 NW 12th St. Redmond, OR 97756

3 Bedrooms 2 Bathrooms 1,488 Sq. Ft. 2 Car Garage 519,997

### McKenzie 2-Car

1,488 Sq. Ft.  
3 Bedroom, 2 Bath



# Canyon Trails

## OPTIONS

McKenzie Premier  
LOT 42

3433 NW 12th St. Redmond, OR 97756

 3 Bedrooms

 2 Bathrooms

 1,488 Sq. Ft.

 2 Car Garage

 519,997

- Interior Color Package: "Crystal Heights". Painted Cabinets (All cabinets in house MUST be selected as "PAINTED")
- Exterior Color Package: Alpine Trail
- Light Fixtures: Acadia
- Doors: Hardware Standard. "Cove" knobs / "Amador" front door handle.
- Bathroom: Upgrade finishes to BLACK - All bathrooms. Soaker Tub NOT included. (Plumbing Fixtures, bath accessories and shower door hardware)
- Bathroom: Shower Enclosure Glass Color Choice
- Electrical Package: Tech Package Pre Wire - Includes Panel, 110 outlet, 1 Dual Wall Plate (Coax & Ethernet) in Great Room
- Windows Package: Optional Windows
- Ceilings: Vault in Great Room and Coffered Ceiling in Primary Bedroom
- Kitchen: 30" Cabinets. PAINTED Kitchen & Bathroom Cabinets.
- Laundry Utility Room: Upper Cabinets - 30" Cabs
- Laundry Room: Add Upper PAINTED 30" Cabinets above Washer/Dryer.
- Cabinets: Knobs and Pulls
- Kitchen: Full Height Backsplash
- Exterior Covered Patio: Rear - 14x10
- Kitchen: Pendant Lights over Kitchen Island - In place of recessed LED
- Electrical: Recessed LEDs. Add 2 for 4 total+ Dimmer in Primary Bedroom.
- Doors Package: Add Optional 6/8 Interior Doors (Premier Series Only)
- Flooring: Great Room - Wood Laminate (Casita Court)
- Garage: Garage Door Opener
- Garage: Garage Door Opener Wireless Keypad
- HVAC: Air Conditioner PreWire (Dedicated 220 Outlet)
- Fireplace: (Direct Vent) with Mantel and Stone Surround
- Kitchen: Farm Sink - Stainless Steel Single Bowl
- Kitchen or Laundry Sink: Upgrade Faucet to Moen Arbor - Specify Color, Quantity and Location(s)

**MonteVista**  
HOMES

**541-640-5225**

*In a continual effort to improve our product, MonteVista Homes reserves the right to change product design, features, materials, floor plans, specifications, prices and terms without prior notice. Square footage stated or implied are approximate. Images may be representative of future home and show what's possible not what's included. Seller is a licensed real estate broker in the State of Oregon. CCB#203709*

