

# Canyon Trails

Sycamore Premier  
LOT 37

3333 NW 12th St. Redmond, OR 97756

3 Bedrooms 2 Bathrooms 1,553 Sq. Ft. 2 Car Garage 514,900

UNDER CONSTRUCTION



T - TRADITIONAL, 2 CAR



- Kitchen Center Island with Sink
- Kitchen Pantry
- Great Room with Fireplace

- Primary Suite with Walk-in Closet
- Quartz Countertops throughout the Home
- Stainless Steel Appliances

MonteVista  
HOMES

541-640-5225

In a continual effort to improve our product, MonteVista Homes reserves the right to change product design, features, materials, floor plans, specifications, prices and terms without prior notice. Square footage stated or implied are approximate. Images may be representative of future home and show what's possible not what's included. Seller is a licensed real estate broker in the State of Oregon. CCB#203709



# Canyon Trails

## Sycamore Premier LOT 37

3333 NW 12th St. Redmond, OR 97756

 3 Bedrooms

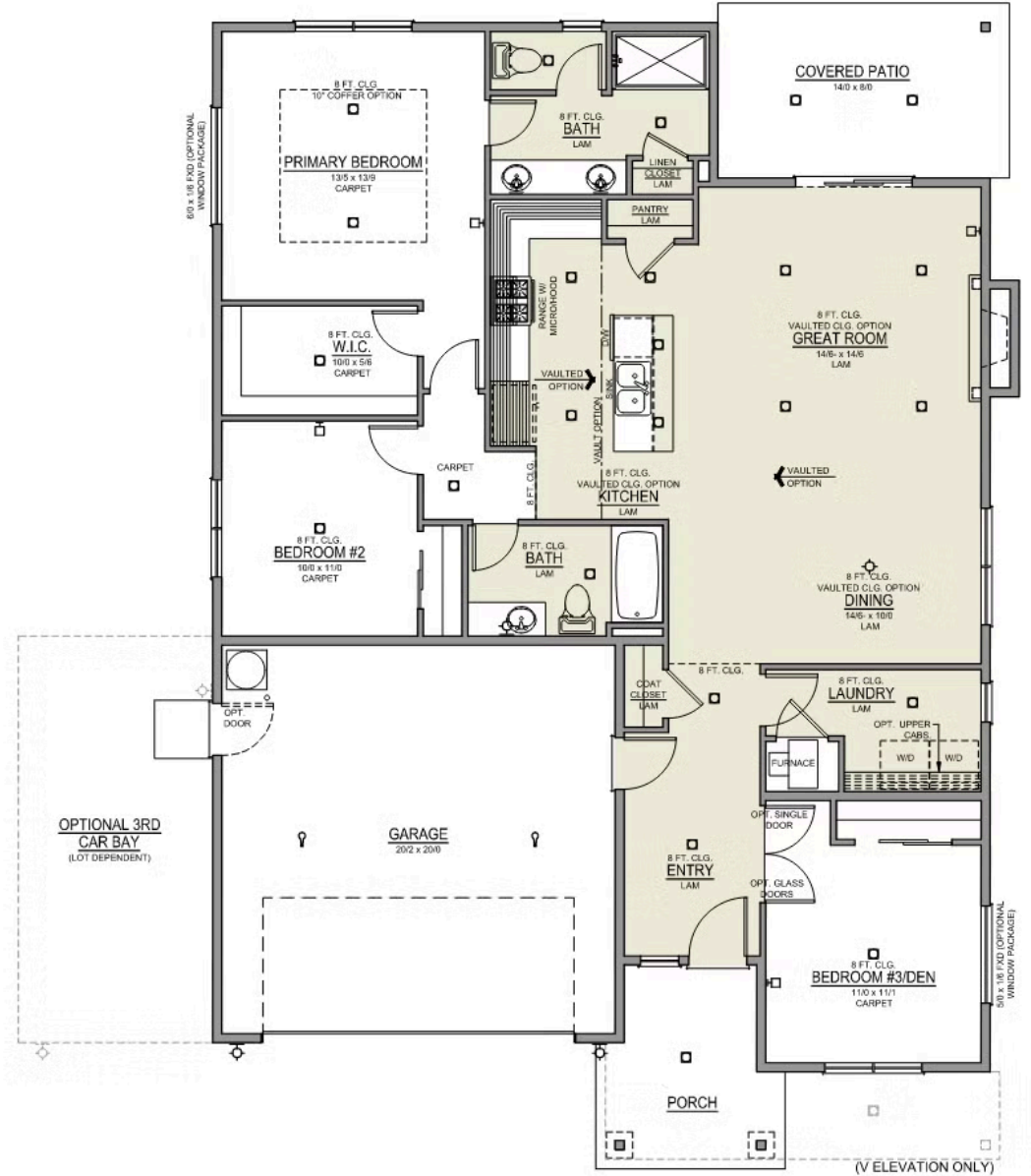
 2 Bathrooms

 1,553 Sq. Ft.

 2 Car Garage

 514,900

Sycamore 2-Car  
1,553 Sq. Ft.  
3 Bedroom, 2 Bath



# Canyon Trails

## OPTIONS

Sycamore Premier  
LOT 37

3333 NW 12th St. Redmond, OR 97756

 3 Bedrooms  2 Bathrooms  1,553 Sq. Ft.  2 Car Garage  514,900

- Interior Color Package: "Horizon Pine"
- Exterior Color Package: Spring Mist
- Light Fixtures: Acadia
- Doors: Hardware Standard. "Cove" knobs / "Amador" front door handle.
- Bathroom: Upgraded finishes in BLACK. Soaker Tub NOT included. All bathrooms. (Plumbing Fixtures, bath accessories and shower door hardware)
- Bathroom: Shower Enclosure(s) Glass Color Choice
- Electrical: Tech Package Pre Wire - Includes Panel, 110 outlet, 1 Dual Wall Plate (Coax & Ethernet) in Great Room
- Windows Package: Optional Windows
- Ceilings: (Premier Series Only) Vault in Great Room and Coffered Ceiling in Primary Bedroom.
- Laundry Room: Add Upper Stained 30" Cabinets above Washer/Dryer.
- Kitchen: 36" Cabinets.
- Cabinets: Specify Color of Knobs and Pulls
- Kitchen: Full Height Backsplash
- Counters: Quartz Counters and Backsplash in Kitchen
- Counters: Quartz Counters and Backsplash in Guest Bath
- Counters: Quartz Counters and Backsplash in Primary Bath
- Electrical: Recessed LEDs. Add 2 for 4 total+ Dimmer in Primary Bedroom.
- Doors: Kitchen Pantry Door w/ Glass (Frosted w/ Border).
- Flooring: Hallway Down - Wood Laminate (Casita Court)
- Garage: Garage Door Opener
- Garage: Garage Door Opener Wireless Keypad
- HVAC: Air Conditioner Only (Optional "PreWire" must be previously selected).
- HVAC: Air Conditioner PreWire. Dedicated 220 Outlet (For AC or MiniSplit)
- Fireplace: Gas Fireplace (Direct Vent) with Mantel and Stone Surround
- Landscape: Backyard Landscaping. Up to a 60-ft wide lot
- Exterior: Stone on all Front Column(s)
- Exterior: Stone Garage Wing Wall
- Kitchen or Laundry Sink: Upgrade Faucet to Moen Arbor. SPECIFY Location(s) and Color (Kitchen or Laundry, and Black or Spot Resistant Stainless).
- Cabinets in Laundry Room are to be Upper Stained 36" Cabinets \*\*ESTIMATED- PO PULLING IN CORRECTLY, BUT PROFORMA LISTED BOTH 30" AND 36" THIS REQUEST IS JUST A NOTE IN ORDER FOR PROFORMA TO READ CORRECTLY\*\*\*

MonteVista  
HOMES

541-640-5225

*In a continual effort to improve our product, MonteVista Homes reserves the right to change product design, features, materials, floor plans, specifications, prices and terms without prior notice. Square footage stated or implied are approximate. Images may be representative of future home and show what's possible not what's included. Seller is a licensed real estate broker in the State of Oregon. CCB#203709*

