

Canyon Trails

Sycamore Premier
LOT 35

1190 NW Varnish Ln. Redmond, OR 97756

3 Bedrooms 2 Bathrooms 1,553 Sq. Ft. 2 Car Garage 509,900

MOVE-IN READY



U - CRAFTSMAN, 2 CAR



- Kitchen Center Island with Sink
- Kitchen Pantry
- Great Room with Fireplace

- Primary Suite with Walk-in Closet
- Quartz Countertops throughout the Home
- Stainless Steel Appliances

MonteVista
HOMES

541-640-5225

In a continual effort to improve our product, MonteVista Homes reserves the right to change product design, features, materials, floor plans, specifications, prices and terms without prior notice. Square footage stated or implied are approximate. Images may be representative of future home and show what's possible not what's included. Seller is a licensed real estate broker in the State of Oregon. CCB#203709



Canyon Trails

Sycamore Premier
LOT 35

1190 NW Varnish Ln. Redmond, OR 97756

3 Bedrooms

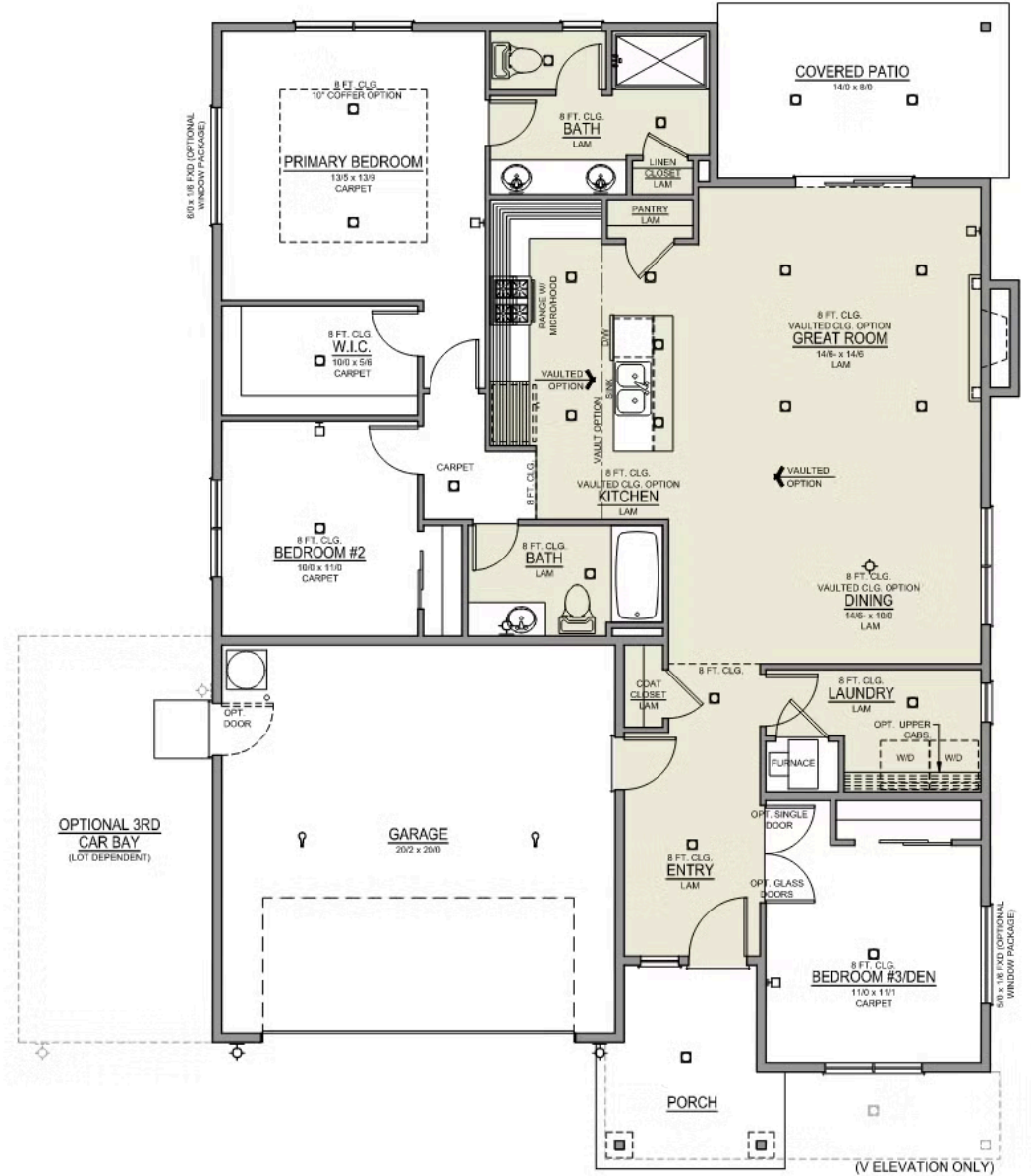
2 Bathrooms

1,553 Sq. Ft.

2 Car Garage

509,900

Sycamore 2-Car
1,553 Sq. Ft.
3 Bedroom, 2 Bath







Canyon Trails

OPTIONS

Sycamore Premier
LOT 35

1190 NW Varnish Ln. Redmond, OR 97756

 3 Bedrooms  2 Bathrooms  1,553 Sq. Ft.  2 Car Garage  509,900

- Interior Color Package: "Haven Valley". Painted Cabinets (All cabinets in house MUST be selected as "PAINTED")
- Exterior Color Package: Twilight Ridge
- Light Fixtures: Acadia
- Doors: Hardware Standard. "Cove" knobs / "Amador" front door handle.
- Doors: Hardware upgrade to "Ladera" Levers.
- Bathroom: Shower Enclosure(s) Glass Color Choice
- Electrical: Tech Package Pre Wire - Includes Panel, 110 outlet, 1 Dual Wall Plate (Coax & Ethernet) in Great Room
- Ceilings: (Premier Series Only) Vault in Great Room and Coffered Ceiling in Primary Bedroom.
- Laundry Room: Add Upper PAINTED 36" Cabinets above Washer/Dryer.
- Kitchen: 36" Cabinets. PAINTED Kitchen & Bathroom Cabinets.
- Cabinets: Specify Color of Knobs and Pulls
- Kitchen: Full Height Backsplash
- Counters: Quartz Counters and Backsplash in Kitchen
- Counters: Quartz Counters and Backsplash in Guest Bath
- Counters: Quartz Counters and Backsplash in Primary Bath
- Electrical: Recessed LEDs. Add 2 for 4 total+ Dimmer in Primary Bedroom.
- Fencing: Cedar, Dog-eared, 6' tall. (50 ft Min. Order)
- Garage: Man Door (Exterior door from garage to outside). Includes: Exterior coach light, 6'-8" 2-Panel door, and 3'x3' concrete landing.
- Doors: Kitchen Pantry Door w/ Glass (Frosted w/ Border).
- Flooring: Hallway Down - Wood Laminate (Casita Court)
- Garage: Garage Door Opener
- Garage: Garage Door Opener Wireless Keypad
- HVAC: Air Conditioner Only (Optional "PreWire" must be previously selected).
- HVAC: Air Conditioner PreWire. Dedicated 220 Outlet (For AC or MiniSplit)
- Fireplace: Gas Fireplace (Direct Vent) with Mantel and Stone Surround
- Landscape: Backyard Landscaping. Up to a 60-ft wide lot
- Kitchen: Farm Sink - Stainless Steel Single Bowl
REQUIRES QUARTZ COUNTERTOPS
- Kitchen or Laundry Sink: Upgrade Faucet to Moen Arbor. SPECIFY Location(s) and Color (Kitchen or Laundry, and Black or Spot Resistant Stainless).

MonteVista
HOMES

541-640-5225

In a continual effort to improve our product, MonteVista Homes reserves the right to change product design, features, materials, floor plans, specifications, prices and terms without prior notice. Square footage stated or implied are approximate. Images may be representative of future home and show what's possible not what's included. Seller is a licensed real estate broker in the State of Oregon. CCB#203709

