

# Canyon Trails

Thielsen Premier  
LOT 39

3377 NW 12th St. Redmond, OR 97756

4 Bedrooms 2.5 Bathrooms 2,373 Sq. Ft. 2 Car Garage 639,900

UNDER CONSTRUCTION



V - FARMHOUSE, 2 CAR



- Primary Suite on Main Level with Walk-in Closet
- Great Room with Fireplace
- Upstairs Bonus Room / Loft
- Kitchen Island and Pantry
- 9 Foot Ceilings throughout Main Level
- Quartz Countertops throughout the Home
- Stainless Steel Appliances

MonteVista  
HOMES

541-640-5225

In a continual effort to improve our product, MonteVista Homes reserves the right to change product design, features, materials, floor plans, specifications, prices and terms without prior notice. Square footage stated or implied are approximate. Images may be representative of future home and show what's possible not what's included. Seller is a licensed real estate broker in the State of Oregon. CCB#203709



# Canyon Trails

Thielsen Premier  
LOT 39

3377 NW 12th St. Redmond, OR 97756

4 Bedrooms

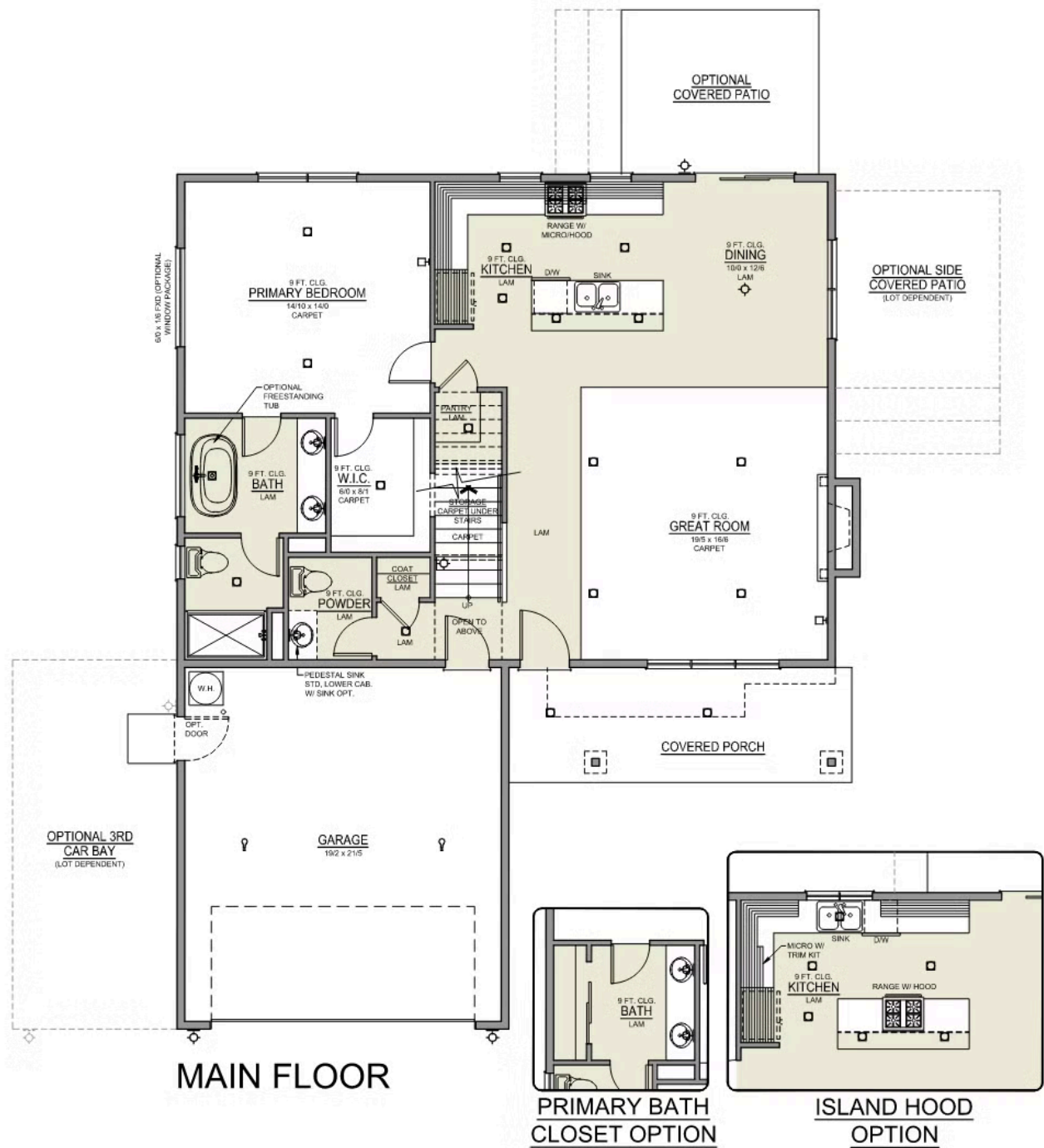
2.5 Bathrooms

2,373 Sq. Ft.

2 Car Garage

639,900

Thielsen 2-Car  
2,373 Sq. Ft.  
4 Bedroom, 3 Bath




# Canyon Trails

Thielsen Premier  
LOT 39

3377 NW 12th St. Redmond, OR 97756

 4 Bedrooms

 2.5 Bathrooms

 2,373 Sq. Ft.

 2 Car Garage

 639,900

Thielsen 2-Car  
2,373 Sq. Ft.  
4 Bedroom, 3 Bath



UPPER FLOOR

# Canyon Trails

## OPTIONS

Thielsen Premier  
LOT 39

3377 NW 12th St. Redmond, OR 97756

 4 Bedrooms  2.5 Bathrooms  2,373 Sq. Ft.  2 Car Garage  639,900

- Interior Color Package: "Mountain Vogue". Painted Cabinets (All cabinets in house MUST be selected as "PAINTED")
- Exterior Color Package: Alpine Trail
- Light Fixtures: Acadia
- Doors: Hardware Standard. "Cove" knobs / "Amador" front door handle.
- Bathroom: Upgrade finishes to BLACK. Soaker Tub INCLUDED. All bathrooms. (Plumbing Fixtures, bath accessories and shower door hardware)
- Bathroom: Shower Enclosure(s) Glass Color Choice
- Electrical: Tech Package Pre Wire - Includes Panel, 110 outlet, 1 Dual Wall Plate (Coax & Ethernet) in Great Room
- Convert Package: Theilsen, Miranda, and Kailua - Enclose upstairs Loft. (THE: Glass French Doors to make bonus room. MDA & KAI: Single door + Closet to make 5th bedroom).
- Laundry Room: Add Lower PAINTED Cabs. With Quartz Top and Backsplash.
- Cabinets: Color of Knobs and Pulls
- Kitchen: Full Height Backsplash
- Counters: Quartz Counters and Backsplash in Kitchen
- Counters: Quartz Counters and Backsplash in Guest Bath
- Counters: Quartz Counters and Backsplash in Primary Bath
- Exterior Covered Patio: Rear - 12x10
- Kitchen: Pendant Lights over Kitchen Island - In place of recessed LED
- Electrical: Recessed LEDs. Add 2 for 4 total+ Dimmer in Primary Bedroom.
- Electrical: Recessed LEDs. Add 2 for 4 total + Dimmer in Bonus Room, Loft, or Origin Series.
- Doors Package: Upgrade to 5-Panel Interior Doors.
- Flooring: Great Room - Wood Laminate (Casita Court)
- Garage: Garage Door Opener
- Garage: Garage Door Opener Wireless Keypad
- HVAC: Air Conditioner Only (Optional "PreWire" must be previously selected).
- HVAC: Air Conditioner PreWire. Dedicated 220 Outlet (For AC or MiniSplit)
- Fireplace: Gas Fireplace (Direct Vent) with Mantel and Stone Surround
- Landscape: Backyard Landscaping. Up to a 60-ft wide lot
- Kitchen or Laundry Sink: Upgrade Faucet to Moen Arbor - Specify Color (Black or SRS), Quantity and Location(s)
- Bathroom: Freestanding Soaker Tub

MonteVista  
HOMES

541-640-5225

*In a continual effort to improve our product, MonteVista Homes reserves the right to change product design, features, materials, floor plans, specifications, prices and terms without prior notice. Square footage stated or implied are approximate. Images may be representative of future home and show what's possible not what's included. Seller is a licensed real estate broker in the State of Oregon. CCB#203709*

