



Feather Ridge

Astoria Origin
LOT 198

3962 SW Obsidian Ave. Redmond, OR 97756

 2 Bedrooms  1 Bathrooms  880 Sq. Ft.  2 Car Garage  409,900

UNDER CONSTRUCTION



M - MODERN



- Open Concept Great Room
- Covered Front Porch
- Luxury Wood Laminate Flooring

- Stainless Steel Kitchen Appliances
- Laundry/Mudroom Access from the Garage
- Attached External Storage

MonteVista
HOMES

541-640-5225

In a continual effort to improve our product, MonteVista Homes reserves the right to change product design, features, materials, floor plans, specifications, prices and terms without prior notice. Square footage stated or implied are approximate. Images may be representative of future home and show what's possible not what's included. Seller is a licensed real estate broker in the State of Oregon. CCB#203709



Feather Ridge

Astoria Origin
LOT 198

3962 SW Obsidian Ave. Redmond, OR 97756

 2 Bedrooms

 1 Bathrooms

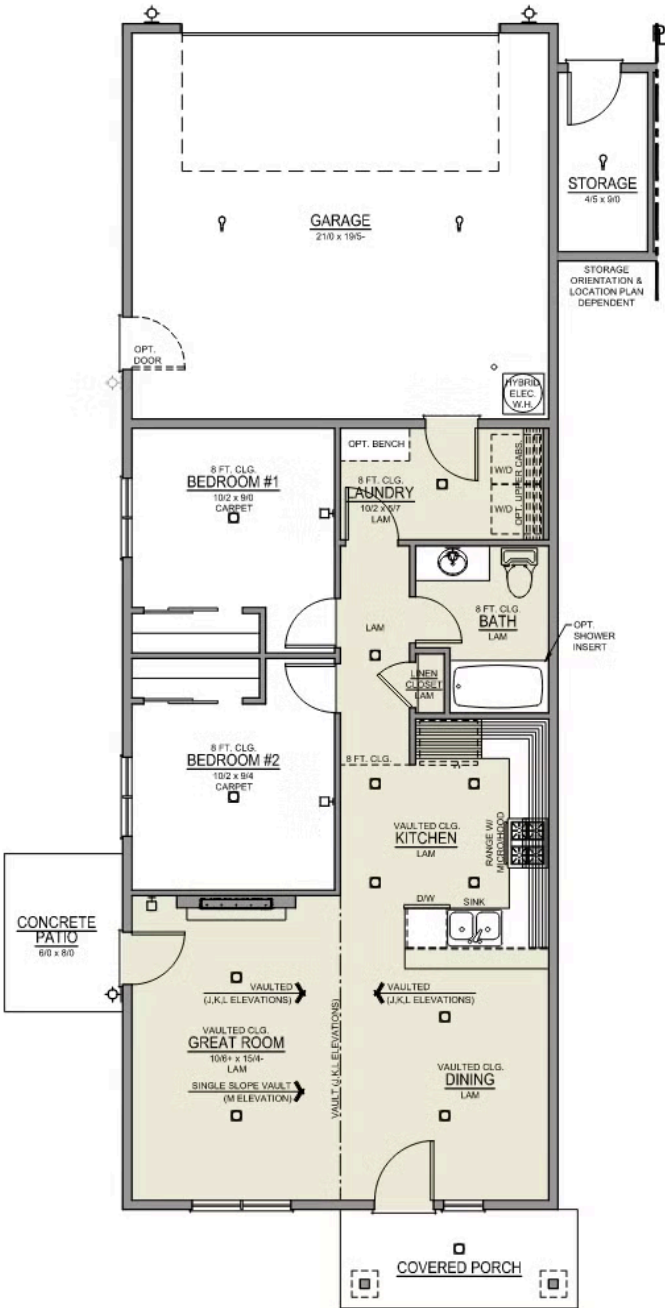
 880 Sq. Ft.

 2 Car Garage

 409,900

Astoria 2-Car

880 Sq. Ft.
2 Bedroom, 1 Bath



Feather Ridge

OPTIONS

Astoria Origin
LOT 198

3962 SW Obsidian Ave. Redmond, OR 97756

 2 Bedrooms

 1 Bathrooms

 880 Sq. Ft.

 2 Car Garage

 409,900

- Interior Color Package: "Horizon Pine"
 - Exterior Color Package: Spring Mist
 - Light Fixtures: Acadia
 - Doors: Hardware Standard. "Cove" knobs / "Amador" front door handle.
 - Bathroom: Shower Enclosure(s) Glass Color Choice
 - Corner Lot Exterior Package: Includes Window trim on Corner Side, Flatwork and Corner Lot Landscaping
 - Electrical: Tech Package Pre Wire - Includes Panel, 110 outlet, 1 Dual Wall Plate (Coax & Ethernet) in Great Room
 - Cabinets: Color of Knobs and Pulls
- Countertops: Quartz in Kitchen
 - Backsplash: Quartz (6") in Kitchen.
 - Bathroom: Replace Fiberglass "Tub/Shower" with Fiberglass "Walk-In Shower" + Glass door.
 - Electrical Fixtures: Ceiling Fan. Per Room (For Primary Bedroom, Great Room, Loft, or Bonus Room). Wiring + Fixture.
 - Garage: Garage Door Opener
 - Garage: Garage Door Opener Wireless Keypad
 - HVAC: System - Ductless Heating & AC "Mini Split" (Includes Prewire).
 - Fireplace: Electric Fireplace - Drywall Floor-to-Ceiling with Mantel. (Origin Series)

MonteVista
HOMES

541-640-5225

In a continual effort to improve our product, MonteVista Homes reserves the right to change product design, features, materials, floor plans, specifications, prices and terms without prior notice. Square footage stated or implied are approximate. Images may be representative of future home and show what's possible not what's included. Seller is a licensed real estate broker in the State of Oregon. CCB#203709

