


Feather Ridge

Astoria Origin
LOT 194

4010 SW Obsidian Ave. Redmond, OR 97756

 2 Bedrooms

 1 Bathrooms

 880 Sq. Ft.

 2 Car Garage

 399,997

MOVE-IN READY



L - FARMHOUSE



- Open Concept Great Room
- Covered Front Porch
- Luxury Wood Laminate Flooring

- Stainless Steel Kitchen Appliances
- Laundry/Mudroom Access from the Garage
- Attached External Storage

MonteVista
HOMES

541-640-5225

In a continual effort to improve our product, MonteVista Homes reserves the right to change product design, features, materials, floor plans, specifications, prices and terms without prior notice. Square footage stated or implied are approximate. Images may be representative of future home and show what's possible not what's included. Seller is a licensed real estate broker in the State of Oregon. CCB#203709



Feather Ridge

Astoria Origin
LOT 194

4010 SW Obsidian Ave. Redmond, OR 97756

 2 Bedrooms

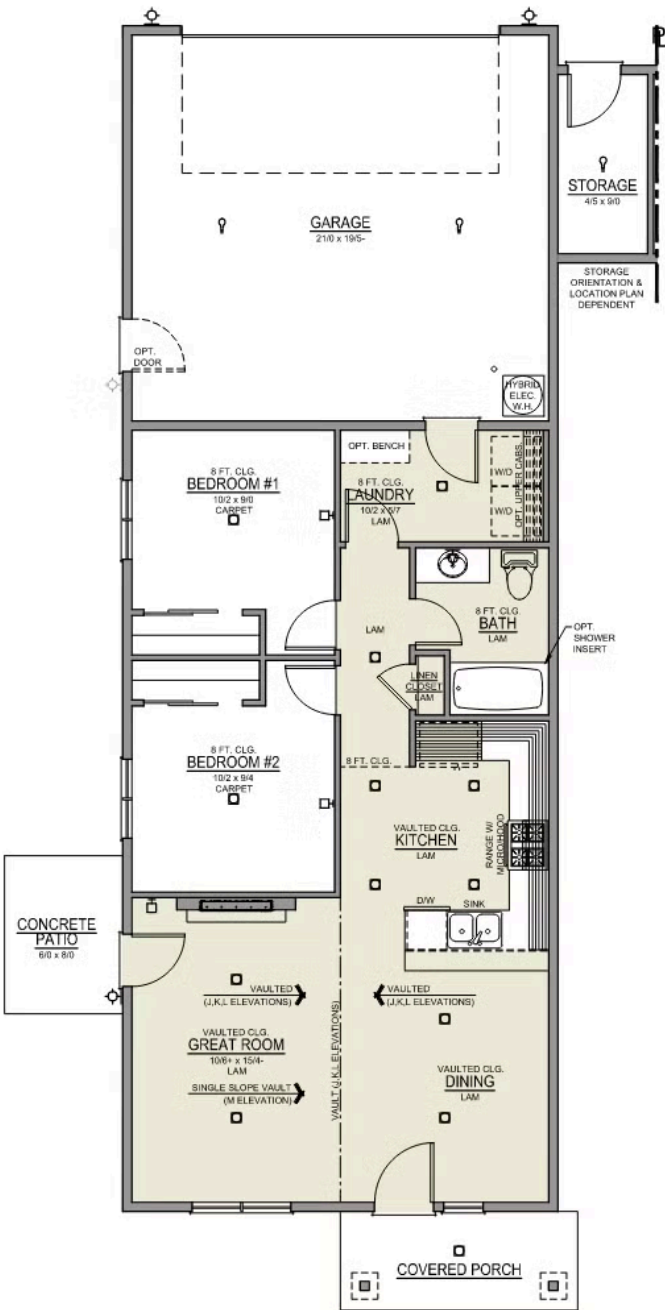
 1 Bathrooms

 880 Sq. Ft.

 2 Car Garage

 399,997

Astoria 2-Car
880 Sq. Ft.
2 Bedroom, 1 Bath



Feather Ridge

OPTIONS

Astoria Origin
LOT 194

4010 SW Obsidian Ave. Redmond, OR 97756

 2 Bedrooms  1 Bathrooms  880 Sq. Ft.  2 Car Garage  399,997

- Interior Color Package: "Haven Valley". Painted Cabinets (All cabinets in house MUST be selected as "PAINTED")
- Exterior Color Package: Alpine Trail
- Light Fixtures: Acadia
- Doors: Hardware Standard. "Cove" knobs / "Amador" front door handle.
- Bathroom: Upgraded finishes in BLACK. Soaker Tub NOT included. All bathrooms. (Plumbing Fixtures, bath accessories and shower door hardware)
- Bathroom: Shower Enclosure(s) Glass Color Choice
- Electrical: Tech Package Pre Wire - Includes Panel, 110 outlet, 1 Dual Wall Plate (Coax & Ethernet) in Great Room
- Kitchen: 30" Cabinets. PAINTED Kitchen & Bathroom Cabinets.
- Cabinets: Color of Knobs and Pulls
- Counters: Quartz Counters and Backsplash in Kitchen
- Bathroom: Replace Fiberglass "Tub/Shower" with Fiberglass "Walk-In Shower" + Glass door.
- Electrical: Ceiling Fan - PRE-WIRE ONLY. Per Room (For Bedroom 2, 4, or 3/Den) + 1 Additional LED light.
- Garage: Garage Door Opener
- Garage: Garage Door Opener Wireless Keypad
- HVAC: Ductless Heating & AC - Mini Split
- Fireplace: Electric Fireplace - Drywall Floor-to-Ceiling with Mantel. (Origin Series)
- Fireplace: Add Shiplap to Electric Fireplace Drywall. Floor-to-Ceiling.
- Landscape: FR - Replace Side Yard "Gray gravel" with "Sod & 1 Sprinkler Zone".
- Kitchen or Laundry Sink: Upgrade Faucet to Moen Arbor. SPECIFY Location(s) and Color (Kitchen or Laundry, and Black or Spot Resistant Stainless).
- Blinds: Faux Wood White. No optional Windows
- Add tile shower option (fiberglass pan with tile wall surround) with shampoo niche in bathroom. Add clear glass door. **ESTIMATED**

MonteVista
HOMES

541-640-5225

In a continual effort to improve our product, MonteVista Homes reserves the right to change product design, features, materials, floor plans, specifications, prices and terms without prior notice. Square footage stated or implied are approximate. Images may be representative of future home and show what's possible not what's included. Seller is a licensed real estate broker in the State of Oregon. CCB#203709

