

Feather Ridge

Astoria Origin
LOT 188

4110 SW Obsidian Ave. Redmond, OR 97756

🏠 2 Bedrooms

🚿 1 Bathrooms

🏠 880 Sq. Ft.

🚗 2 Car Garage

🏷️ 394,900

UNDER CONSTRUCTION



K - CRAFTSMAN



- Open Concept Great Room
- Covered Front Porch
- Luxury Wood Laminate Flooring
- Luxury Vinyl Tile in Bath and Laundry
- Stainless Steel Kitchen Appliances
- Laundry/Mudroom Access from the Garage
- Attached External Storage

MonteVista
HOMES

541-640-5225

In a continual effort to improve our product, MonteVista Homes reserves the right to change product design, features, materials, floor plans, specifications, prices and terms without prior notice. Square footage stated or implied are approximate. Images may be representative of future home and show what's possible not what's included. Seller is a licensed real estate broker in the State of Oregon. CCB#203709



Feather Ridge

Astoria Origin
LOT 188

4110 SW Obsidian Ave. Redmond, OR 97756

🛏 2 Bedrooms

🚿 1 Bathroom

🏠 880 Sq. Ft.

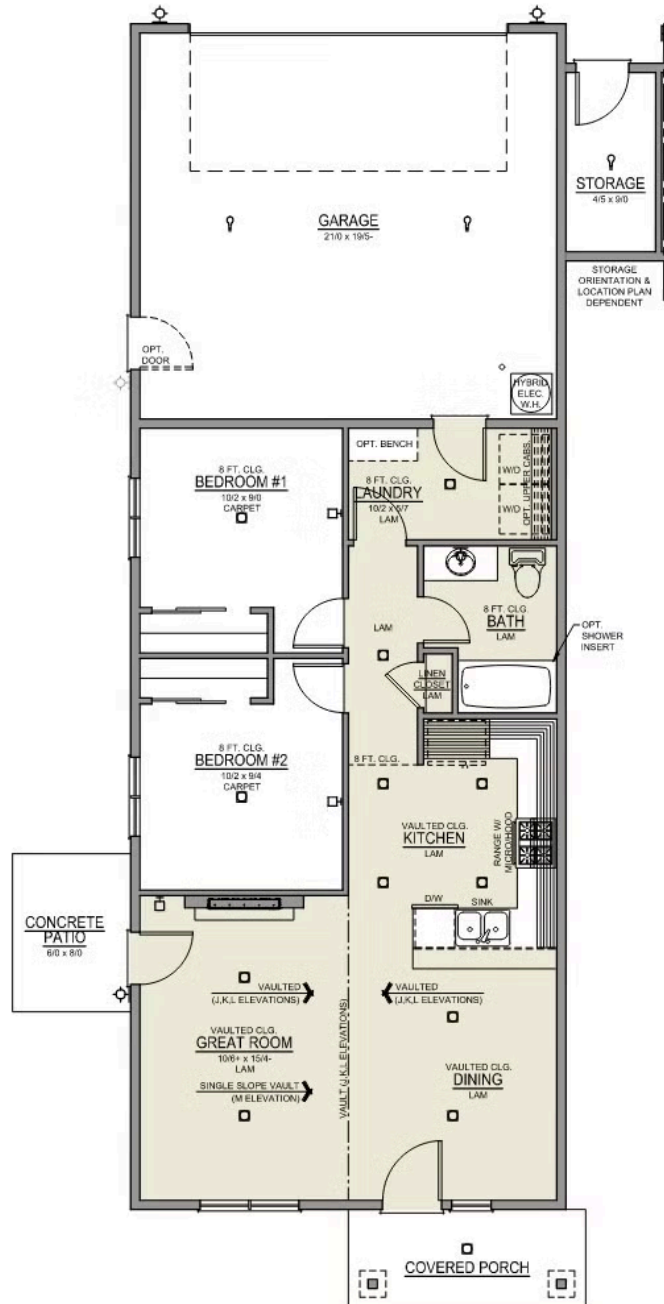
🚗 2 Car Garage

🏠 394,900

Astoria 2-Car

880 Sq. Ft.

2 Bedroom, 1 Bath



Feather Ridge


OPTIONS

Astoria Origin
LOT 188

4110 SW Obsidian Ave. Redmond, OR 97756

 2 Bedrooms

 1 Bathrooms

 880 Sq. Ft.

 2 Car Garage

 394,900

- Interior Color Package: "Haven Valley". Painted Cabinets (All cabinets in house MUST be selected as "PAINTED")
- Exterior Color Package: Rustic Woods
- Light Fixtures: Acadia
- Doors: Hardware Standard. "Cove" knobs / "Amador" front door handle.
- Corner Lot Exterior Package: Includes Window trim on Corner Side, Flatwork and Corner Lot Landscaping
- Electrical: Tech Package Pre Wire - Includes Panel, 110 outlet, 1 Dual Wall Plate (Coax & Ethernet) in Great Room
- Kitchen: 30" Cabinets. PAINTED Kitchen & Bathroom Cabinets.
- Cabinets: Color of Knobs and Pulls
- Counters: Quartz Counters and Backsplash in Kitchen
- Garage: Garage Door Opener
- Garage: Garage Door Opener Wireless Keypad
- HVAC: System - Ductless Heating & AC "Mini Split" (Includes Prewire).

MonteVista
HOMES

541-640-5225

In a continual effort to improve our product, MonteVista Homes reserves the right to change product design, features, materials, floor plans, specifications, prices and terms without prior notice. Square footage stated or implied are approximate. Images may be representative of future home and show what's possible not what's included. Seller is a licensed real estate broker in the State of Oregon. CCB#203709

