




Feather Ridge

Astoria Origin
LOT 156

4115 SW Obsidian Pl. Redmond, OR 97756

 2 Bedrooms  1 Bathrooms  880 Sq. Ft.  2 Car Garage  394,997

MOVE-IN READY



- Open Concept Great Room
- Covered Front Porch
- Luxury Wood Laminate Flooring

- Stainless Steel Kitchen Appliances
- Laundry/Mudroom Access from the Garage
- Attached External Storage

MonteVista
HOMES

541-640-5225

In a continual effort to improve our product, MonteVista Homes reserves the right to change product design, features, materials, floor plans, specifications, prices and terms without prior notice. Square footage stated or implied are approximate. Images may be representative of future home and show what's possible not what's included. Seller is a licensed real estate broker in the State of Oregon. CCB#203709



2 Bedrooms

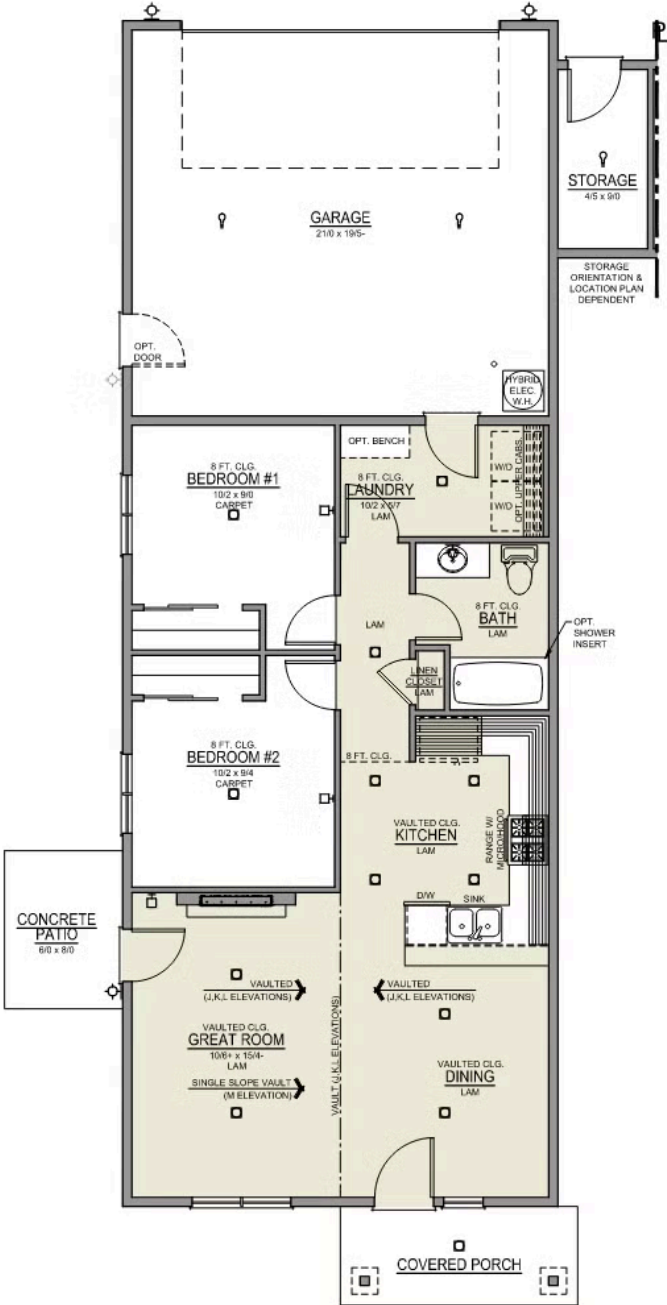
1 Bathrooms

880 Sq. Ft.

2 Car Garage

394,997

Astoria 2-Car
880 Sq. Ft.
2 Bedroom, 1 Bath



Feather Ridge

OPTIONS

Astoria Origin
LOT 156

4115 SW Obsidian Pl. Redmond, OR 97756

 2 Bedrooms

 1 Bathrooms

 880 Sq. Ft.

 2 Car Garage

 394,997

- Interior Color Package: "Crystal Heights". Painted Cabinets (All cabinets in house MUST be selected as "PAINTED")
 - Exterior Color Package: Deschutes Frost
 - Light Fixtures: Acadia
 - Doors: Hardware Standard. "Cove" knobs / "Amador" front door handle.
 - Bathroom: Shower Enclosure(s) Glass Color Choice
 - Electrical: Tech Package Pre Wire - Includes Panel, 110 outlet, 1 Dual Wall Plate (Coax & Ethernet) in Great Room
 - Kitchen: 30" Cabinets. PAINTED Kitchen & Bathroom Cabinets.
- Cabinets: Specify Color of Knobs and Pulls
 - Counters: Quartz Counters and Backsplash in Kitchen
 - Electrical: Ceiling Fan - PRE-WIRE ONLY. Per Room (For Bedroom 2, 4, or 3/Den) + 1 Additional LED light.
 - Fencing: Add Stain - Single Sided. For Cedar, Dog-eared, Fencing and/or Gates, 6' tall. Choose Qty (in LF) & Specify Location.
 - Fencing: Cedar, Dog-eared, 6' tall. (50 ft Min. Order)
 - Fencing: 4' wide Walk Gate. Cedar, Dog-eared, 6' tall.
 - Garage: Garage Door Opener
 - Garage: Garage Door Opener Wireless Keypad
 - HVAC: Ductless Heating & AC - Mini Split

MonteVista
HOMES

541-640-5225

In a continual effort to improve our product, MonteVista Homes reserves the right to change product design, features, materials, floor plans, specifications, prices and terms without prior notice. Square footage stated or implied are approximate. Images may be representative of future home and show what's possible not what's included. Seller is a licensed real estate broker in the State of Oregon. CCB#203709

