

Feather Ridge

Astoria
LOT 194

4010 SW Obsidian Ave. Redmond, OR 97756

🏠 2 Bedrooms

🚿 1 Bathrooms

🏠 880 Sq. Ft.

🚗 2 Car Garage

🏷️ 374,997

\$20K TO USE YOUR WAY



The Astoria is a highly efficient, low-maintenance home that makes the most of its 880 square feet. Its focused layout features a connected great room and kitchen, creating a practical hub for daily routines and relaxation. Two bedrooms and a single bath offer just the right amount of space for simple, easy living. Designed for buyers who value a compact footprint, the Astoria provides an approachable and welcoming foundation for a comfortable life.

MonteVista
HOMES

541-640-5225

In a continual effort to improve our product, MonteVista Homes reserves the right to change product design, features, materials, floor plans, specifications, prices and terms without prior notice. Square footage stated or implied are approximate. Images may be representative of future home and show what's possible not what's included. Seller is a licensed real estate broker in the State of Oregon. CCB#203709



Feather Ridge

Astoria
LOT 194

4010 SW Obsidian Ave. Redmond, OR 97756

🛏 2 Bedrooms

🚿 1 Bathroom

🏠 880 Sq. Ft.

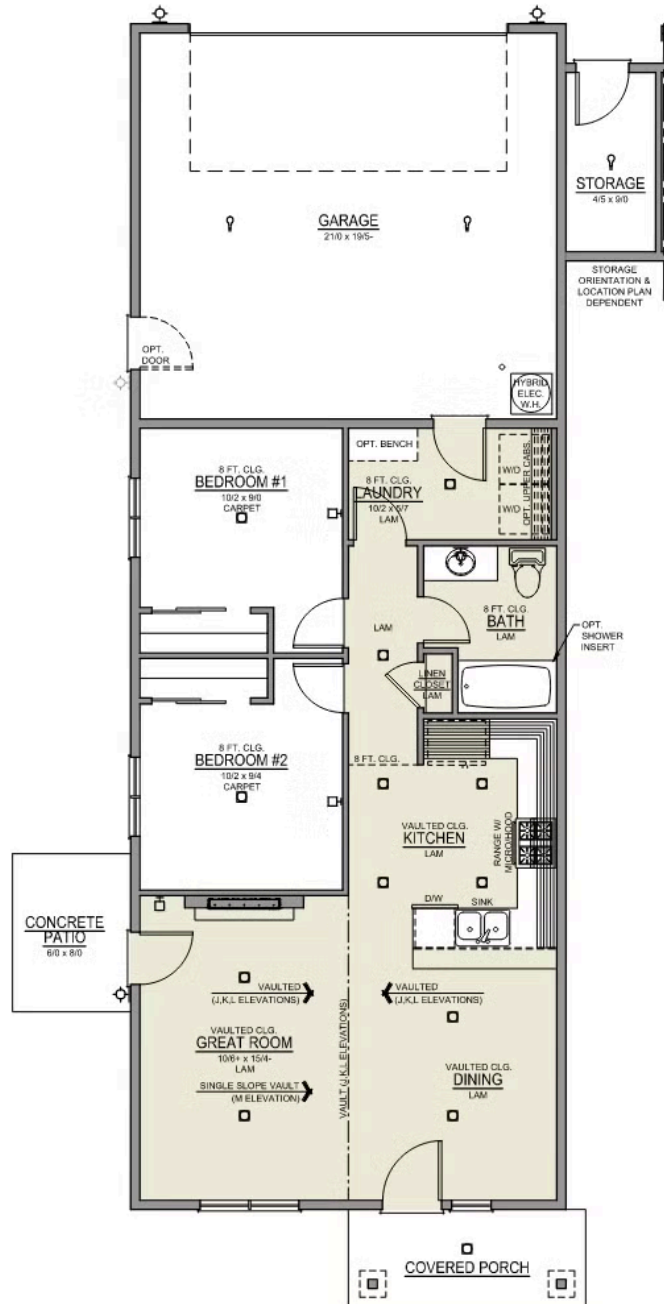
🚗 2 Car Garage

🏷 374,997

Astoria 2-Car

880 Sq. Ft.

2 Bedroom, 1 Bath



Feather Ridge


OPTIONS

Astoria
LOT 194


4010 SW Obsidian Ave. Redmond, OR 97756

 2 Bedrooms

 1 Bathrooms

 880 Sq. Ft.

 2 Car Garage

 374,997

- Interior Color Package: "Haven Valley". Painted Cabinets (All cabinets in house MUST be selected as "PAINTED")
- Exterior Color Package: Alpine Trail
- Light Fixtures: Acadia
- Doors: Hardware Standard. "Cove" knobs / "Amador" front door handle.
- Bathroom: Upgraded finishes in BLACK. Soaker Tub NOT included. All bathrooms. (Plumbing Fixtures, bath accessories and shower door hardware)
- Bathroom: Shower Enclosure(s) Glass Color Choice
- Electrical: Tech Package Pre Wire - Includes Panel, 110 outlet, 1 Dual Wall Plate (Coax & Ethernet) in Great Room
- Kitchen: 30" Cabinets. PAINTED Kitchen & Bathroom Cabinets.
- Cabinets: Color of Knobs and Pulls
- Counters: Quartz Counters and Backsplash in Kitchen
- Bathroom: Replace Fiberglass "Tub/Shower" with Fiberglass "Walk-In Shower" + Glass door.
- Electrical: Ceiling Fan - PRE-WIRE ONLY. Per Room (For Bedroom 2, 4, or 3/Den) + 1 Additional LED light.
- Fencing: Add Stain - Double Sided. For Cedar, Dog-eared, Fencing and/or Gates, 6' tall. Choose Qty (in LF) & Specify Location.
- Fencing: Cedar, Dog-eared, 6' tall. (50 ft Min. Order)
- Fencing: 4' wide Walk Gate. Cedar, Dog-eared, 6' tall.
- Garage: Garage Door Opener
- Garage: Garage Door Opener Wireless Keypad
- HVAC: Ductless Heating & AC - Mini Split
- Fireplace: Electric Fireplace - Drywall Floor-to-Ceiling with Mantel. (Origin Series)
- Fireplace: Add Shiplap to Electric Fireplace Drywall. Floor-to-Ceiling.
- Landscape: FR - Replace Side Yard "Gray gravel" with "Sod & 1 Sprinkler Zone".
- Kitchen or Laundry Sink: Upgrade Faucet to Moen Arbor. SPECIFY Location(s) and Color (Kitchen or Laundry, and Black or Spot Resistant Stainless).
- Blinds: Faux Wood White. No optional Windows
- Add tile shower option (fiberglass pan with tile wall surround) with shampoo niche in bathroom. Add clear glass door. ****ESTIMATED****

MonteVista
HOMES

541-640-5225

In a continual effort to improve our product, MonteVista Homes reserves the right to change product design, features, materials, floor plans, specifications, prices and terms without prior notice. Square footage stated or implied are approximate. Images may be representative of future home and show what's possible not what's included. Seller is a licensed real estate broker in the State of Oregon. CCB#203709

