

# Feather Ridge

Astoria  
LOT 145

4011 SW Obsidian Pl. Redmond, OR 97756

🏠 2 Bedrooms

🚿 1 Bathrooms

🏠 880 Sq. Ft.

🚗 2 Car Garage

🏷️ 399,997

SUMMER SAVINGS HAPPENING NOW!



K - CRAFTSMAN ELEVATION



The Astoria is a highly efficient, low-maintenance home that makes the most of its 880 square feet. Its focused layout features a connected great room and kitchen, creating a practical hub for daily routines and relaxation. Two bedrooms and a single bath offer just the right amount of space for simple, easy living. Designed for buyers who value a compact footprint, the Astoria provides an approachable and welcoming foundation for a comfortable life.

MonteVista  
HOMES

541-640-5225

*In a continual effort to improve our product, MonteVista Homes reserves the right to change product design, features, materials, floor plans, specifications, prices and terms without prior notice. Square footage stated or implied are approximate. Images may be representative of future home and show what's possible not what's included. Seller is a licensed real estate broker in the State of Oregon. CCB#203709*



# Feather Ridge

Astoria  
LOT 145

4011 SW Obsidian Pl. Redmond, OR 97756

🛏 2 Bedrooms

🚿 1 Bathroom

🏠 880 Sq. Ft.

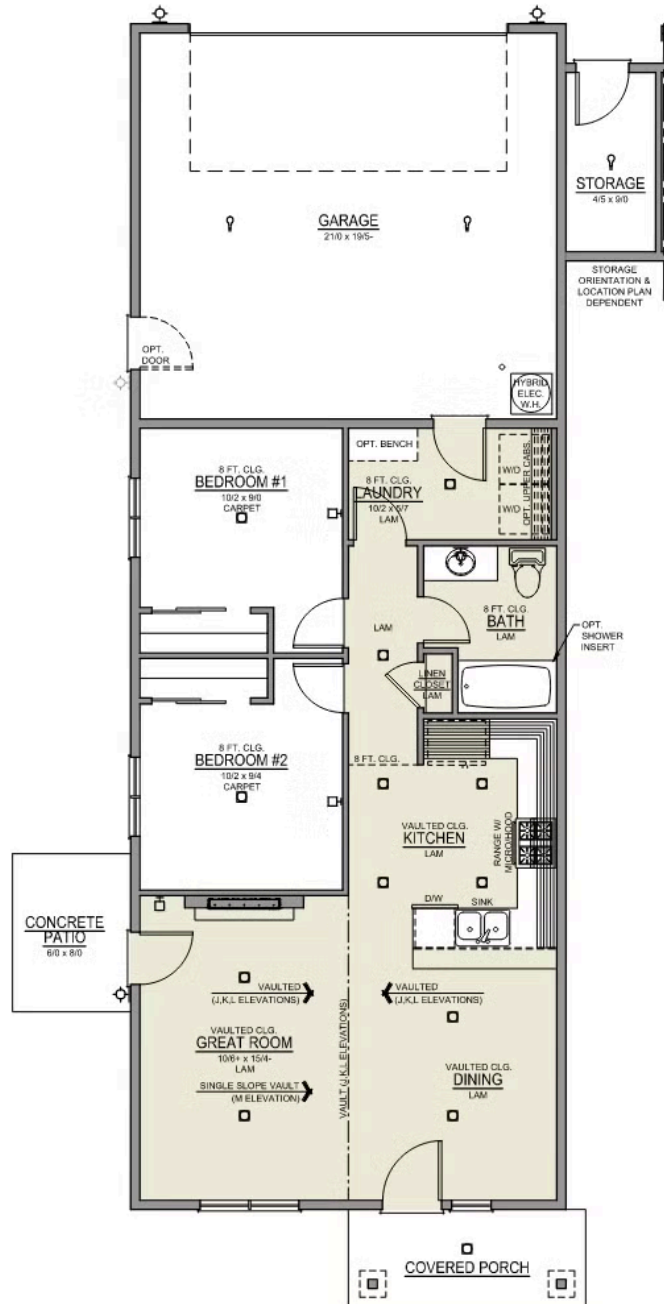
🚗 2 Car Garage

🏷 399,997

## Astoria 2-Car

880 Sq. Ft.

2 Bedroom, 1 Bath



# Feather Ridge


## OPTIONS

Astoria  
LOT 145

4011 SW Obsidian Pl. Redmond, OR 97756

 2 Bedrooms

 1 Bathrooms

 880 Sq. Ft.

 2 Car Garage

 399,997

- Interior Color Package: "Granite Shoreline". Painted Cabinets (All cabinets in house MUST be selected as "PAINTED")
- Exterior Color Package: Timberline Meadows
- Light Fixtures: Acadia
- Doors: Hardware Standard. "Cove" knobs / "Amador" front door handle.
- Electrical: Tech Package Pre Wire - Includes Panel, 110 outlet, 1 Dual Wall Plate (Coax & Ethernet) in Great Room
- Kitchen: 30" Cabinets. PAINTED Kitchen & Bathroom Cabinets.
- Cabinets: Specify Color of Knobs and Pulls
- Countertops: Quartz in Kitchen
- Backsplash: Quartz (6") in Kitchen.
- Garage: Garage Door Opener
- Garage: Garage Door Opener Wireless Keypad
- HVAC: System - Ductless Heating & AC "Mini Split" (Includes Prewire).

**MonteVista**  
HOMES

541-640-5225

*In a continual effort to improve our product, MonteVista Homes reserves the right to change product design, features, materials, floor plans, specifications, prices and terms without prior notice. Square footage stated or implied are approximate. Images may be representative of future home and show what's possible not what's included. Seller is a licensed real estate broker in the State of Oregon. CCB#203709*

