

# Feather Ridge

Astoria  
LOT None

4080 SW Obsidian Pl. Redmond, OR 97756

🏠 2 Bedrooms

🚿 1 Bathrooms

🏠 880 Sq. Ft.

🚗 2 Car Garage

🏠 None

MODEL HOME



ASTORIA TRADITIONAL ELEVATION



The Astoria is a highly efficient, low-maintenance home that makes the most of its 880 square feet. Its focused layout features a connected great room and kitchen, creating a practical hub for daily routines and relaxation. Two bedrooms and a single bath offer just the right amount of space for simple, easy living. Designed for buyers who value a compact footprint, the Astoria provides an approachable and welcoming foundation for a comfortable life.

MonteVista  
HOMES

541-640-5225

*In a continual effort to improve our product, MonteVista Homes reserves the right to change product design, features, materials, floor plans, specifications, prices and terms without prior notice. Square footage stated or implied are approximate. Images may be representative of future home and show what's possible not what's included. Seller is a licensed real estate broker in the State of Oregon. CCB#203709*



# Feather Ridge

Astoria  
LOT None

4080 SW Obsidian Pl. Redmond, OR 97756

2 Bedrooms

1 Bathrooms

880 Sq. Ft.

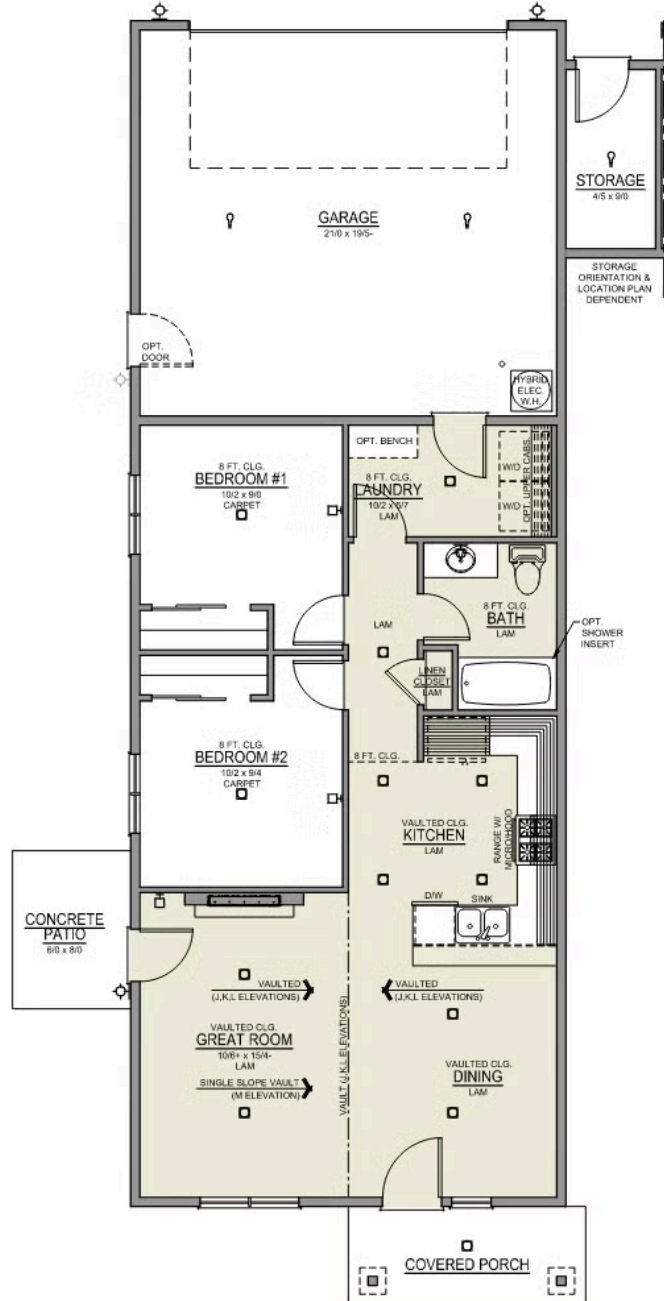
2 Car Garage

None

## Astoria 2-Car

880 Sq. Ft.

2 Bedroom, 1 Bath



# Feather Ridge


## OPTIONS

Astoria  
LOT None

4080 SW Obsidian Pl. Redmond, OR 97756

 2 Bedrooms

 1 Bathrooms

 880 Sq. Ft.

 2 Car Garage

 None

- Interior Color Package: "Horizon Pine"
- Exterior Color Package: Deschutes Frost
- Light Fixtures: Acadia
- Doors: Hardware Standard. "Cove" knobs / "Amador" front door handle.
- Bathroom: Upgraded finishes in SRS. Soaker Tub NOT included. All bathrooms. (Plumbing Fixtures, bath accessories and shower door hardware). \*SRS = Spot Resistant Stainless.
- Appliances Package: Washer & Dryer (Electric)
- Electrical: Tech Package Pre Wire - Includes Panel, 110 outlet, 1 Dual Wall Plate (Coax & Ethernet) in Great Room
- Appliances: Refrigerator - Side-By-Side, Water / Ice
- Electrical Fixtures: Ceiling Fan. Per Room (For Bedrooms 2, 4, or 3/Den). Wiring + Fixture + 1 Additional LED light.
- Doors: Exterior Front Door. CRAFTSMAN 6-8. Clear Glass (Premier & Origin Series Only)
- Garage: Garage Door Opener
- Garage: Garage Door Opener Wireless Keypad
- HVAC: Ductless Heating & AC - Mini Split
- Blinds: Faux Wood White. No optional Windows

**MonteVista**  
HOMES

541-640-5225

*In a continual effort to improve our product, MonteVista Homes reserves the right to change product design, features, materials, floor plans, specifications, prices and terms without prior notice. Square footage stated or implied are approximate. Images may be representative of future home and show what's possible not what's included. Seller is a licensed real estate broker in the State of Oregon. CCB#203709*

