

Feather Ridge

Astoria
LOT 156

4115 SW Obsidian Pl. Redmond, OR 97756

🏠 2 Bedrooms

🚿 1 Bathrooms

🏠 880 Sq. Ft.

🚗 2 Car Garage

🏷️ 390,000

\$20K TO USE YOUR WAY



The Astoria is a highly efficient, low-maintenance home that makes the most of its 880 square feet. Its focused layout features a connected great room and kitchen, creating a practical hub for daily routines and relaxation. Two bedrooms and a single bath offer just the right amount of space for simple, easy living. Designed for buyers who value a compact footprint, the Astoria provides an approachable and welcoming foundation for a comfortable life.

MonteVista
HOMES

541-640-5225

In a continual effort to improve our product, MonteVista Homes reserves the right to change product design, features, materials, floor plans, specifications, prices and terms without prior notice. Square footage stated or implied are approximate. Images may be representative of future home and show what's possible not what's included. Seller is a licensed real estate broker in the State of Oregon. CCB#203709



Feather Ridge

Astoria
LOT 156

4115 SW Obsidian Pl. Redmond, OR 97756

🛏 2 Bedrooms

🚿 1 Bathroom

🏠 880 Sq. Ft.

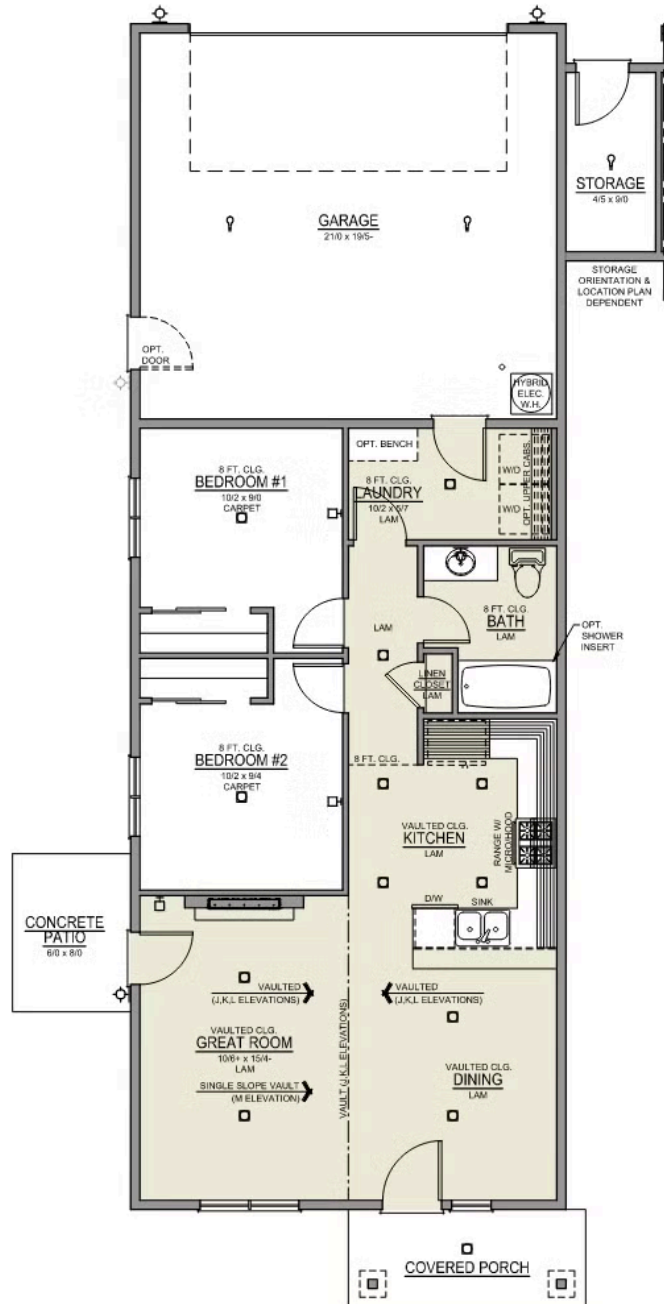
🚗 2 Car Garage

💰 390,000

Astoria 2-Car

880 Sq. Ft.

2 Bedroom, 1 Bath



Feather Ridge


OPTIONS

Astoria
LOT 156

4115 SW Obsidian Pl. Redmond, OR 97756

 2 Bedrooms

 1 Bathrooms

 880 Sq. Ft.

 2 Car Garage

 390,000

- Interior Color Package: "Crystal Heights". Painted Cabinets (All cabinets in house MUST be selected as "PAINTED")
- Exterior Color Package: Deschutes Frost
- Light Fixtures: Acadia
- Doors: Hardware Standard. "Cove" knobs / "Amador" front door handle.
- Bathroom: Shower Enclosure(s) Glass Color Choice
- Electrical: Tech Package Pre Wire - Includes Panel, 110 outlet, 1 Dual Wall Plate (Coax & Ethernet) in Great Room
- Kitchen: 30" Cabinets. PAINTED Kitchen & Bathroom Cabinets.
- Cabinets: Specify Color of Knobs and Pulls
- Counters: Quartz Counters and Backsplash in Kitchen
- Electrical: Ceiling Fan - PRE-WIRE ONLY. Per Room (For Bedroom 2, 4, or 3/Den) + 1 Additional LED light.
- Fencing: Add Stain - Single Sided. For Cedar, Dog-eared, Fencing and/or Gates, 6' tall. Choose Qty (in LF) & Specify Location.
- Fencing: Cedar, Dog-eared, 6' tall. (50 ft Min. Order)
- Fencing: 4' wide Walk Gate. Cedar, Dog-eared, 6' tall.
- Garage: Garage Door Opener
- Garage: Garage Door Opener Wireless Keypad
- HVAC: Ductless Heating & AC - Mini Split

MonteVista
HOMES

541-640-5225

In a continual effort to improve our product, MonteVista Homes reserves the right to change product design, features, materials, floor plans, specifications, prices and terms without prior notice. Square footage stated or implied are approximate. Images may be representative of future home and show what's possible not what's included. Seller is a licensed real estate broker in the State of Oregon. CCB#203709

