

# Feather Ridge

Charity Premier  
LOT 77

4098 SW Pumice Ave. Redmond, OR 97756

3 Bedrooms 2 Bathrooms 1,892 Sq. Ft. 2 Car Garage 589,997

UNDER CONSTRUCTION



V - FARMHOUSE



- Quartz Countertops throughout the home
- Free-Standing Soaking Tub
- Office, Study, or School Room

- Great Room with Fireplace
- Corner Kitchen Pantry
- Laundry/Mud room access from Garage

MonteVista  
HOMES

541-640-5225

*In a continual effort to improve our product, MonteVista Homes reserves the right to change product design, features, materials, floor plans, specifications, prices and terms without prior notice. Square footage stated or implied are approximate. Images may be representative of future home and show what's possible not what's included. Seller is a licensed real estate broker in the State of Oregon. CCB#203709*



Feather Ridge

Charity Premier  
LOT 77

4098 SW Pumice Ave. Redmond, OR 97756

3 Bedrooms

2 Bathrooms

1,892 Sq. Ft.

2 Car Garage

589,997

Charity 2-Car  
1,892 Sq. Ft.  
3 Bedroom, 2 Bath



# Feather Ridge

Charity Premier  
LOT 77

4098 SW Pumice Ave. Redmond, OR 97756

 3 Bedrooms

 2 Bathrooms

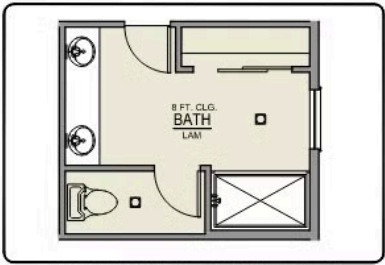
 1,892 Sq. Ft.

 2 Car Garage

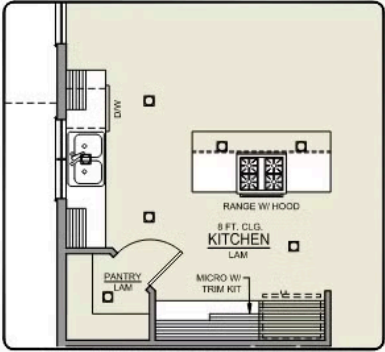
 589,997

Charity 2-Car

1,892 Sq. Ft.  
3 Bedroom, 2 Bath



PRIMARY BATH LINEN  
CLOSET OPTION



ISLAND HOOD OPTION

# Feather Ridge

## OPTIONS

Charity Premier  
LOT 77

4098 SW Pumice Ave. Redmond, OR 97756

 3 Bedrooms  2 Bathrooms  1,892 Sq. Ft.  2 Car Garage  589,997

- Interior Color Package: "Granite Shoreline". Comes with Stained Cabinets.
- Interior Walls/Trim: Walls - "Snowbound" , Trim - "Pure White"
- Exterior Color Package: Alpine Trail
- Light Fixtures: Acadia
- Doors: Upgrade Hardware. Ladera levers / Amador front door handle.
- Bathroom: Every Glass Shower Enclosure - Color Choice - "Clear Glass".
- Corner Lot Exterior Package: Includes Window trim on Corner Side, Flatwork and Corner Lot Landscaping up to the rear of the house.
- Electrical: Tech Package Pre Wire - Includes Panel, 110 outlet, 1 Dual Wall Plate (Coax & Ethernet) in Great Room
- Ceilings: (Premier Series Only) Vault in Great Room and Coffered Ceiling in Primary Bedroom.
- Kitchen: Island Range/Hood. 30" PAINTED Cabinets. All Kitchen & Bath Cabs Painted. Sliding Window over the sink. (Premier/Origin Series)
- Cabinets: Specify Color of Knobs and Pulls
- Counters: Quartz Counters and Backsplash (6") in Kitchen
- Counters: Quartz Counters and Backsplash in Guest Bath(s)
- Counters: Quartz Counters and Backsplash in Primary Bath
- Exterior Covered Patio: Rear - 14x10
- Electrical: Surface Mount LEDs. Add 2 for 4 total + Dimmer switch. For Primary Bedroom (N/A for Florence).
- Doors: Upgrade Interior Doors. 5-Panel. (Includes Fire Door).
- Flooring: Great Room - Wood Laminate (Casita Court)
- Flooring: Hallway Down & Linen Closets - Wood Laminate (Casita Court)
- Garage: Garage Door Opener
- Garage: Garage Door Opener Wireless Keypad
- HVAC: PreWire Only. For future Air Conditioner or Mini Split. Dedicated 220 Outlet.
- Fireplace: Electric Fireplace - Drywall Only w/ Mantle
- Kitchen: Farm Sink - Stainless Steel Single Bowl  
\*\*REQUIRES QUARTZ COUNTERTOPS\*\*
- Kitchen or Laundry: Upgrade Faucet to Moen Arbor. SPECIFY Location(s) and Color. ( Kitchen or Laundry. Black or Spot Resistant Stainless)

MonteVista  
HOMES

541-640-5225

*In a continual effort to improve our product, MonteVista Homes reserves the right to change product design, features, materials, floor plans, specifications, prices and terms without prior notice. Square footage stated or implied are approximate. Images may be representative of future home and show what's possible not what's included. Seller is a licensed real estate broker in the State of Oregon. CCB#203709*

