

Feather Ridge

Charity Premier
LOT 72

4156 SW Pumice Ave. Redmond, OR 97756

 3 Bedrooms  2 Bathrooms  1,892 Sq. Ft.  2 Car Garage  579,997

UNDER CONSTRUCTION



U - CRAFTSMAN



- Quartz Countertops throughout the home
- Free-Standing Soaking Tub
- Office, Study, or School Room

- Great Room with Fireplace
- Corner Kitchen Pantry
- Laundry/Mud room access from Garage

MonteVista
HOMES

541-640-5225

In a continual effort to improve our product, MonteVista Homes reserves the right to change product design, features, materials, floor plans, specifications, prices and terms without prior notice. Square footage stated or implied are approximate. Images may be representative of future home and show what's possible not what's included. Seller is a licensed real estate broker in the State of Oregon. CCB#203709



 3 Bedrooms

 2 Bathrooms

 1,892 Sq. Ft.

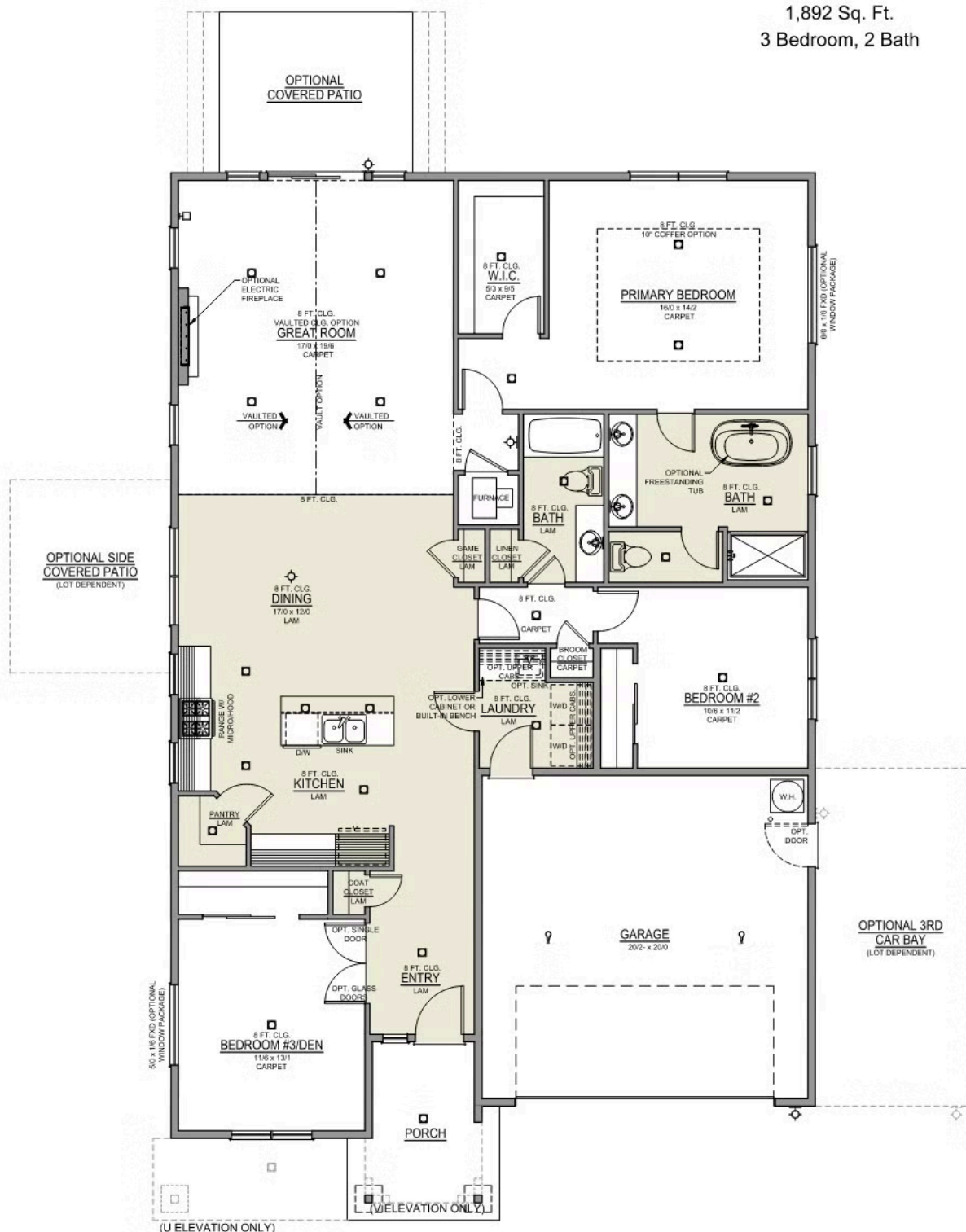
 2 Car Garage

 579,997

Charity 2-Car

1,892 Sq. Ft.

3 Bedroom, 2 Bath



Feather Ridge

Charity Premier
LOT 72

4156 SW Pumice Ave. Redmond, OR 97756

 3 Bedrooms

 2 Bathrooms

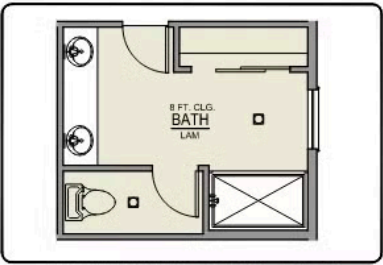
 1,892 Sq. Ft.

 2 Car Garage

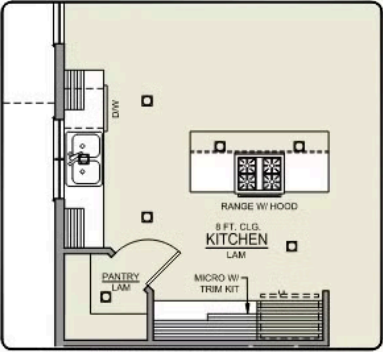
 579,997

Charity 2-Car

1,892 Sq. Ft.
3 Bedroom, 2 Bath



PRIMARY BATH LINEN
CLOSET OPTION



ISLAND HOOD OPTION

Feather Ridge

OPTIONS

Charity Premier
LOT 72

4156 SW Pumice Ave. Redmond, OR 97756

 3 Bedrooms  2 Bathrooms  1,892 Sq. Ft.  2 Car Garage  579,997

- Interior Color Package: "Crystal Heights". Comes with Stained Cabinets.
- Interior Walls/Trim: Walls - "Snowbound" , Trim - "Pure White"
- Exterior Color Package: Timberline Meadows
- Light Fixtures: Acadia
- Doors: Standard Hardware. Cove knobs / Amador front door handle.
- Bathroom: Every Glass Shower Enclosure - Color Choice - "Clear Glass".
- Electrical: Tech Package Pre Wire - Includes Panel, 110 outlet, 1 Dual Wall Plate (Coax & Ethernet) in Great Room
- Windows Package: Optional Windows
- Ceilings: (Premier Series Only) Vault in Great Room and Coffered Ceiling in Primary Bedroom.
- Kitchen: Base House (Premier/Origin). Wall Range, 30" STAINED Cabinets (All Kitchen & Bath Cabs Stained).
- Appliances: Replace Freestanding Wall Range with Slide in Gas Range (Only applicable for wall range kitchen configurations)
- Laundry Uppers: Add 30" STAINED Upper Cabs above Washer/Dryer. (Premier/Origin Series)
- Cabinets: Specify Color of Knobs and Pulls
- Counters: Quartz Counters and Backsplash (6") in Kitchen
- Counters: Quartz Counters and Backsplash in Guest Bath(s)
- Counters: Quartz Counters and Backsplash in Primary Bath
- Exterior Covered Patio: Rear - 12x10
- Kitchen: Pendant Lights over Kitchen Island - In place of recessed LED
- Electrical: Surface Mount LEDs. Add 2 for 4 total + Dimmer switch. For Primary Bedroom (N/A for Florence).
- Doors: Upgrade Kitchen Pantry Door. Glass - Frosted w/ Border.
- Garage: Garage Door Opener
- Garage: Garage Door Opener Wireless Keypad
- HVAC: PreWire Only. For future Air Conditioner or Mini Split. Dedicated 220 Outlet.
- Fireplace: Electric Fireplace - Drywall Only w/ Mantle
- Kitchen: Farm Sink - Stainless Steel Single Bowl
REQUIRES QUARTZ COUNTERTOPS
- Kitchen or Laundry: Upgrade Faucet to Moen Arbor. SPECIFY Location(s) and Color. (Kitchen or Laundry. Black or Spot Resistant Stainless)
- Bathroom: Freestanding Soaker Tub

MonteVista
HOMES

541-640-5225

In a continual effort to improve our product, MonteVista Homes reserves the right to change product design, features, materials, floor plans, specifications, prices and terms without prior notice. Square footage stated or implied are approximate. Images may be representative of future home and show what's possible not what's included. Seller is a licensed real estate broker in the State of Oregon. CCB#203709

