

Premier Collection

Charity

Feather Ridge

 3 Bedrooms  2 Bathrooms  1,892 Sq. Ft.  2 Car Garage  From: \$555,000



U - CRAFTSMAN ELEVATION



V - FARMHOUSE ELEVATION



Z - FARMHOUSE ELEVATION



The Charity stands out for how it uses its 1,892 square feet to balance openness with real-life versatility. A front bedroom sits just off the entry, making it a perfect home office, schoolroom, or dedicated play space separate from the main living areas. The second bedroom connects to the hallway bath, creating a comfortable second en suite for guests. At the heart of the home, the open kitchen, dining, and great room foster natural gatherings throughout the day. With its thoughtful layout and flexible spaces, the Charity supports a range of everyday moments with ease.

MonteVista
HOMES

541-640-5225

In a continual effort to improve our product, MonteVista Homes reserves the right to change product design, features, materials, floor plans, specifications, prices and terms without prior notice. Square footage stated or implied are approximate. Images may be representative of future home and show what's possible not what's included. Seller is a licensed real estate broker in the State of Oregon. CCB#203709



Premier Collection

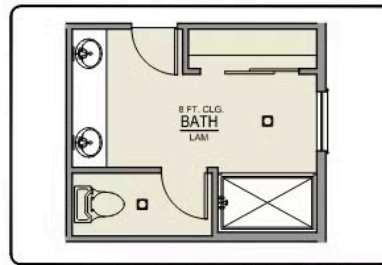
Charity

Feather Ridge

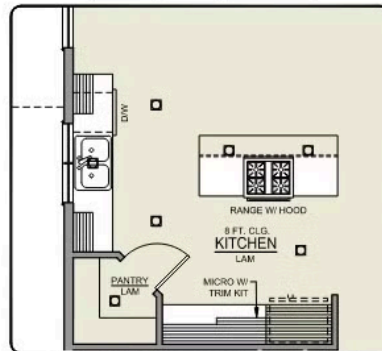
3 Bedrooms 2 Bathrooms 1,892 Sq. Ft. 2 Car Garage From: \$555,000

Charity 2-Car

1,892 Sq. Ft.
3 Bedroom, 2 Bath



PRIMARY BATH LINEN
CLOSET OPTION



ISLAND HOOD OPTION