

Feather Ridge

Charity
LOT 72

4156 SW Pumice Ave. Redmond, OR 97756

🏠 3 Bedrooms

🚿 2 Bathrooms

📏 1,892 Sq. Ft.

🚗 2 Car Garage

🏷️ 580,000

SUMMER SAVINGS HAPPENING NOW!



U - CRAFTSMAN ELEVATION



The Charity stands out for how it uses its 1,892 square feet to balance openness with real-life versatility. A front bedroom sits just off the entry, making it a perfect home office, schoolroom, or dedicated play space separate from the main living areas. The second bedroom connects to the hallway bath, creating a comfortable second en suite for guests. At the heart of the home, the open kitchen, dining, and great room foster natural gatherings throughout the day. With its thoughtful layout and flexible spaces, the Charity supports a range of everyday moments with ease.

MonteVista
HOMES

541-640-5225

In a continual effort to improve our product, MonteVista Homes reserves the right to change product design, features, materials, floor plans, specifications, prices and terms without prior notice. Square footage stated or implied are approximate. Images may be representative of future home and show what's possible not what's included. Seller is a licensed real estate broker in the State of Oregon. CCB#203709



Feather Ridge

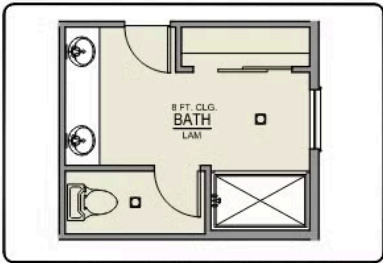
Charity
LOT 72

4156 SW Pumice Ave. Redmond, OR 97756

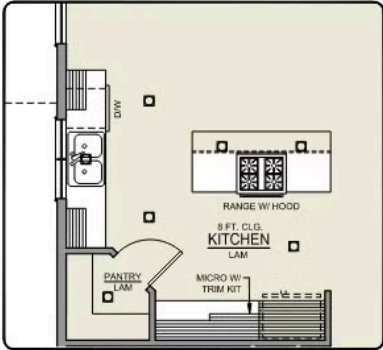
3 Bedrooms 2 Bathrooms 1,892 Sq. Ft. 2 Car Garage 580,000

Charity 2-Car

1,892 Sq. Ft.
3 Bedroom, 2 Bath



PRIMARY BATH LINEN CLOSET OPTION



ISLAND HOOD OPTION

Feather Ridge

OPTIONS

Charity
LOT 72

4156 SW Pumice Ave. Redmond, OR 97756

 3 Bedrooms

 2 Bathrooms

 1,892 Sq. Ft.

 2 Car Garage

 580,000

- Interior Color Package: "Crystal Heights". Comes with Stained Cabinets.
- Interior Walls/Trim: Walls - "Snowbound" , Trim - "Pure White"
- Exterior Color Package: Timberline Meadows
- Light Fixtures: Acadia
- Doors: Standard Hardware. Cove knobs / Amador front door handle.
- Bathroom: Every Glass Shower Enclosure - Color Choice - "Clear Glass".
- Electrical: Tech Package Pre Wire - Includes Panel, 110 outlet, 1 Dual Wall Plate (Coax & Ethernet) in Great Room
- Windows Package: Optional Windows
- Ceilings: (Premier Series Only) Vault in Great Room and Coffered Ceiling in Primary Bedroom.
- Kitchen: Base House (Premier/Origin). Wall Range, 30" STAINED Cabinets (All Kitchen & Bath Cabs Stained).
- Appliances: Replace Freestanding Wall Range with Slide in Gas Range (Only applicable for wall range kitchen configurations)
- Laundry Uppers: Add 30" STAINED Upper Cabs above Washer/Dryer. (Premier/Origin Series)
- Cabinets: Specify Color of Knobs and Pulls
- Counters: Quartz Counters and Backsplash (6") in Kitchen
- Counters: Quartz Counters and Backsplash in Guest Bath(s)
- Counters: Quartz Counters and Backsplash in Primary Bath
- Exterior Covered Patio: Rear - 12x10
- Kitchen: Pendant Lights over Kitchen Island - In place of recessed LED
- Electrical: Surface Mount LEDs. Add 2 for 4 total + Dimmer switch. For Primary Bedroom (N/A for Florence).
- Fencing: Add Stain - Double Sided. For Cedar, Dog-eared, Fencing and/or Gates, 6' tall. Choose Qty (in LF) & Specify Location.
- Fencing: Cedar, Dog-eared, 6' tall. (50 ft Min. Order)
- Fencing: 4' wide Walk Gate. Cedar, Dog-eared, 6' tall.
- Doors: Upgrade Kitchen Pantry Door. Glass - Frosted w/ Border.
- Garage: Garage Door Opener
- Garage: Garage Door Opener Wireless Keypad
- HVAC: Air Conditioner Only (Optional "PreWire" must be previously selected).
- HVAC: PreWire Only. For future Air Conditioner or Mini Split. Dedicated 220 Outlet.
- Fireplace: Electric Fireplace - Drywall Only w/ Mantle
- Landscape: Backyard Landscaping. Up to a 60-ft wide lot
- Kitchen: Farm Sink - Stainless Steel Single Bowl
REQUIRES QUARTZ COUNTERTOPS
- Kitchen or Laundry: Upgrade Faucet to Moen Arbor. SPECIFY Location(s) and Color. (Kitchen or Laundry. Black or Spot Resistant Stainless)
- Bathroom: Freestanding Soaker Tub

MonteVista
HOMES

541-640-5225

In a continual effort to improve our product, MonteVista Homes reserves the right to change product design, features, materials, floor plans, specifications, prices and terms without prior notice. Square footage stated or implied are approximate. Images may be representative of future home and show what's possible not what's included. Seller is a licensed real estate broker in the State of Oregon. CCB#203709

