

# Feather Ridge

Charlotte Premier  
LOT 73

4144 SW Pumice Ave. Redmond, OR 97756

4 Bedrooms 2 Bathrooms 1,701 Sq. Ft. 2 Car Garage 549,997

UNDER CONSTRUCTION



T - TRADITIONAL 2 CAR



- Kitchen Island with Sink
- Quartz Countertops throughout Home
- Open Great Room with Fireplace

- Kitchen Pantry
- Stainless Steel Kitchen Appliances
- Laundry Room

MonteVista  
HOMES

541-640-5225

In a continual effort to improve our product, MonteVista Homes reserves the right to change product design, features, materials, floor plans, specifications, prices and terms without prior notice. Square footage stated or implied are approximate. Images may be representative of future home and show what's possible not what's included. Seller is a licensed real estate broker in the State of Oregon. CCB#203709



Feather Ridge

Charlotte Premier  
LOT 73

4144 SW Pumice Ave. Redmond, OR 97756

4 Bedrooms

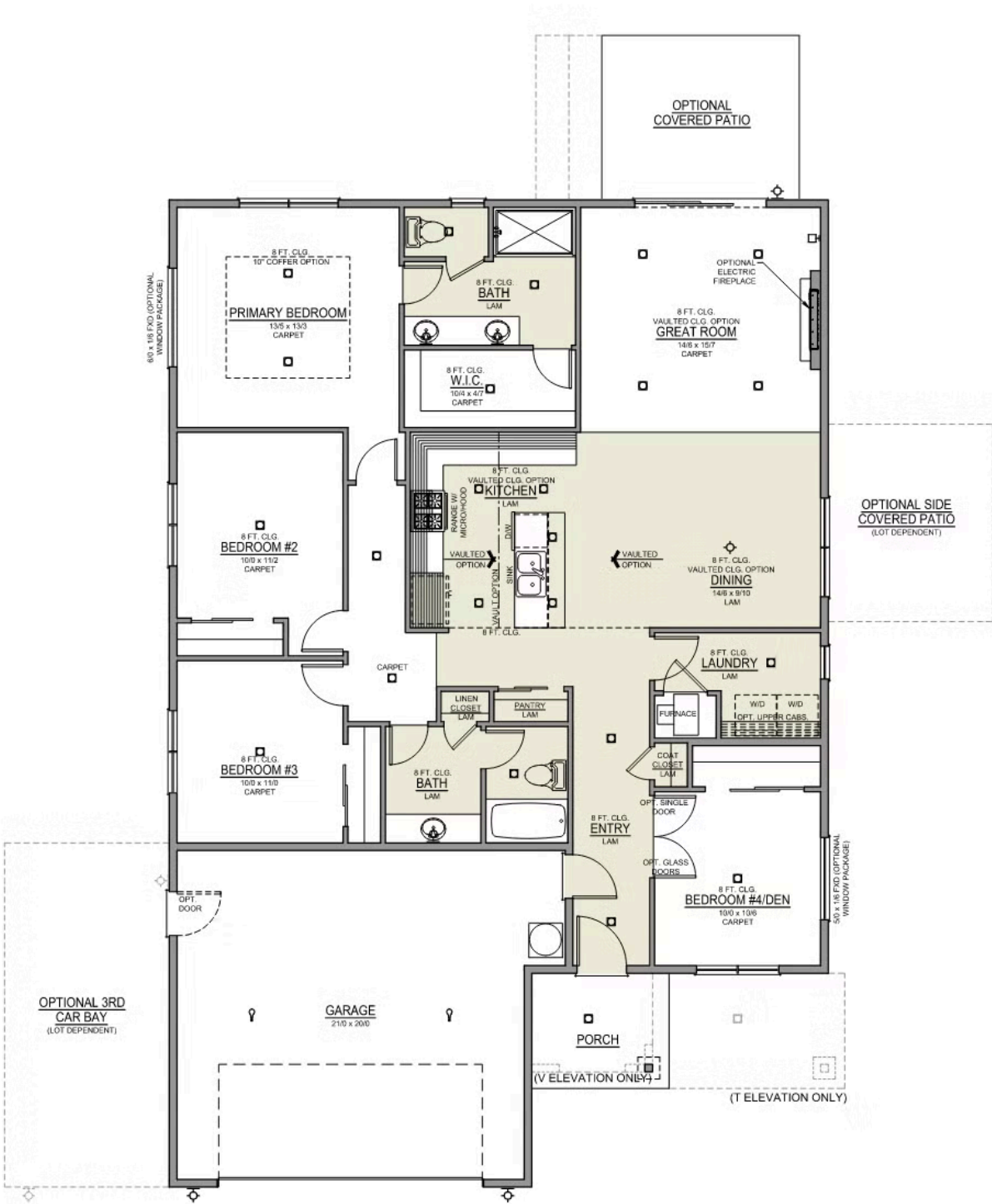
2 Bathrooms

1,701 Sq. Ft.

2 Car Garage

549,997

Charlotte 2-Car  
1,701 Sq. Ft.  
4 Bedroom, 2 Bath



# Feather Ridge

## OPTIONS

Charlotte Premier  
LOT 73

4144 SW Pumice Ave. Redmond, OR 97756

 4 Bedrooms  2 Bathrooms  1,701 Sq. Ft.  2 Car Garage  549,997

- Interior Color Package: "Mountain Vogue". Comes with Stained Cabinets.
- Interior Walls/Trim: Walls - "Pure White" , Trim - "Drift of Mist"
- Exterior Color Package: Spring Mist
- Light Fixtures: Acadia
- Doors: Standard Hardware. Cove knobs / Amador front door handle.
- Bathroom: Upgraded finishes in BLACK. Soaker Tub NOT included. All bathrooms. (Plumbing Fixtures, bath accessories and shower door hardware)
- Bathroom: Every Glass Shower Enclosure - Color Choice - "Clear Glass".
- Electrical: Tech Package Pre Wire - Includes Panel, 110 outlet, 1 Dual Wall Plate (Coax & Ethernet) in Great Room
- Windows Package: Optional Windows
- Ceilings: (Premier Series Only) Vault in Great Room and Coffered Ceiling in Primary Bedroom.
- Laundry Uppers: Add 30" PAINTED Upper Cabs above Washer/Dryer. (Premier/Origin Series)
- Kitchen: Wall Range. 36" PAINTED Cabinets. All Kitchen & Bath Cabs Painted. (Premier/Origin: Upgrade Kitchen to 36" Painted Cabs. Distinct: Upgrade Kitchen Cabs to Painted).
- Cabinets: Specify Color of Knobs and Pulls
- Counters: Quartz Counters and Backsplash (6") in Kitchen
- Counters: Quartz Counters and Backsplash in Guest Bath(s)
- Counters: Quartz Counters and Backsplash in Primary Bath
- Electrical: Surface Mount LEDs. Add 2 for 4 total + Dimmer switch. For Primary Bedroom (N/A for Florence).
- Flooring: Hallway Down & Linen Closets - Wood Laminate (Casita Court)
- Garage: Garage Door Opener
- Garage: Garage Door Opener Wireless Keypad
- HVAC: PreWire Only. For future Air Conditioner or Mini Split. Dedicated 220 Outlet.
- Fireplace: Electric Fireplace - Drywall Only w/ Mantle
- Kitchen: Farm Sink - Stainless Steel Single Bowl  
\*\*REQUIRES QUARTZ COUNTERTOPS\*\*
- Kitchen or Laundry: Upgrade Faucet to Moen Arbor. SPECIFY Location(s) and Color. ( Kitchen or Laundry. Black or Spot Resistant Stainless)

MonteVista  
HOMES

541-640-5225

*In a continual effort to improve our product, MonteVista Homes reserves the right to change product design, features, materials, floor plans, specifications, prices and terms without prior notice. Square footage stated or implied are approximate. Images may be representative of future home and show what's possible not what's included. Seller is a licensed real estate broker in the State of Oregon. CCB#203709*

