

Premier Collection

# Coming Spring 2026 Jefferson Premier

Feather Ridge

 4 Bedrooms

 2.5 Bathrooms

 1,761 Sq. Ft.

 2 Car Garage



T - TRADITIONAL



U - CRAFTSMAN



V - FARMHOUSE



- Guest Suite or Den on Main Level
- 9 Foot Ceilings on Main Level
- Kitchen Island with Sink
- Kitchen Corner Pantry

- Great Room with Fireplace
- Primary Suite with Walk-in Closet
- Quartz Countertops throughout Home
- Stainless Steel Appliances

**MonteVista**  
HOMES

541-640-5225

*In a continual effort to improve our product, MonteVista Homes reserves the right to change product design, features, materials, floor plans, specifications, prices and terms without prior notice. Square footage stated or implied are approximate. Images may be representative of future home and show what's possible not what's included. Seller is a licensed real estate broker in the State of Oregon. CCB#203709*



## Coming Spring 2026 Jefferson Premier

## Feather Ridge

 4 Bedrooms  2.5 Bathrooms  1,761 Sq. Ft.  2 Car Garage

## Jefferson 2-Car

1,761 Sq. Ft.

4 Bedroom, 2.5 Bath



## MAIN FLOOR

Premier Collection

# Coming Spring 2026 Jefferson Premier

Feather Ridge

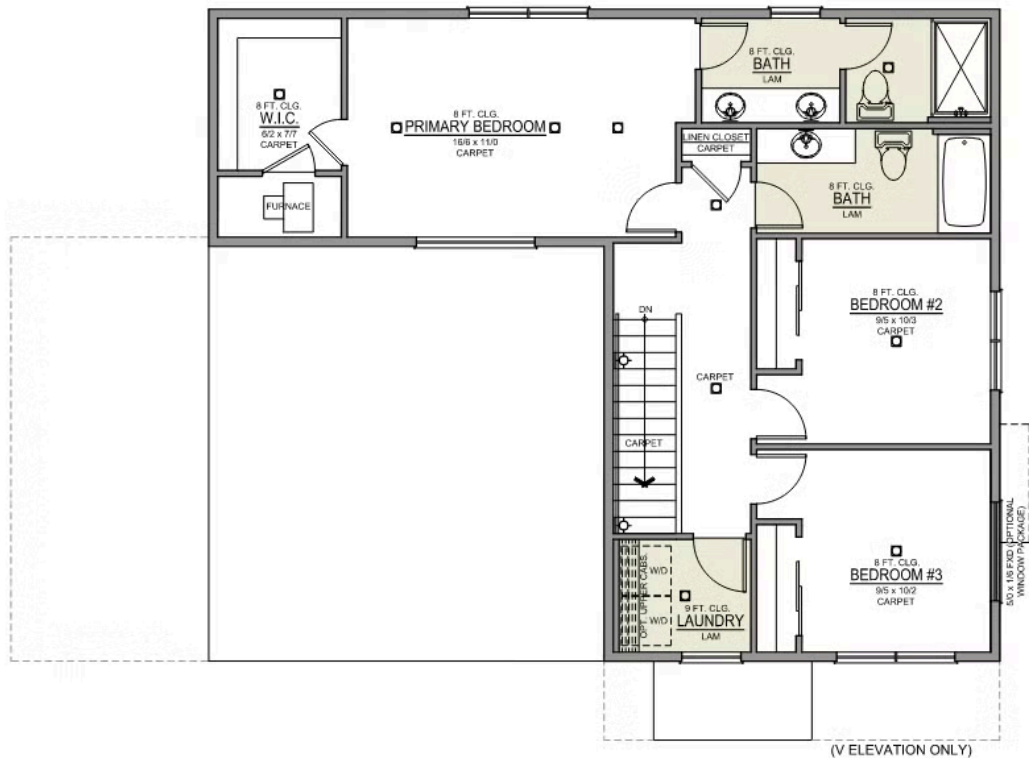
 4 Bedrooms

 2.5 Bathrooms

 1,761 Sq. Ft.

 2 Car Garage

Jefferson 2-Car  
1,761 Sq. Ft.  
4 Bedroom, 2.5 Bath



UPPER FLOOR