

Premier Collection

Coming Spring 2026 Thielsen Premier

Feather Ridge

 4 Bedrooms

 2.5 Bathrooms

 2,373 Sq. Ft.

 2 Car Garage



T - TRADITIONAL, 2 CAR



U - CRAFTSMAN, 2 CAR



V - FARMHOUSE, 2 CAR



- Primary Suite on Main Level with Walk-in Closet
- Great Room with Fireplace
- Upstairs Bonus Room / Loft
- Kitchen Island and Pantry
- 9 Foot Ceilings throughout Main Level
- Quartz Countertops throughout the Home
- Stainless Steel Appliances

MonteVista
HOMES

541-640-5225

In a continual effort to improve our product, MonteVista Homes reserves the right to change product design, features, materials, floor plans, specifications, prices and terms without prior notice. Square footage stated or implied are approximate. Images may be representative of future home and show what's possible not what's included. Seller is a licensed real estate broker in the State of Oregon. CCB#203709



Coming Spring 2026 Thielsen Premier

Feather Ridge

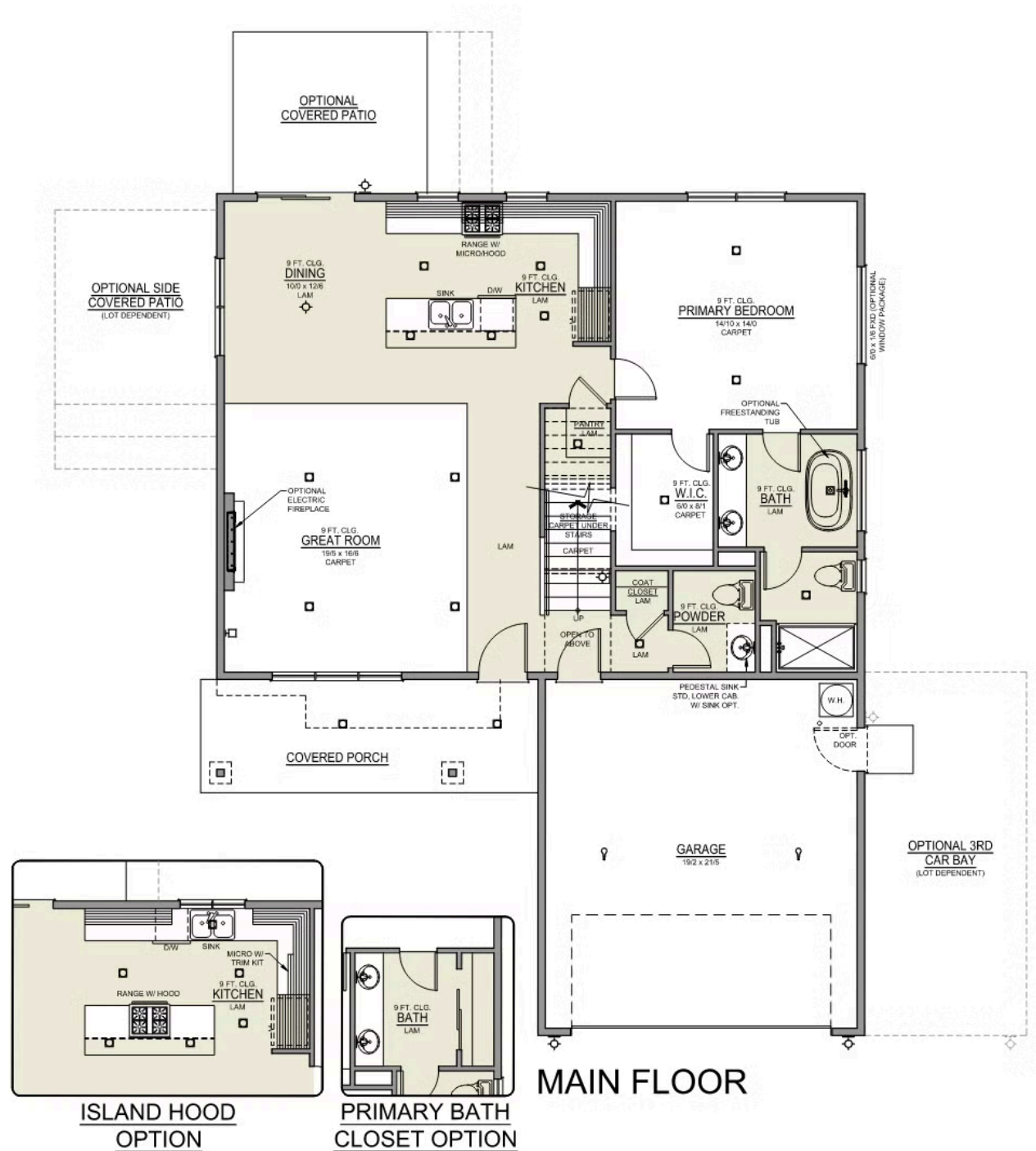
 4 Bedrooms

 2.5 Bathrooms

 2,373 Sq. Ft.

 2 Car Garage

Thielsen 2-Car
2,373 Sq. Ft.
4 Bedroom, 3 Bath



Coming Spring 2026 Thielsen Premier

Feather Ridge

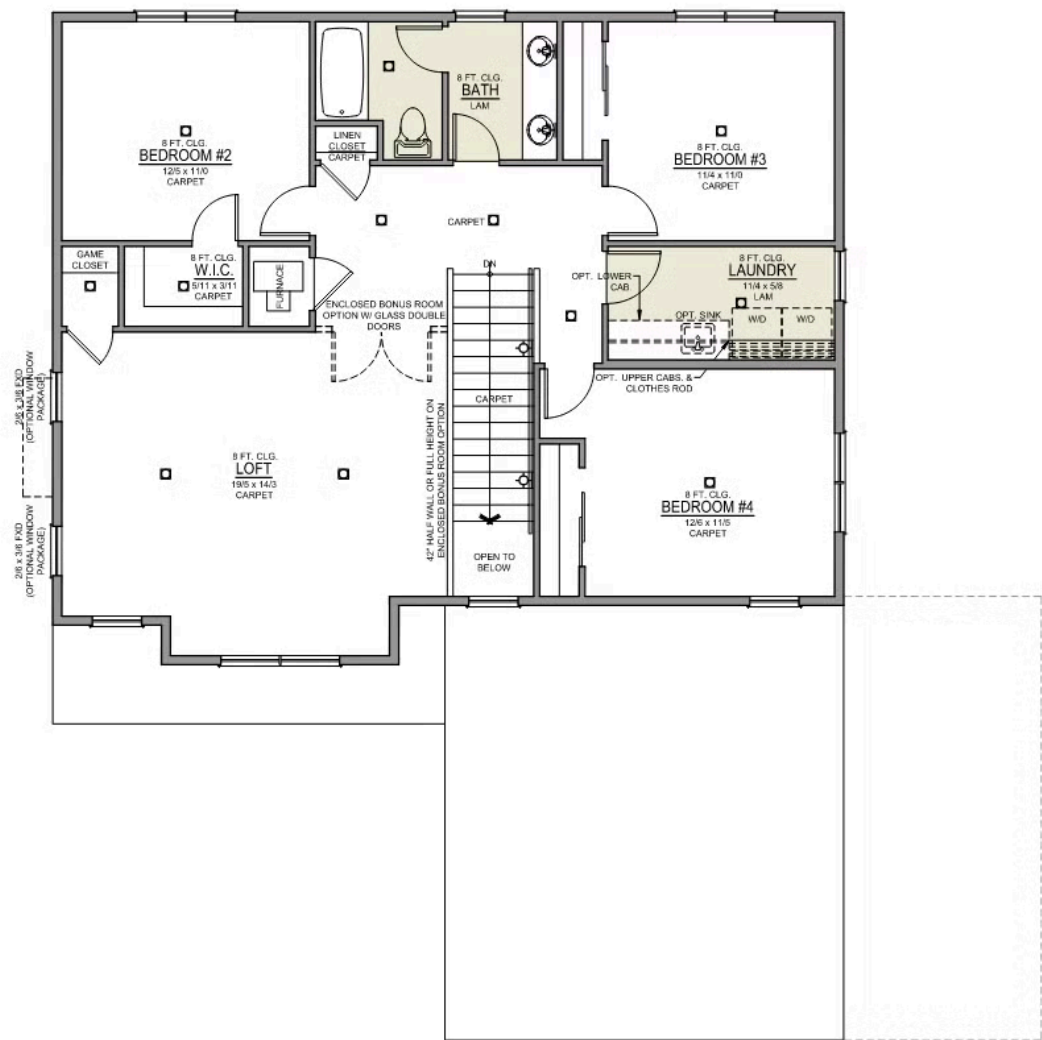
 4 Bedrooms

 2.5 Bathrooms

 2,373 Sq. Ft.

 2 Car Garage

Thielsen 2-Car
2,373 Sq. Ft.
4 Bedroom, 3 Bath



UPPER FLOOR