

Feather Ridge

Florence Origin
LOT 193

4022 SW Obsidian Ave. Redmond, OR 97756

3 Bedrooms 2 Bathrooms 1,102 Sq. Ft. 2 Car Garage 414,900

UNDER CONSTRUCTION



M- MODERN



- Open Concept Great Room
- Stainless Steel Kitchen Appliances
- Covered Front Porch
- Luxury Wood Laminate Flooring
- Luxury Vinyl Tile in Bath and Laundry Room
- Laundry/Mudroom Access from Garage
- Attached External Storage

MonteVista
HOMES

541-640-5225

In a continual effort to improve our product, MonteVista Homes reserves the right to change product design, features, materials, floor plans, specifications, prices and terms without prior notice. Square footage stated or implied are approximate. Images may be representative of future home and show what's possible not what's included. Seller is a licensed real estate broker in the State of Oregon. CCB#203709



Feather Ridge

Florence Origin
LOT 193

4022 SW Obsidian Ave. Redmond, OR 97756

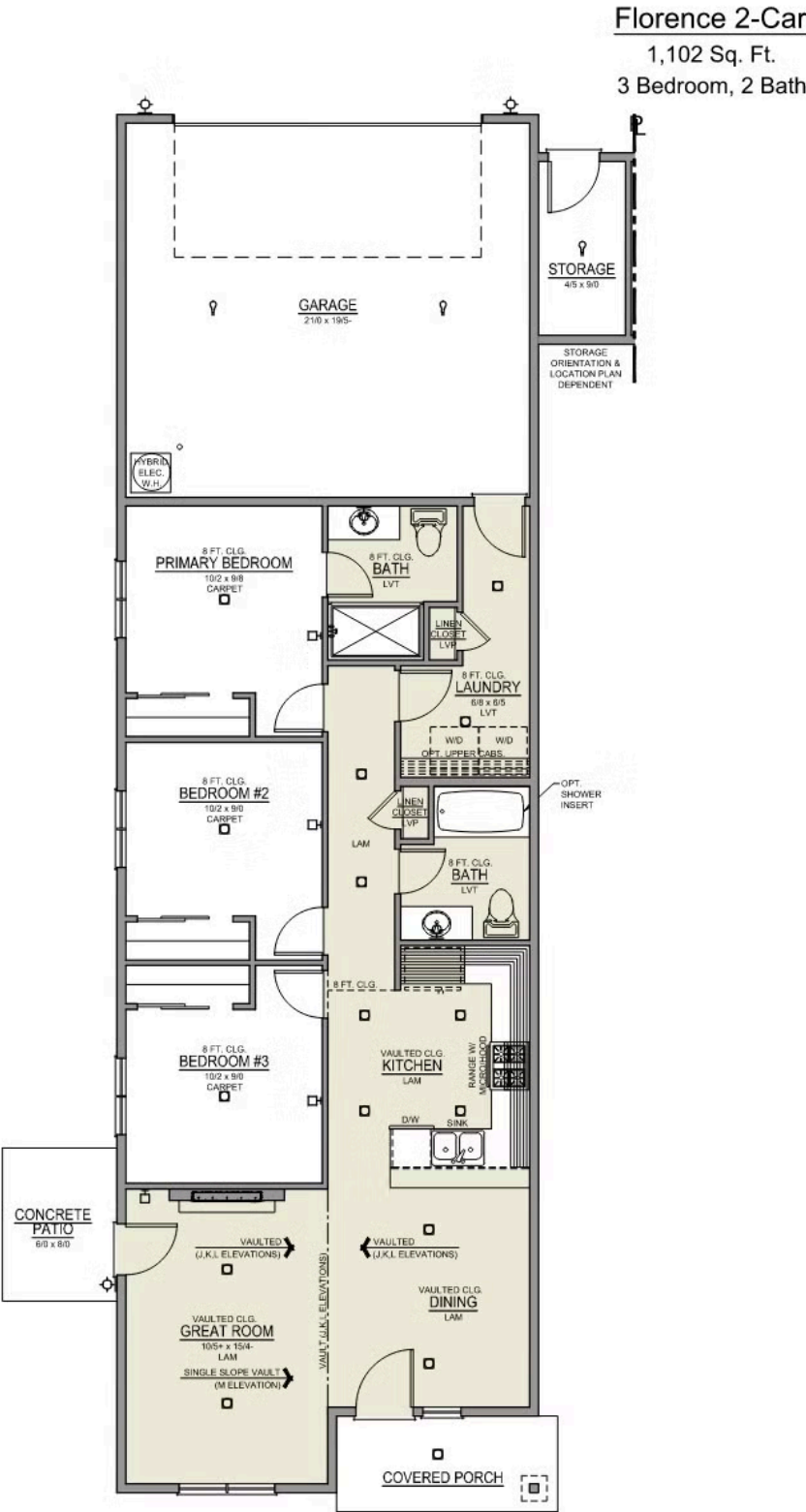
 3 Bedrooms

 2 Bathrooms

 1,102 Sq. Ft.

 2 Car Garage

 414,900



Feather Ridge

OPTIONS

Florence Origin
LOT 193

4022 SW Obsidian Ave. Redmond, OR 97756

 3 Bedrooms

 2 Bathrooms

 1,102 Sq. Ft.

 2 Car Garage

 414,900

- Interior Color Package: "Granite Shoreline". Painted Cabinets (All cabinets in house MUST be selected as "PAINTED")
 - Exterior Color Package: Rustic Woods
 - Light Fixtures: Acadia
 - Doors: Hardware Standard. "Cove" knobs / "Amador" front door handle.
 - Bathroom: Shower Enclosure Glass Color Choice
 - Electrical: Tech Package Pre Wire - Includes Panel, 110 outlet, 1 Dual Wall Plate (Coax & Ethernet) in Great Room
- Kitchen: 30" Cabinets. PAINTED Kitchen & Bathroom Cabinets.
 - Cabinets: Color of Knobs and Pulls
 - Counters: Quartz Counters and Backsplash in Kitchen
 - Electrical: Ceiling Fan - PRE-WIRE ONLY. Per Room (For Bedroom 2, 4, or 3/Den) + 1 Additional LED light.
 - Garage: Garage Door Opener
 - Garage: Garage Door Opener Wireless Keypad
 - HVAC: Ductless Heating & AC - Mini Split
 - Fireplace: Electric Fireplace - Drywall Floor-to-Ceiling with Mantel. (Origin Series)

MonteVista
HOMES

541-640-5225

In a continual effort to improve our product, MonteVista Homes reserves the right to change product design, features, materials, floor plans, specifications, prices and terms without prior notice. Square footage stated or implied are approximate. Images may be representative of future home and show what's possible not what's included. Seller is a licensed real estate broker in the State of Oregon. CCB#203709

