

Feather Ridge

Florence Origin
LOT 98

4085 SW Pumice Ave. Redmond, OR 97756

🏠 3 Bedrooms

🚿 2 Bathrooms

🏠 1,102 Sq. Ft.

🚗 2 Car Garage

🏷️ 420,000

UNDER CONSTRUCTION



L - FARMHOUSE ELEVATION



The Florence is an efficient, low-maintenance home that makes the most of its 1,102 square feet. A welcoming great room opens to the kitchen and dining space, creating a practical hub for meals, relaxation, and everyday connection. Three bedrooms sit close at hand, supporting easy single-level living without wasted space. With its compact footprint and intuitive design, the Florence keeps everyday routines effortless.

MonteVista
HOMES

541-640-5225

In a continual effort to improve our product, MonteVista Homes reserves the right to change product design, features, materials, floor plans, specifications, prices and terms without prior notice. Square footage stated or implied are approximate. Images may be representative of future home and show what's possible not what's included. Seller is a licensed real estate broker in the State of Oregon. CCB#203709



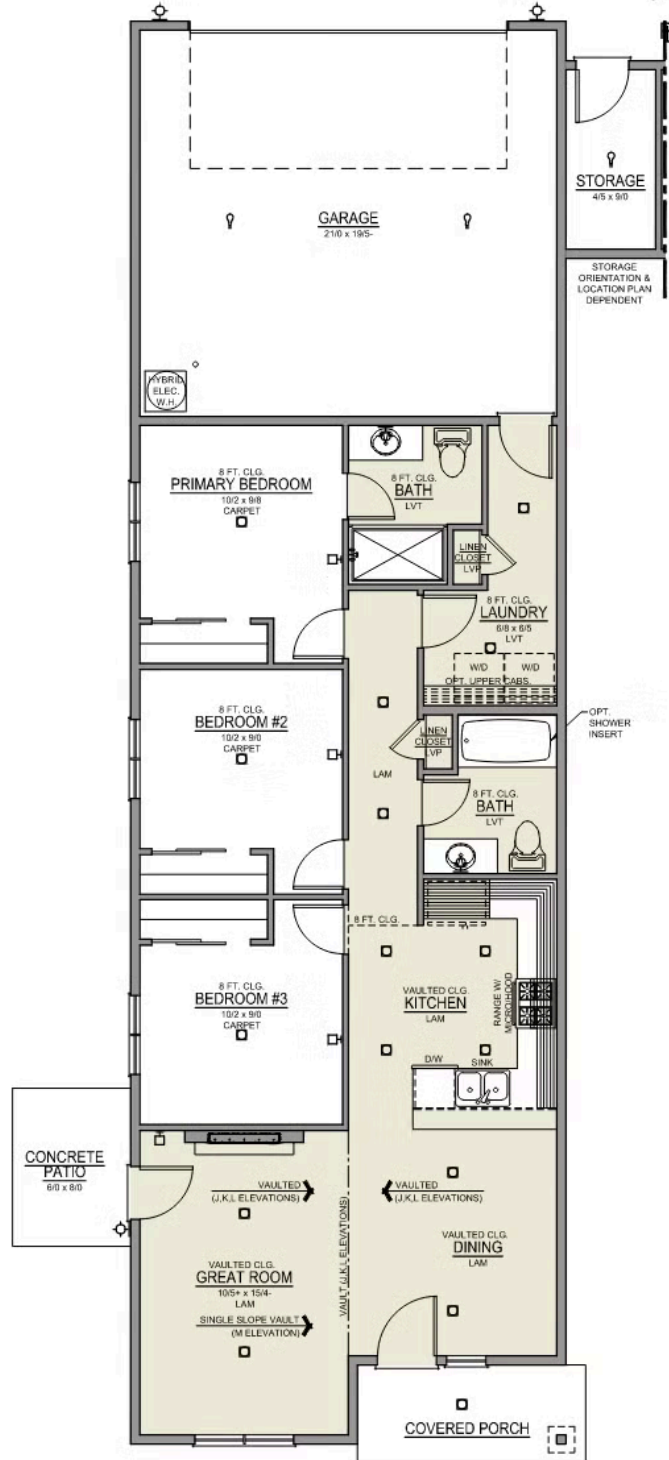
Feather Ridge

Florence Origin
LOT 98

4085 SW Pumice Ave. Redmond, OR 97756

3 Bedrooms 2 Bathrooms 1,102 Sq. Ft. 2 Car Garage 420,000

Florence 2-Car
1,102 Sq. Ft.
3 Bedroom, 2 Bath



Feather Ridge

OPTIONS

Florence Origin
LOT 98


4085 SW Pumice Ave. Redmond, OR 97756

 3 Bedrooms

 2 Bathrooms

 1,102 Sq. Ft.

 2 Car Garage

 420,000

- Interior Color Package: "Horizon Pine". Comes with Stained Cabinets.
- Interior Walls/Trim: Walls - "Snowbound" , Trim - "Pure White"
- Exterior Color Package: Rustic Woods
- Light Fixtures: Acadia
- Doors: Standard Hardware. Cove knobs / Amador front door handle.
- Bathroom: Upgraded finishes in BLACK. Soaker Tub NOT included. All bathrooms. (Plumbing Fixtures, bath accessories and shower door hardware)
- Bathroom: Every Glass Shower Enclosure - Color Choice - "Clear Glass".
- Electrical: Tech Package Pre Wire - Includes Panel, 110 outlet, 1 Dual Wall Plate (Coax & Ethernet) in Great Room
- Kitchen: Wall Range. 30" PAINTED Cabinets. All Kitchen & Bath Cabs Painted. (Premier/Origin: Upgrade Kitchen Cabs to Painted. Distinct: Not Available)
- Laundry Uppers: Add 30" PAINTED Upper Cabs above Washer/Dryer. (Premier/Origin Series)
- Cabinets: Specify Color of Knobs and Pulls
- Countertops: Quartz in Kitchen (Kitchen Backsplash to be chosen separately).
- Backsplash: Quartz (6") in Kitchen.
- Counters: Quartz Counters and Backsplash in Guest Bath(s)
- Counters: Quartz Counters and Backsplash in Primary Bath
- Electrical: Ceiling Fan - PRE-WIRE ONLY & Add 1 LED Light. Per Room (For bedrooms/dens with a single light configuration).
- Doors: Upgrade Front Door. CRAFTSMAN with upper Clear Glass window
- Garage: Garage Door Opener
- Garage: Garage Door Opener Wireless Keypad
- HVAC: System - Ductless Heating & AC "Mini Split" (Includes Prewire).
- Kitchen or Laundry: Upgrade Faucet to Moen Arbor. SPECIFY Location(s) and Color. (Kitchen or Laundry. Black or Spot Resistant Stainless)

MonteVista
HOMES

541-640-5225

In a continual effort to improve our product, MonteVista Homes reserves the right to change product design, features, materials, floor plans, specifications, prices and terms without prior notice. Square footage stated or implied are approximate. Images may be representative of future home and show what's possible not what's included. Seller is a licensed real estate broker in the State of Oregon. CCB#203709

