





# Feather Ridge

Florence Origin  
LOT 155

4111 SW Obsidian Pl. Redmond, OR 97756

 3 Bedrooms  2 Bathrooms  1,102 Sq. Ft.  2 Car Garage  417,900

UNDER CONSTRUCTION



L - FARMHOUSE



- Open Concept Great Room
- Stainless Steel Kitchen Appliances
- Covered Front Porch
- Luxury Wood Laminate Flooring
- Luxury Vinyl Tile in Bath and Laundry Room
- Laundry/Mudroom Access from Garage
- Attached External Storage

MonteVista  
HOMES

541-640-5225

*In a continual effort to improve our product, MonteVista Homes reserves the right to change product design, features, materials, floor plans, specifications, prices and terms without prior notice. Square footage stated or implied are approximate. Images may be representative of future home and show what's possible not what's included. Seller is a licensed real estate broker in the State of Oregon. CCB#203709*



# Feather Ridge

Florence Origin  
LOT 155

4111 SW Obsidian Pl. Redmond, OR 97756

 3 Bedrooms

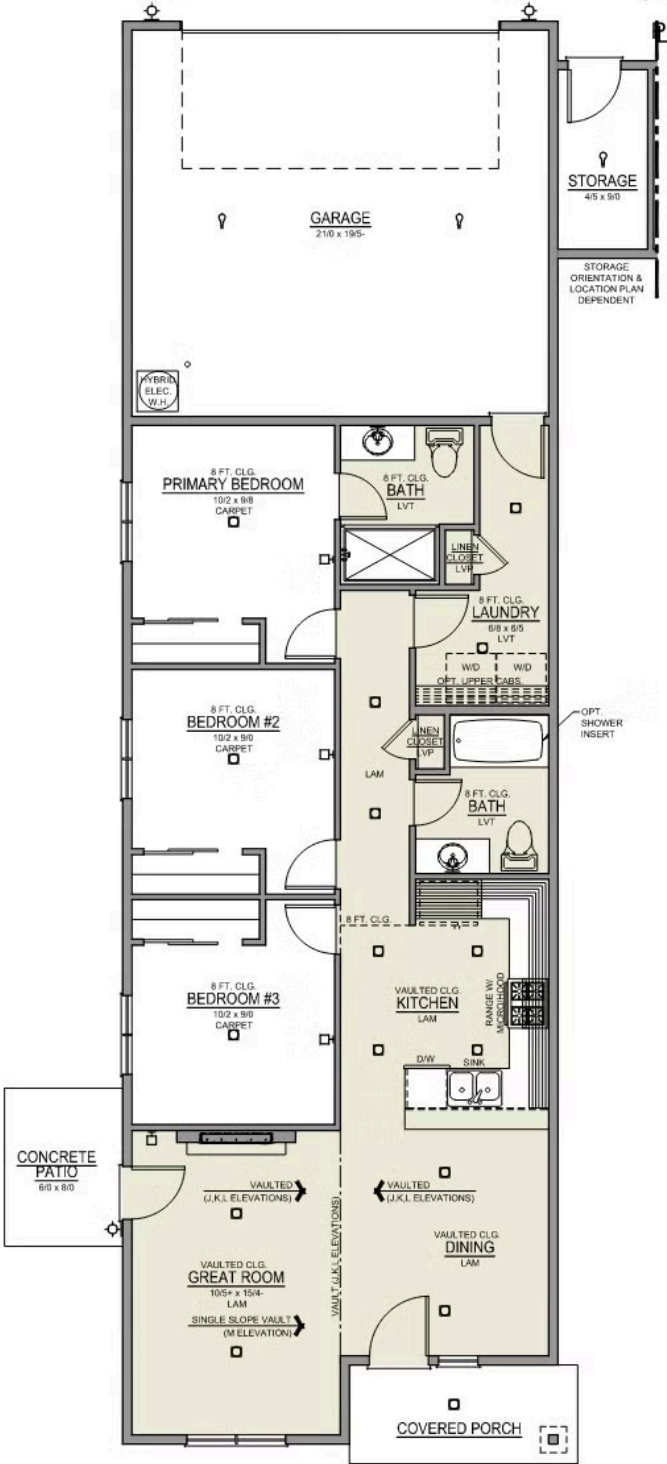
 2 Bathrooms

 1,102 Sq. Ft.

 2 Car Garage

 417,900

Florence 2-Car  
1,102 Sq. Ft.  
3 Bedroom, 2 Bath



# Feather Ridge

## OPTIONS

Florence Origin  
LOT 155

4111 SW Obsidian Pl. Redmond, OR 97756

 3 Bedrooms

 2 Bathrooms

 1,102 Sq. Ft.

 2 Car Garage

 417,900

- Interior Color Package: "Haven Valley". Painted Cabinets (All cabinets in house MUST be selected as "PAINTED")
  - Exterior Color Package: Alpine Trail
  - Light Fixtures: Acadia
  - Doors: Hardware Standard. "Cove" knobs / "Amador" front door handle.
  - Bathroom: Upgraded finishes in BLACK. Soaker Tub NOT included. All bathrooms. (Plumbing Fixtures, bath accessories and shower door hardware)
  - Bathroom: Shower Enclosure(s) Glass Color Choice
  - Electrical: Tech Package Pre Wire - Includes Panel, 110 outlet, 1 Dual Wall Plate (Coax & Ethernet) in Great Room
- Kitchen: 30" Cabinets. PAINTED Kitchen & Bathroom Cabinets.
  - Cabinets: Specify Color of Knobs and Pulls
  - Counters: Quartz Counters and Backsplash in Kitchen
  - Garage: Garage Door Opener
  - Garage: Garage Door Opener Wireless Keypad
  - HVAC: Ductless Heating & AC - Mini Split
  - Fireplace: Electric Fireplace - Drywall Floor-to-Ceiling with Mantel. (Origin Series)
  - Fireplace: Add Shiplap to Electric Fireplace Drywall. Floor-to-Ceiling.

MonteVista  
HOMES

541-640-5225

*In a continual effort to improve our product, MonteVista Homes reserves the right to change product design, features, materials, floor plans, specifications, prices and terms without prior notice. Square footage stated or implied are approximate. Images may be representative of future home and show what's possible not what's included. Seller is a licensed real estate broker in the State of Oregon. CCB#203709*

