

# Feather Ridge

Florence Origin  
LOT 187

4114 SW Obsidian Ave. Redmond, OR 97756

3 Bedrooms

2 Bathrooms

1,102 Sq. Ft.

2 Car Garage

399,900

UNDER CONSTRUCTION



K - CRAFTSMAN



- Open Concept Great Room
- Stainless Steel Kitchen Appliances
- Covered Front Porch
- Luxury Wood Laminate Flooring
- Luxury Vinyl Tile in Bath and Laundry Room
- Laundry/Mudroom Access from Garage
- Attached External Storage

MonteVista  
HOMES

541-640-5225

*In a continual effort to improve our product, MonteVista Homes reserves the right to change product design, features, materials, floor plans, specifications, prices and terms without prior notice. Square footage stated or implied are approximate. Images may be representative of future home and show what's possible not what's included. Seller is a licensed real estate broker in the State of Oregon. CCB#203709*



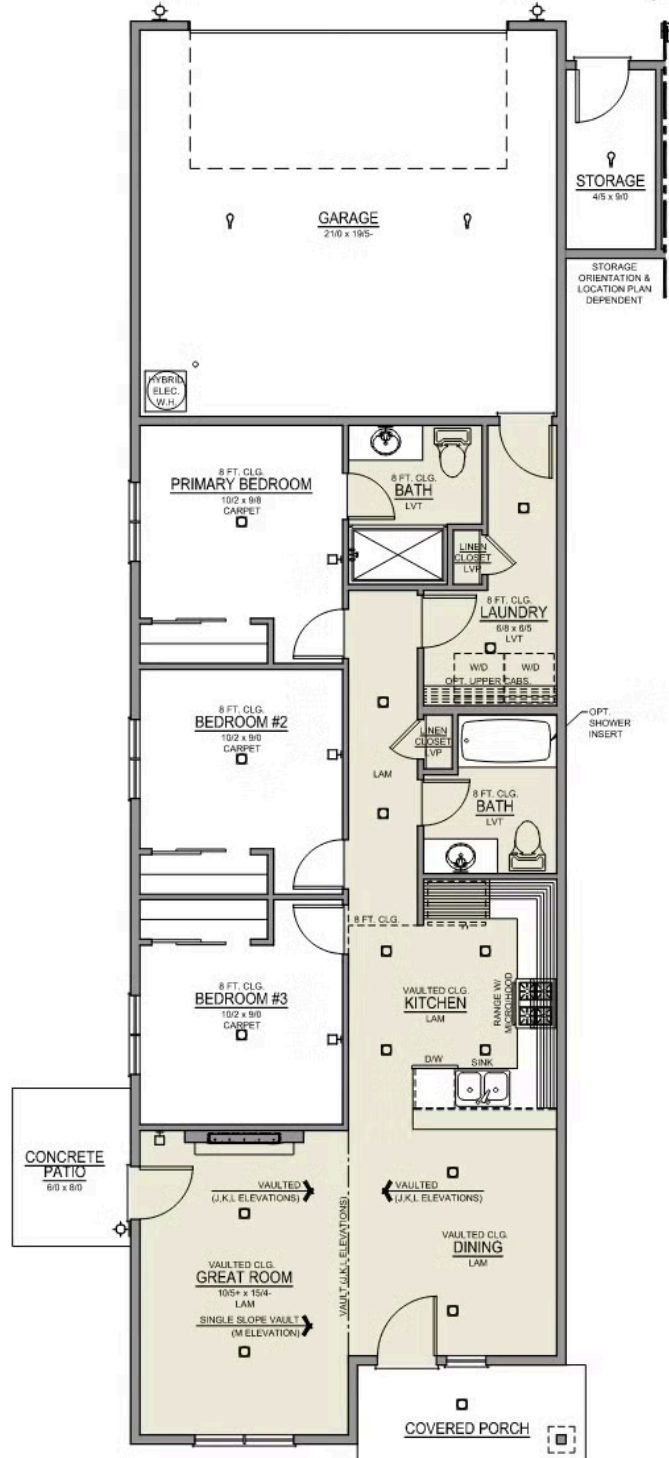
# Feather Ridge

Florence Origin  
LOT 187

4114 SW Obsidian Ave. Redmond, OR 97756

3 Bedrooms 2 Bathrooms 1,102 Sq. Ft. 2 Car Garage 399,900

Florence 2-Car  
1,102 Sq. Ft.  
3 Bedroom, 2 Bath



# Feather Ridge

## OPTIONS

Florence Origin  
LOT 187


4114 SW Obsidian Ave. Redmond, OR 97756

 3 Bedrooms

 2 Bathrooms

 1,102 Sq. Ft.

 2 Car Garage

 399,900

- Interior Color Package: "Mountain Vogue". Painted Cabinets (All cabinets in house MUST be selected as "PAINTED")
- Exterior Color Package: Cascade Falls
- Light Fixtures: Acadia
- Doors: Hardware Standard. "Cove" knobs / "Amador" front door handle.
- Bathroom: Shower Enclosure Glass Color Choice
- Electrical: Tech Package Pre Wire - Includes Panel, 110 outlet, 1 Dual Wall Plate (Coax & Ethernet) in Great Room
- Kitchen: 30" Cabinets. PAINTED Kitchen & Bathroom Cabinets.
- Cabinets: Color of Knobs and Pulls
- Garage: Garage Door Opener
- Garage: Garage Door Opener Wireless Keypad
- HVAC: System - Ductless Heating & AC "Mini Split" (Includes Prewire).

**MonteVista**  
HOMES

**541-640-5225**

*In a continual effort to improve our product, MonteVista Homes reserves the right to change product design, features, materials, floor plans, specifications, prices and terms without prior notice. Square footage stated or implied are approximate. Images may be representative of future home and show what's possible not what's included. Seller is a licensed real estate broker in the State of Oregon. CCB#203709*

