

Feather Ridge

Florence
LOT 195

3998 SW Obsidian Ave. Redmond, OR 97756

3 Bedrooms

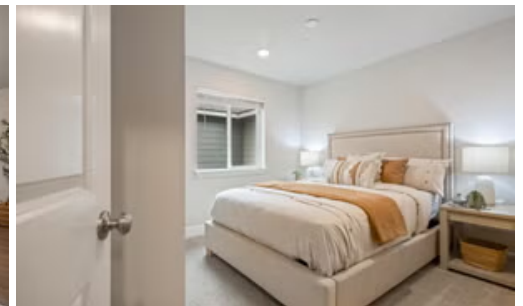
2 Bathrooms

1,102 Sq. Ft.

2 Car Garage

410,000

\$10K TO USE YOUR WAY



The Florence is an efficient, low-maintenance home that makes the most of its 1,102 square feet. A welcoming great room opens to the kitchen and dining space, creating a practical hub for meals, relaxation, and everyday connection. Three bedrooms sit close at hand, supporting easy single-level living without wasted space. With its compact footprint and intuitive design, the Florence keeps everyday routines effortless.

MonteVista
HOMES

541-640-5225

In a continual effort to improve our product, MonteVista Homes reserves the right to change product design, features, materials, floor plans, specifications, prices and terms without prior notice. Square footage stated or implied are approximate. Images may be representative of future home and show what's possible not what's included. Seller is a licensed real estate broker in the State of Oregon. CCB#203709



Feather Ridge

Florence
LOT 195

3998 SW Obsidian Ave. Redmond, OR 97756

3 Bedrooms

2 Bathrooms

1,102 Sq. Ft.

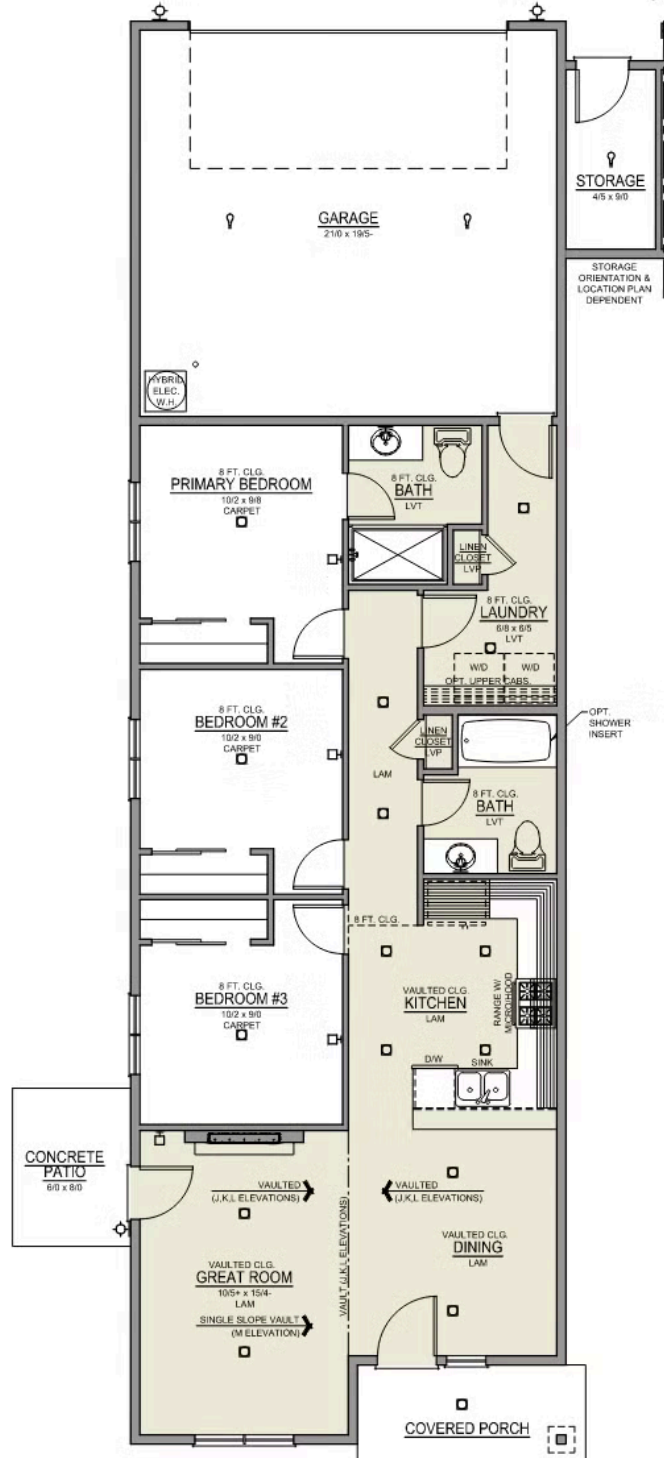
2 Car Garage

410,000

Florence 2-Car

1,102 Sq. Ft.

3 Bedroom, 2 Bath



Feather Ridge

OPTIONS

Florence
LOT 195

3998 SW Obsidian Ave. Redmond, OR 97756

 3 Bedrooms

 2 Bathrooms

 1,102 Sq. Ft.

 2 Car Garage

 410,000

- Interior Color Package: "Horizon Pine"
- Exterior Color Package: Deschutes Frost
- Light Fixtures: Acadia
- Doors: Hardware Standard. "Cove" knobs / "Amador" front door handle.
- Bathroom: Shower Enclosure Glass Color Choice
- Electrical: Tech Package Pre Wire - Includes Panel, 110 outlet, 1 Dual Wall Plate (Coax & Ethernet) in Great Room
- Appliances: Refrigerator - Side-By-Side, Water / Ice
- Cabinets: Color of Knobs and Pulls
- Electrical: Ceiling Fan - PRE-WIRE ONLY. Per Room (For Bedroom 2, 4, or 3/Den) + 1 Additional LED light.
- Garage: Garage Door Opener
- Garage: Garage Door Opener Wireless Keypad
- HVAC: Ductless Heating & AC - Mini Split
- HVAC: Air Conditioner PreWire. Dedicated 220 Outlet (For AC or MiniSplit)
- Fireplace: Electric Fireplace - Drywall Floor-to-Ceiling with Mantel. (Origin Series)
- Fireplace: Add Shiplap to Electric Fireplace Drywall. Floor-to-Ceiling.
- Blinds: Faux Wood White. No optional Windows

MonteVista
HOMES

541-640-5225

In a continual effort to improve our product, MonteVista Homes reserves the right to change product design, features, materials, floor plans, specifications, prices and terms without prior notice. Square footage stated or implied are approximate. Images may be representative of future home and show what's possible not what's included. Seller is a licensed real estate broker in the State of Oregon. CCB#203709

