






Feather Ridge

Hope Premier
LOT 70

4174 SW Pumice Ave. Redmond, OR 97756

 4 Bedrooms  2 Bathrooms  1,906 Sq. Ft.  3 Car Garage  609,997

UNDER CONSTRUCTION



T - TRADITIONAL



- Kitchen Island with Sink
- Kitchen Pantry
- Great Room with Fireplace
- Quartz Countertops throughout Home
- Free Standing Tub
- Primary Bedroom with Walk-in Closet
- Stainless Steel Appliances

MonteVista
HOMES

541-640-5225

In a continual effort to improve our product, MonteVista Homes reserves the right to change product design, features, materials, floor plans, specifications, prices and terms without prior notice. Square footage stated or implied are approximate. Images may be representative of future home and show what's possible not what's included. Seller is a licensed real estate broker in the State of Oregon. CCB#203709



Feather Ridge

Hope Premier
LOT 70

4174 SW Pumice Ave. Redmond, OR 97756

4 Bedrooms

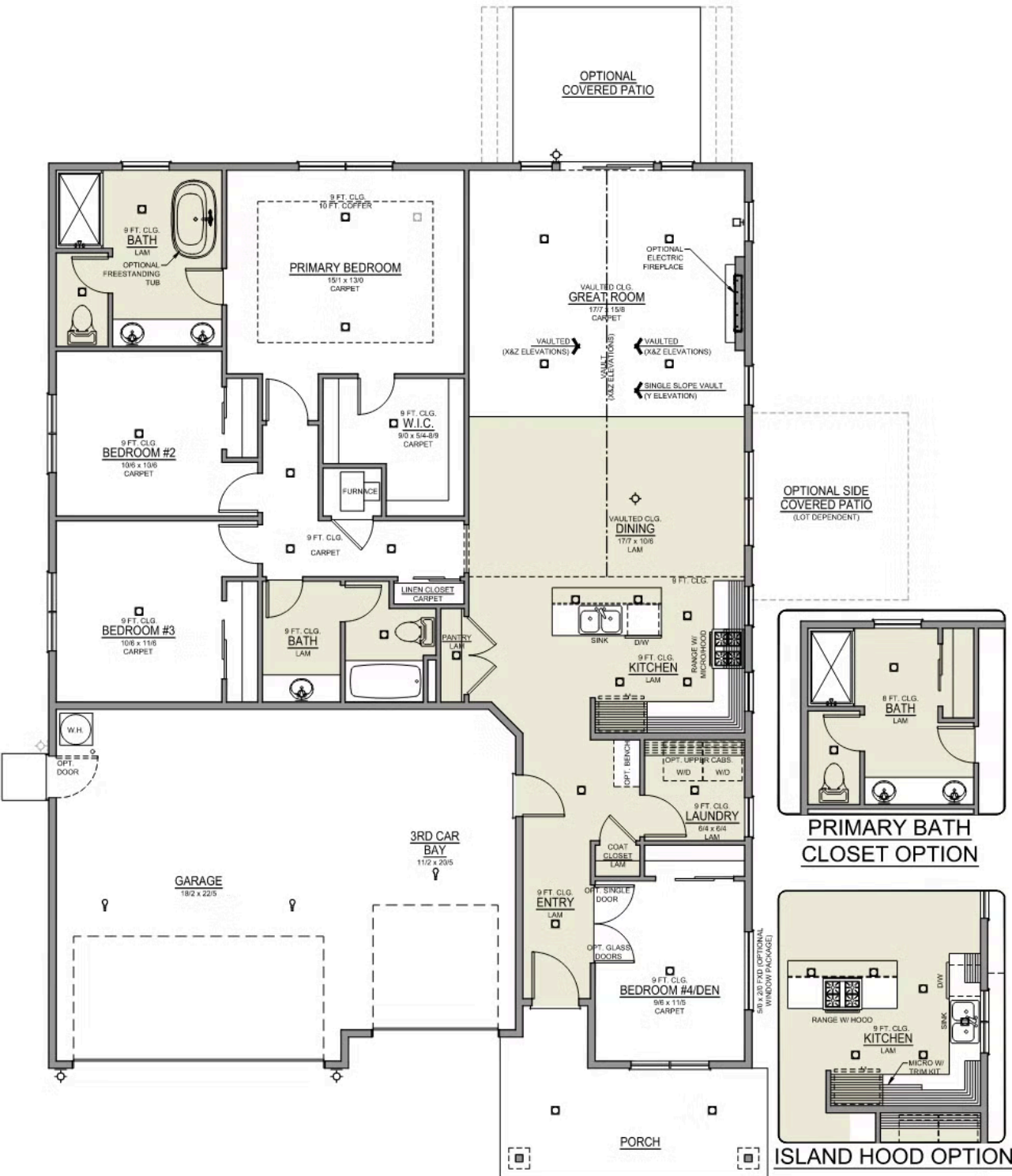
2 Bathrooms

1,906 Sq. Ft.

3 Car Garage

609,997

Hope 3-Car
1,906 Sq. Ft.
4 Bedroom, 2 Bath





Feather Ridge

OPTIONS

Hope Premier
LOT 70

4174 SW Pumice Ave. Redmond, OR 97756

 4 Bedrooms  2 Bathrooms  1,906 Sq. Ft.  3 Car Garage  609,997

- Interior Color Package: "Haven Valley". Comes with Stained Cabinets.
- Interior Walls/Trim: Walls - "Pure White" , Trim - "Drift of Mist"
- Exterior Color Package: Spring Mist
- Light Fixtures: Acadia
- Doors: Standard Hardware. Cove knobs / Amador front door handle.
- Bathroom: Upgrade finishes to BLACK. Soaker Tub INCLUDED. All bathrooms. (Plumbing Fixtures, bath accessories and shower door hardware)
- Bathroom: Every Glass Shower Enclosure - Color Choice - "Obscure Glass".
- Electrical: Tech Package Pre Wire - Includes Panel, 110 outlet, 1 Dual Wall Plate (Coax & Ethernet) in Great Room
- Windows Package: Optional Windows
- Ceilings: (Premier Series Only) Vault in Great Room and Coffered Ceiling in Primary Bedroom.
- Kitchen: Island Range/Hood. 30" PAINTED Cabinets. All Kitchen & Bath Cabs Painted. Sliding Window over the sink. (Premier/Origin Series)
- Laundry Uppers: Add 30" PAINTED Upper Cabs above Washer/Dryer. (Premier/Origin Series)
- Cabinets: Specify Color of Knobs and Pulls
- Kitchen: Full Height Tile Backsplash
- Counters: Quartz Counters and Backsplash (6") in Kitchen
- Counters: Quartz Counters and Backsplash in Guest Bath(s)
- Counters: Quartz Counters and Backsplash in Primary Bath
- Exterior Covered Patio: Rear - 14x10
- Electrical: Surface Mount LEDs. Add 2 for 4 total + Dimmer switch. For Primary Bedroom (N/A for Florence).
- Doors: Upgrade Front Door. CRAFTSMAN with upper Clear Glass window
- Flooring: Great Room - Wood Laminate (Casita Court)
- Flooring: Hallway Down & Linen Closets - Wood Laminate (Casita Court)
- Garage: Garage Door Glass. Double Car Door
- Garage: Garage Door Opener
- Garage: Garage Door Opener Wireless Keypad
- HVAC: PreWire Only. For future Air Conditioner or Mini Split. Dedicated 220 Outlet.
- Fireplace: Electric Fireplace - Drywall Only w/ Mantle
- Exterior: Stone on all Front Column(s)
- Exterior: Stone Garage Wing Wall
- Kitchen: Farm Sink - Stainless Steel Single Bowl
REQUIRES QUARTZ COUNTERTOPS
- Kitchen or Laundry: Upgrade Faucet to Moen Arbor. SPECIFY Location(s) and Color. (Kitchen or Laundry. Black or Spot Resistant Stainless)
- Bathroom: Freestanding Soaker Tub

MonteVista
HOMES

541-640-5225

In a continual effort to improve our product, MonteVista Homes reserves the right to change product design, features, materials, floor plans, specifications, prices and terms without prior notice. Square footage stated or implied are approximate. Images may be representative of future home and show what's possible not what's included. Seller is a licensed real estate broker in the State of Oregon. CCB#203709

