

# Feather Ridge

Hope  
LOT 70

4174 SW Pumice Ave. Redmond, OR 97756

🏠 4 Bedrooms

🚿 2 Bathrooms

🏠 1,906 Sq. Ft.

🚗 3 Car Garage

🏷️ 610,000

UNDER CONSTRUCTION



T - TRADITIONAL ELEVATION



The Hope brings spacious single-level living together with thoughtful flexibility and a rare four-bedroom layout. A front bedroom doubles beautifully as a home office or schoolroom, set apart just enough to create focus and calm. At the center of the home, the open kitchen, dining, and great room offer warm, easy flow for everyday living. The three-car garage adds welcome room for storage, gear, or hobbies. With its generous footprint and intuitive design, the Hope supports those who want comfort, connection, and a home that lives simply and naturally.

**MonteVista**  
HOMES

541-640-5225

*In a continual effort to improve our product, MonteVista Homes reserves the right to change product design, features, materials, floor plans, specifications, prices and terms without prior notice. Square footage stated or implied are approximate. Images may be representative of future home and show what's possible not what's included. Seller is a licensed real estate broker in the State of Oregon. CCB#203709*



# Feather Ridge

Hope  
LOT 70

4174 SW Pumice Ave. Redmond, OR 97756

4 Bedrooms

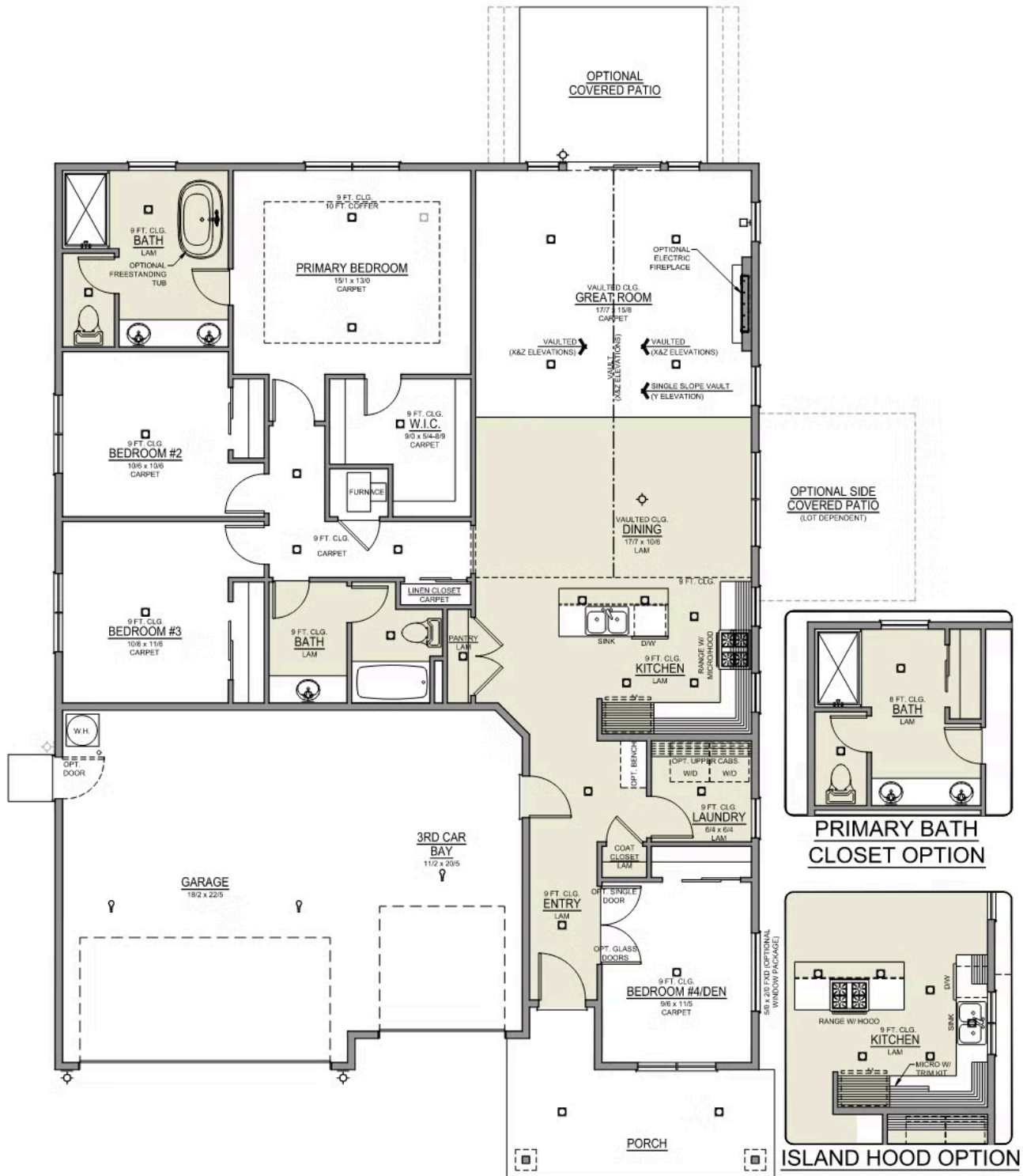
2 Bathrooms

1,906 Sq. Ft.

3 Car Garage

610,000

**Hope 3-Car**  
1,906 Sq. Ft.  
4 Bedroom, 2 Bath



# Feather Ridge


## OPTIONS

Hope  
LOT 70

4174 SW Pumice Ave. Redmond, OR 97756

 4 Bedrooms

 2 Bathrooms

 1,906 Sq. Ft.

 3 Car Garage

 610,000

- Interior Color Package: "Haven Valley". Comes with Stained Cabinets.
- Interior Walls/Trim: Walls - "Pure White" , Trim - "Drift of Mist"
- Exterior Color Package: Spring Mist
- Light Fixtures: Acadia
- Doors: Standard Hardware. Cove knobs / Amador front door handle.
- Bathroom: Upgrade finishes to BLACK. Soaker Tub INCLUDED. All bathrooms. (Plumbing Fixtures, bath accessories and shower door hardware)
- Bathroom: Every Glass Shower Enclosure - Color Choice - "Obscure Glass".
- Electrical: Tech Package Pre Wire - Includes Panel, 110 outlet, 1 Dual Wall Plate (Coax & Ethernet) in Great Room
- Windows Package: Optional Windows
- Ceilings: (Premier Series Only) Vault in Great Room and Coffered Ceiling in Primary Bedroom.
- Kitchen: Island Range/Hood. 30" PAINTED Cabinets. All Kitchen & Bath Cabs Painted. Sliding Window over the sink. (Premier/Origin Series)
- Laundry Uppers: Add 30" PAINTED Upper Cabs above Washer/Dryer. (Premier/Origin Series)
- Cabinets: Specify Color of Knobs and Pulls
- Kitchen: Full Height Tile Backsplash
- Counters: Quartz Counters and Backsplash (6") in Kitchen
- Counters: Quartz Counters and Backsplash in Guest Bath(s)
- Counters: Quartz Counters and Backsplash in Primary Bath
- Exterior Covered Patio: Rear - 14x10
- Electrical: Surface Mount LEDs. Add 2 for 4 total + Dimmer switch. For Primary Bedroom (N/A for Florence).
- Fencing: Add Stain - Double Sided. For Cedar, Dog-eared, Fencing and/or Gates, 6' tall. Choose Qty (in LF) & Specify Location.
- Fencing: Cedar, Dog-eared, 6' tall. (50 ft Min. Order)
- Fencing: 4' wide Walk Gate. Cedar, Dog-eared, 6' tall.
- Doors: Upgrade Front Door. CRAFTSMAN with upper Clear Glass window
- Flooring: Great Room - Wood Laminate (Casita Court)
- Flooring: Hallway Down & Linen Closets - Wood Laminate (Casita Court)
- Garage: Garage Door Glass. Double Car Door
- Garage: Garage Door Opener
- Garage: Garage Door Opener Wireless Keypad
- Garage: Third Car Garage Door Opener
- HVAC: Air Conditioner Only (Optional "PreWire" must be previously selected).
- HVAC: PreWire Only. For future Air Conditioner or Mini Split. Dedicated 220 Outlet.
- Fireplace: Electric Fireplace - Drywall Only w/ Mantle
- Landscape: Backyard Landscaping. Up to a 60-ft wide lot
- Exterior: Stone on all Front Column(s)
- Exterior: Stone Garage Wing Wall
- Kitchen: Farm Sink - Stainless Steel Single Bowl  
\*\*REQUIRES QUARTZ COUNTERTOPS\*\*
- Kitchen or Laundry: Upgrade Faucet to Moen Arbor. SPECIFY Location(s) and Color. ( Kitchen or Laundry. Black or Spot Resistant Stainless)
- Bathroom: Freestanding Soaker Tub
- Garage :Glass inserts in third garage bay to be installed. \*\*ESTIMATED\*\*

**MonteVista**  
HOMES

**541-640-5225**

*In a continual effort to improve our product, MonteVista Homes reserves the right to change product design, features, materials, floor plans, specifications, prices and terms without prior notice. Square footage stated or implied are approximate. Images may be representative of future home and show what's possible not what's included. Seller is a licensed real estate broker in the State of Oregon. CCB#203709*

