






# Feather Ridge

Manzanita Origin  
LOT 142

3975 SW Obsidian Pl. Redmond, OR 97756

 3 Bedrooms  2.5 Bathrooms  1,415 Sq. Ft.  2 Car Garage  459,900

UNDER CONSTRUCTION



K - CRAFTSMAN



- Open Concept Great Room
- Stainless Steel Kitchen Appliances
- Primary Bedroom with Walk-In Closet
- Upstairs Laundry Room
- Covered Front Porch
- Luxury Wood Laminate Flooring
- Attached External Storage

MonteVista  
HOMES

541-640-5225

*In a continual effort to improve our product, MonteVista Homes reserves the right to change product design, features, materials, floor plans, specifications, prices and terms without prior notice. Square footage stated or implied are approximate. Images may be representative of future home and show what's possible not what's included. Seller is a licensed real estate broker in the State of Oregon. CCB#203709*



3 Bedrooms

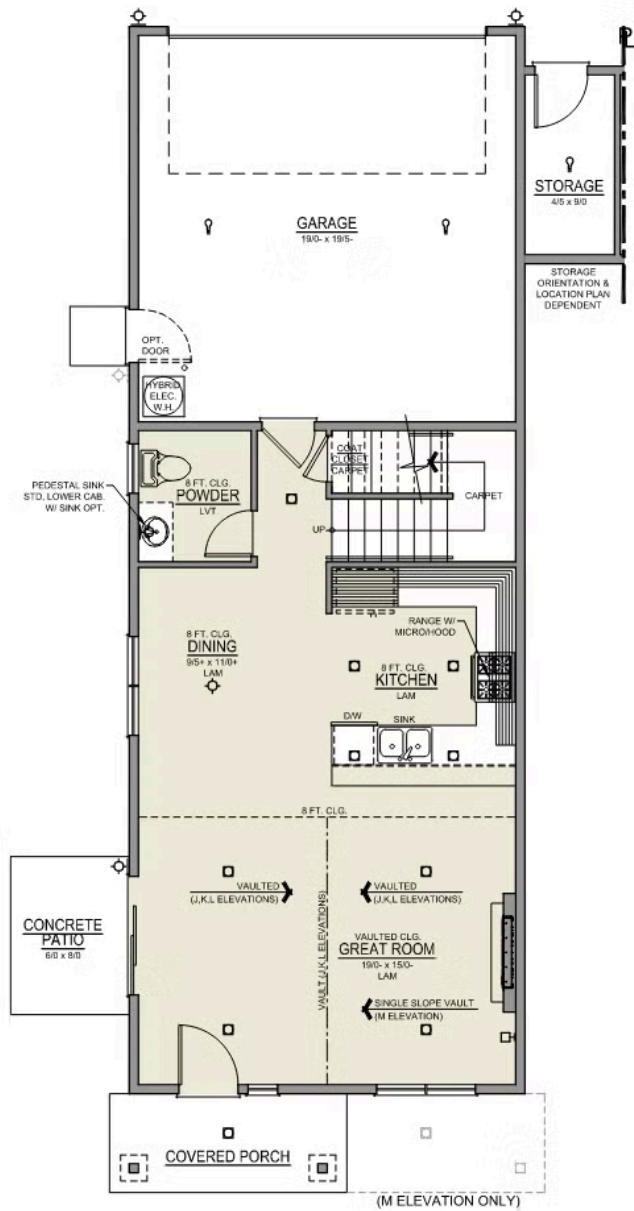
2.5 Bathrooms

1,415 Sq. Ft.

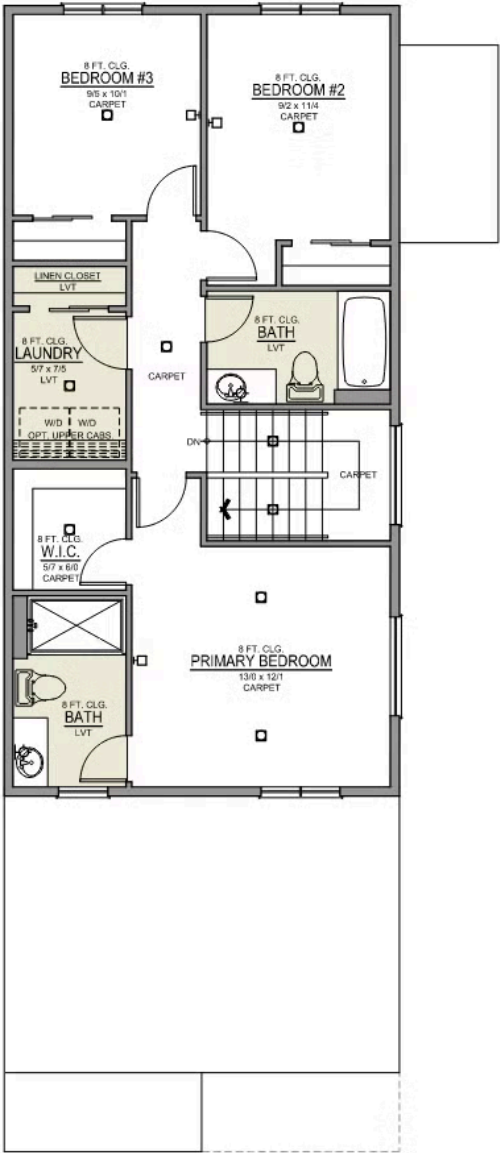
2 Car Garage

459,900

Manzanita 2-Car  
1,415 Sq. Ft.  
3 Bedroom, 2.5 Bath



MAIN FLOOR



UPPER FLOOR

# Feather Ridge

## OPTIONS

Manzanita Origin  
LOT 142

3975 SW Obsidian Pl. Redmond, OR 97756

 3 Bedrooms  2.5 Bathrooms  1,415 Sq. Ft.  2 Car Garage  459,900

- Interior Color Package: "Haven Valley". Painted Cabinets (All cabinets in house MUST be selected as "PAINTED")
- Exterior Color Package: Spring Mist
- Light Fixtures: Acadia
- Doors: Hardware Standard. "Cove" knobs / "Amador" front door handle.
- Bathroom: Shower Enclosure(s) Glass Color Choice
- Corner Lot Exterior Package: Includes Window trim on Corner Side, Flatwork and Corner Lot Landscaping
- Electrical: Tech Package Pre Wire - Includes Panel, 110 outlet, 1 Dual Wall Plate (Coax & Ethernet) in Great Room
- Kitchen: 30" Cabinets. PAINTED Kitchen & Bathroom Cabinets.
- Cabinets: Specify Color of Knobs and Pulls
- Kitchen: Full Height Tile Backsplash
- Countertops: Quartz in Kitchen
- Counters: Quartz Counters and Backsplash in Guest Bath
- Counters: Quartz Counters and Backsplash in Primary Bath
- Electrical: Ceiling Fan - PRE-WIRE ONLY. Per Room. (For Primary Bedroom, Loft, Great Room, Bonus Room, or Covered Patio).
- Garage: Garage Door Opener
- Garage: Garage Door Opener Wireless Keypad
- HVAC: System - Ductless Heating & AC "Mini Split" (Includes Prewire).
- HVAC: Add Second Head to Ductless Heating & AC "Mini Split" System.
- Fireplace: Electric Fireplace - Drywall Only w/ Mantle
- Fireplace: Add Shiplap to Electric Fireplace Drywall. Floor-to-Ceiling.
- Landscape: FR - Replace Side Yard "Gray gravel" with "Sod & 1 Sprinkler Zone".

MonteVista  
HOMES

541-640-5225

*In a continual effort to improve our product, MonteVista Homes reserves the right to change product design, features, materials, floor plans, specifications, prices and terms without prior notice. Square footage stated or implied are approximate. Images may be representative of future home and show what's possible not what's included. Seller is a licensed real estate broker in the State of Oregon. CCB#203709*

