

Feather Ridge

Manzanita Origin
LOT None

4092 SW Obsidian Pl. Redmond, OR 97756

 3 Bedrooms

 2.5 Bathrooms

 1,415 Sq. Ft.

 2 Car Garage

 None

MODEL HOME



M - MODERN



- Open Concept Great Room
 - Stainless Steel Kitchen Appliances
 - Primary Bedroom with Walk-In Closet
 - Upstairs Laundry Room
- Covered Front Porch
 - Luxury Wood Laminate Flooring
 - Luxury Vinyl Tile in Bath and Laundry
 - Attached External Storage

MonteVista
HOMES

541-640-5225

In a continual effort to improve our product, MonteVista Homes reserves the right to change product design, features, materials, floor plans, specifications, prices and terms without prior notice. Square footage stated or implied are approximate. Images may be representative of future home and show what's possible not what's included. Seller is a licensed real estate broker in the State of Oregon. CCB#203709



3 Bedrooms

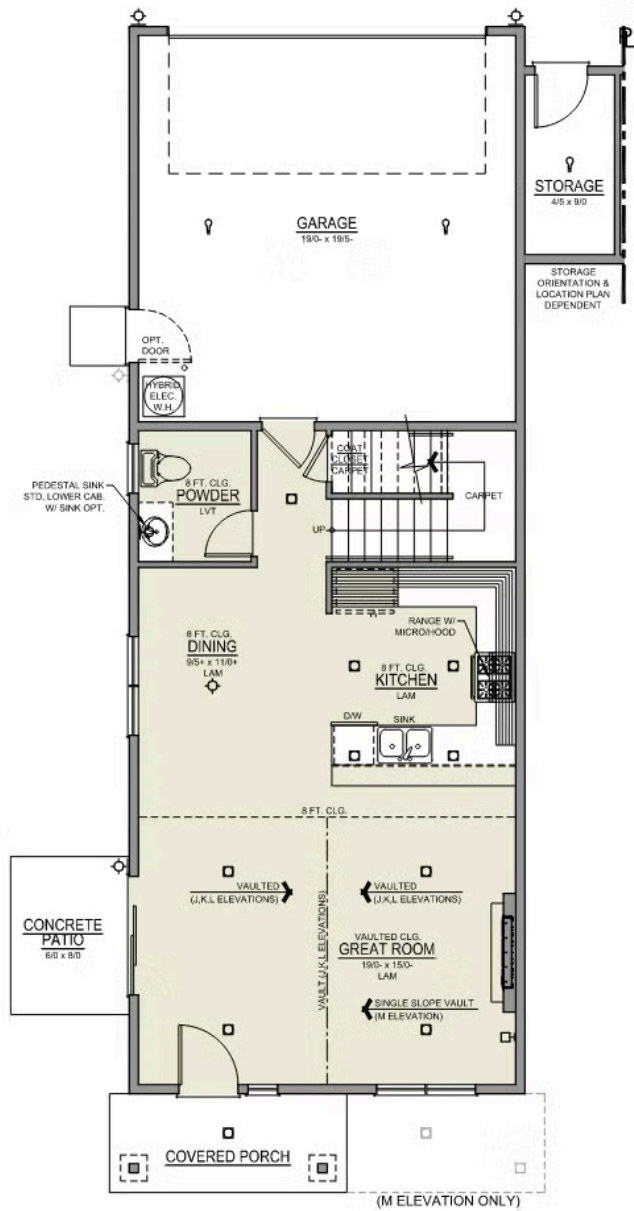
2.5 Bathrooms

1,415 Sq. Ft.

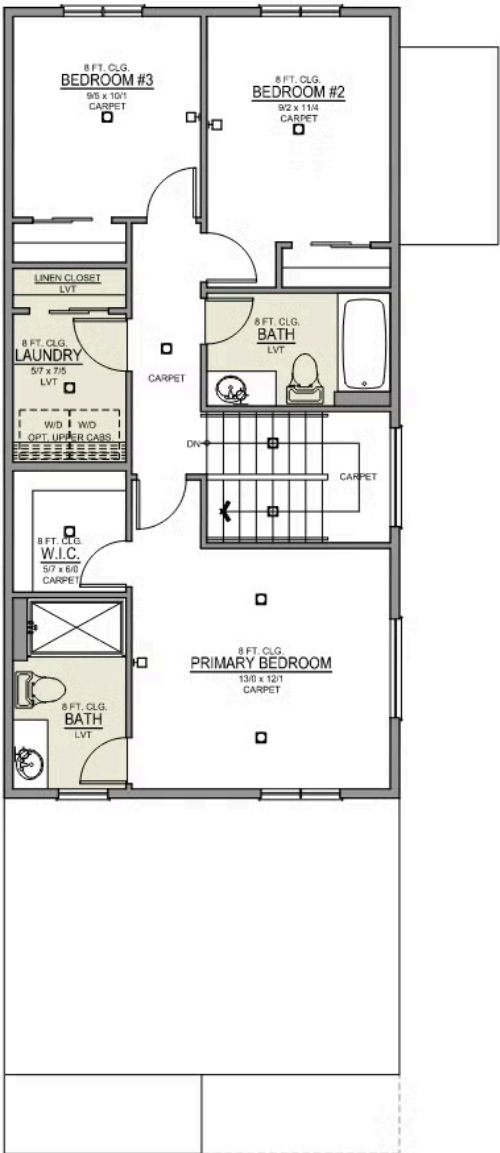
2 Car Garage

None

Manzanita 2-Car
1,415 Sq. Ft.
3 Bedroom, 2.5 Bath



MAIN FLOOR



UPPER FLOOR