

Feather Ridge

Manzanita Origin
LOT 100

4111 SW Pumice Ave. Redmond, OR 97756

3 Bedrooms 2.5 Bathrooms 1,415 Sq. Ft. 2 Car Garage 459,997

UNDER CONSTRUCTION



L - FARMHOUSE ELEVATION



The Manzanita brings surprising openness to its 1,415-square-foot footprint, with a bright, connected main-floor living space. Upstairs, the traditional bedroom layout keeps life feeling organized and restful, with each room offering comfortable space without excess. Designed for buyers who want simplicity paired with thoughtful flow, the Manzanita delivers a home that feels easy to live in.

MonteVista
HOMES

541-640-5225

In a continual effort to improve our product, MonteVista Homes reserves the right to change product design, features, materials, floor plans, specifications, prices and terms without prior notice. Square footage stated or implied are approximate. Images may be representative of future home and show what's possible not what's included. Seller is a licensed real estate broker in the State of Oregon. CCB#203709



Feather Ridge

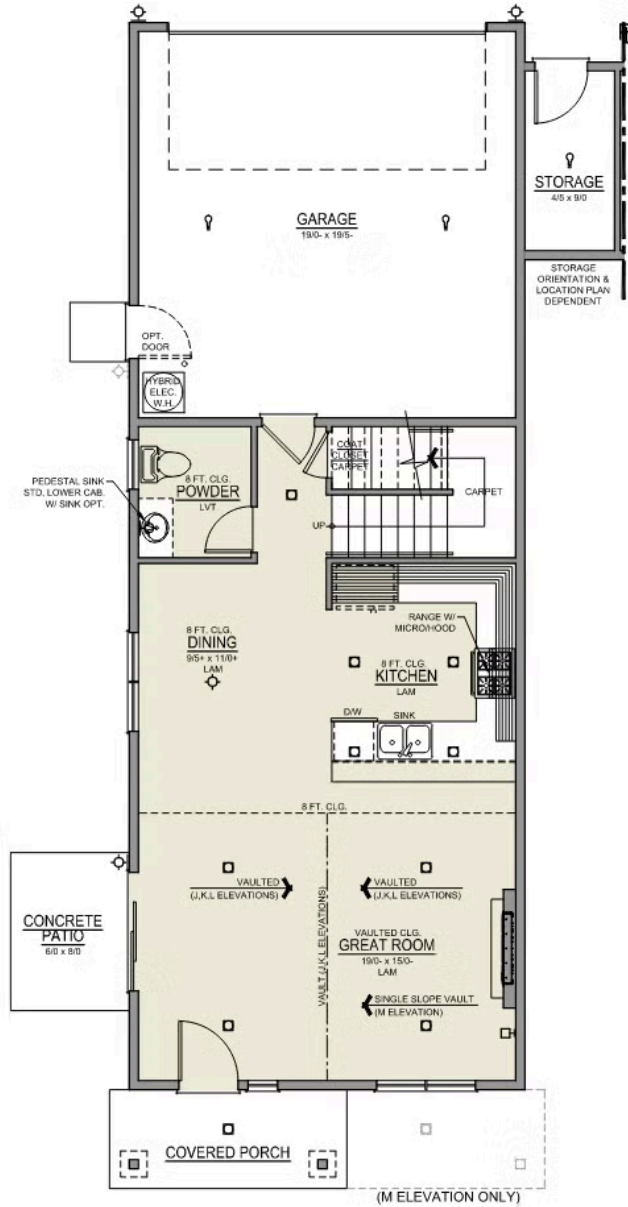
Manzanita Origin
LOT 100

4111 SW Pumice Ave. Redmond, OR 97756

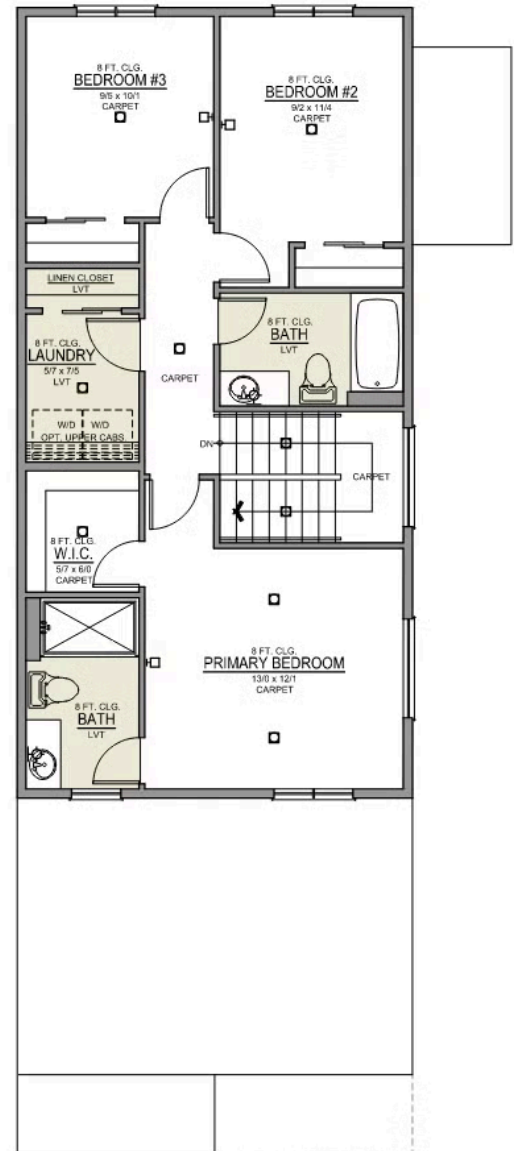
3 Bedrooms 2.5 Bathrooms 1,415 Sq. Ft. 2 Car Garage 459,997

Manzanita 2-Car

1,415 Sq. Ft.
3 Bedroom, 2.5 Bath



MAIN FLOOR



UPPER FLOOR

Feather Ridge

OPTIONS

Manzanita Origin
LOT 100

4111 SW Pumice Ave. Redmond, OR 97756

 3 Bedrooms

 2.5 Bathrooms

 1,415 Sq. Ft.

 2 Car Garage

 459,997

- Interior Color Package: "Crystal Heights". Comes with Stained Cabinets.
- Interior Walls/Trim: Walls - "Pure White" , Trim - "Drift of Mist"
- Exterior Color Package: Alpine Trail
- Light Fixtures: Acadia
- Doors: Upgrade Hardware. Ladera levers / Amador front door handle.
- Bathroom: Upgraded finishes in BLACK. Soaker Tub NOT included. All bathrooms. (Plumbing Fixtures, bath accessories and shower door hardware)
- Bathroom: Every Glass Shower Enclosure - Color Choice - "Clear Glass".
- Corner Lot Exterior Package: Includes Window trim on Corner Side, Flatwork and Corner Lot Landscaping up to the rear of the house.
- Electrical: Tech Package Pre Wire - Includes Panel, 110 outlet, 1 Dual Wall Plate (Coax & Ethernet) in Great Room
- Kitchen: Wall Range. 30" PAINTED Cabinets. All Kitchen & Bath Cabs Painted. (Premier/Origin: Upgrade Kitchen Cabs to Painted. Distinct: Not Available)
- Cabinets: Specify Color of Knobs and Pulls
- Countertops: Quartz in Kitchen (Kitchen Backsplash to be chosen separately).
- Backsplash: Quartz (6") in Kitchen.
- Counters: Quartz Counters and Backsplash in Guest Bath(s)
- Counters: Quartz Counters and Backsplash in Primary Bath
- Electrical: Ceiling Fan - PRE-WIRE ONLY & Add 1 LED Light. Per Room (For bedrooms/dens with a single light configuration).
- Kitchen: Pendant Lights over Kitchen Island - In place of recessed LED
- Garage: Man Door (Exterior door from garage to outside). Includes: Exterior coach light, 6'-8" 2-Panel door, and 40"x36" concrete landing.
- Garage: Garage Door Opener
- Garage: Garage Door Opener Wireless Keypad
- HVAC: System - Ductless Heating & AC "Mini Split" (Includes Prewire).
- HVAC: Add Second Head to Ductless Heating & AC "Mini Split" System.
- Fireplace: Electric Fireplace - Drywall Only w/ Mantle
- Landscape: FR - Replace Side Yard "Gray gravel" with "Sod & 1 Sprinkler Zone".
- Kitchen or Laundry: Upgrade Faucet to Moen Arbor. SPECIFY Location(s) and Color. (Kitchen or Laundry. Black or Spot Resistant Stainless)

MonteVista
HOMES

541-640-5225

In a continual effort to improve our product, MonteVista Homes reserves the right to change product design, features, materials, floor plans, specifications, prices and terms without prior notice. Square footage stated or implied are approximate. Images may be representative of future home and show what's possible not what's included. Seller is a licensed real estate broker in the State of Oregon. CCB#203709

