

# Feather Ridge

Manzanita  
LOT 92

4025 SW Pumice Ave. Redmond, OR 97756

3 Bedrooms 2.5 Bathrooms 1,415 Sq. Ft. 2 Car Garage 445,163

UNDER CONSTRUCTION



MANZANITA KITCHEN WITH  
COUNTERTOP SEATING



The Manzanita brings surprising openness to its 1,415-square-foot footprint, with a bright, connected main-floor living space. Upstairs, the traditional bedroom layout keeps life feeling organized and restful, with each room offering comfortable space without excess. Designed for buyers who want simplicity paired with thoughtful flow, the Manzanita delivers a home that feels easy to live in.

MonteVista  
HOMES

541-640-5225

*In a continual effort to improve our product, MonteVista Homes reserves the right to change product design, features, materials, floor plans, specifications, prices and terms without prior notice. Square footage stated or implied are approximate. Images may be representative of future home and show what's possible not what's included. Seller is a licensed real estate broker in the State of Oregon. CCB#203709*



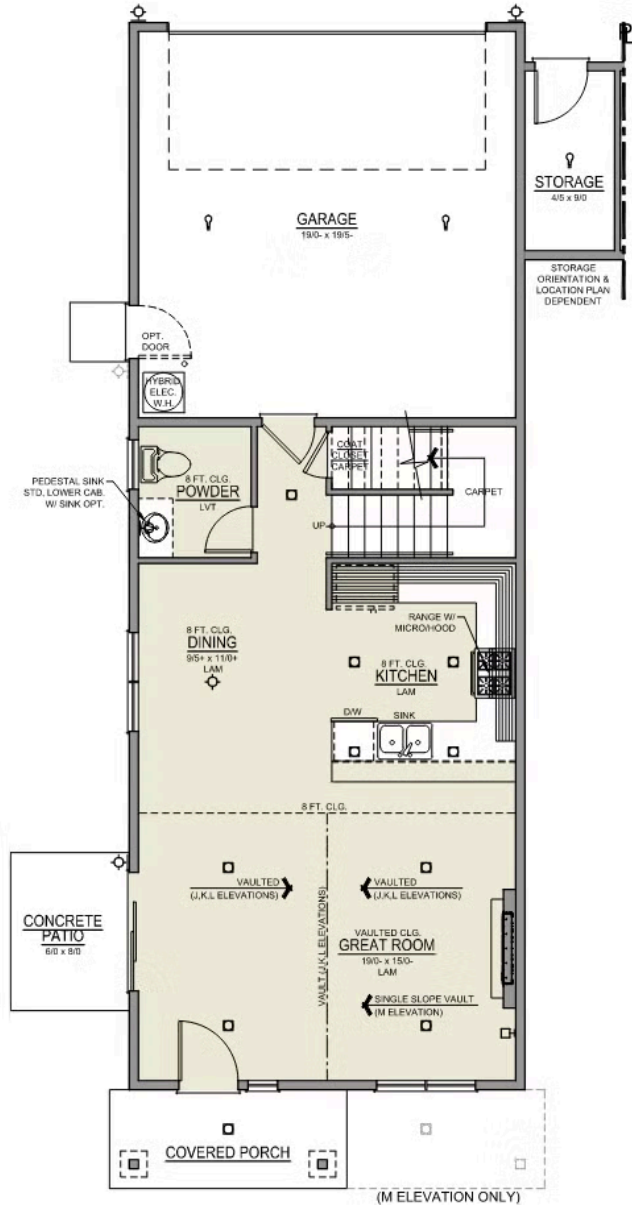
# Feather Ridge

Manzanita  
LOT 92

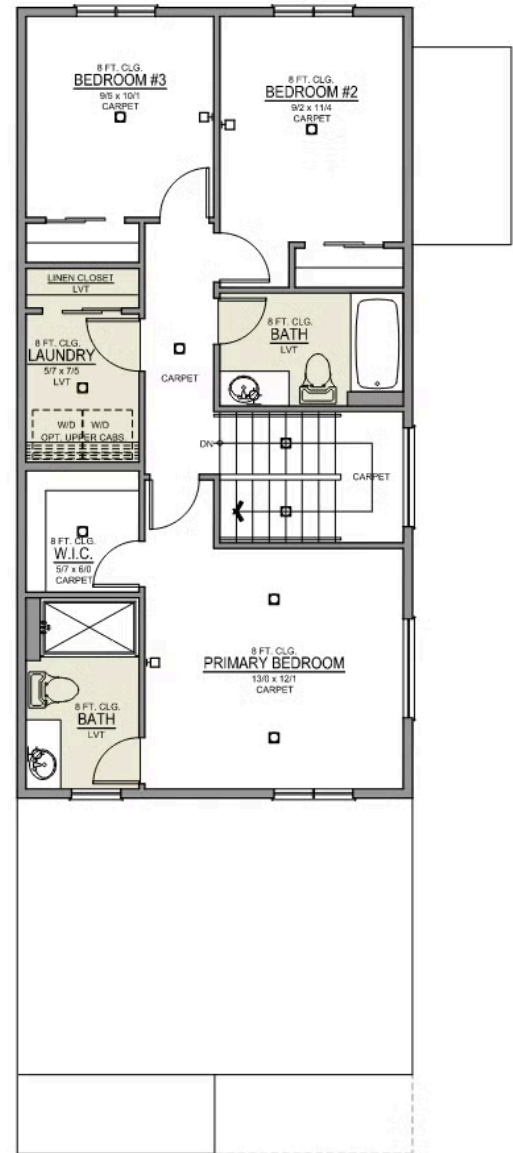
4025 SW Pumice Ave. Redmond, OR 97756

3 Bedrooms 2.5 Bathrooms 1,415 Sq. Ft. 2 Car Garage 445,163

**Manzanita 2-Car**  
1,415 Sq. Ft.  
3 Bedroom, 2.5 Bath



MAIN FLOOR



UPPER FLOOR

# Feather Ridge

## OPTIONS

Manzanita  
LOT 92

4025 SW Pumice Ave. Redmond, OR 97756

 3 Bedrooms

 2.5 Bathrooms

 1,415 Sq. Ft.

 2 Car Garage

 445,163

- Interior Color Package: "Haven Valley". Includes Stained Cabinets.
- Interior Walls/Trim: Walls - "Snowbound" , Trim - "Pure White"
- Exterior Color Package: Timberline Meadows
- Light Fixtures: Acadia
- Doors: Standard Hardware. Cove knobs / Amador front door handle.
- Bathroom: Every Glass Shower Enclosure - Color Choice - "Clear Glass".
- Electrical: Tech Package Pre Wire - Includes Panel, 110 outlet, 1 Dual Wall Plate (Coax & Ethernet) in Great Room
- Kitchen: Wall Range. 30" PAINTED Cabinets. All Kitchen & Bath Cabs Painted. (Premier/Origin: Upgrade Kitchen Cabs to Painted. Distinct: Not Available)
- Cabinets: Specify Color of Knobs and Pulls
- Countertops: Quartz in Kitchen (Kitchen Backsplash to be chosen separately).
- Backsplash: Quartz (6") in Kitchen.
- Counters: Quartz Counters and Backsplash in Guest Bath(s)
- Counters: Quartz Counters and Backsplash in Primary Bath
- Electrical: Ceiling Fan - PRE-WIRE ONLY. Per Room. (For rooms with 2 or 4-light configurations: See plan for applicability).
- Kitchen: Pendant Lights over Kitchen Island - In place of recessed LED
- Garage: Garage Door Opener
- Garage: Garage Door Opener Wireless Keypad
- HVAC: System - Ductless Heating & AC "Mini Split" (Includes Prewire).
- HVAC: Add Second Head to Ductless Heating & AC "Mini Split" System.
- Fireplace: Electric Fireplace - Drywall Only w/ Mantle
- Fireplace: Add Shiplap to Electric Fireplace
- Kitchen: Farm Sink - Stainless Steel Single Bowl **\*\*REQUIRES QUARTZ COUNTERTOPS\*\***
- Kitchen or Laundry: Upgrade Faucet to Moen Arbor. SPECIFY Location(s) and Color. ( Kitchen or Laundry. Black or Spot Resistant Stainless)

**MonteVista**  
HOMES

**541-640-5225**

*In a continual effort to improve our product, MonteVista Homes reserves the right to change product design, features, materials, floor plans, specifications, prices and terms without prior notice. Square footage stated or implied are approximate. Images may be representative of future home and show what's possible not what's included. Seller is a licensed real estate broker in the State of Oregon. CCB#203709*

