

Feather Ridge

McKenzie
LOT 74

4136 SW Pumice Ave. Redmond, OR 97756

3 Bedrooms

2 Bathrooms

1,488 Sq. Ft.

2 Car Garage

525,000

SUMMER SAVINGS HAPPENING NOW!



V - FARMHOUSE ELEVATION



The McKenzie is a compact, well-designed home that makes the most of its 1,488 square feet. A sizeable kitchen opens into the great room to create a connected, welcoming space for everyday living. Three bedrooms and two baths offer comfortable areas for rest, guests, or quiet routines, all within an easy-to-maintain footprint. With its practical layout and warm, approachable feel, the McKenzie supports the kind of simple, steady routines that make a home feel lived-in and loved.

MonteVista
HOMES

541-640-5225

In a continual effort to improve our product, MonteVista Homes reserves the right to change product design, features, materials, floor plans, specifications, prices and terms without prior notice. Square footage stated or implied are approximate. Images may be representative of future home and show what's possible not what's included. Seller is a licensed real estate broker in the State of Oregon. CCB#203709



Feather Ridge

McKenzie
LOT 74

4136 SW Pumice Ave. Redmond, OR 97756

🏠 3 Bedrooms

🚿 2 Bathrooms

🏠 1,488 Sq. Ft.

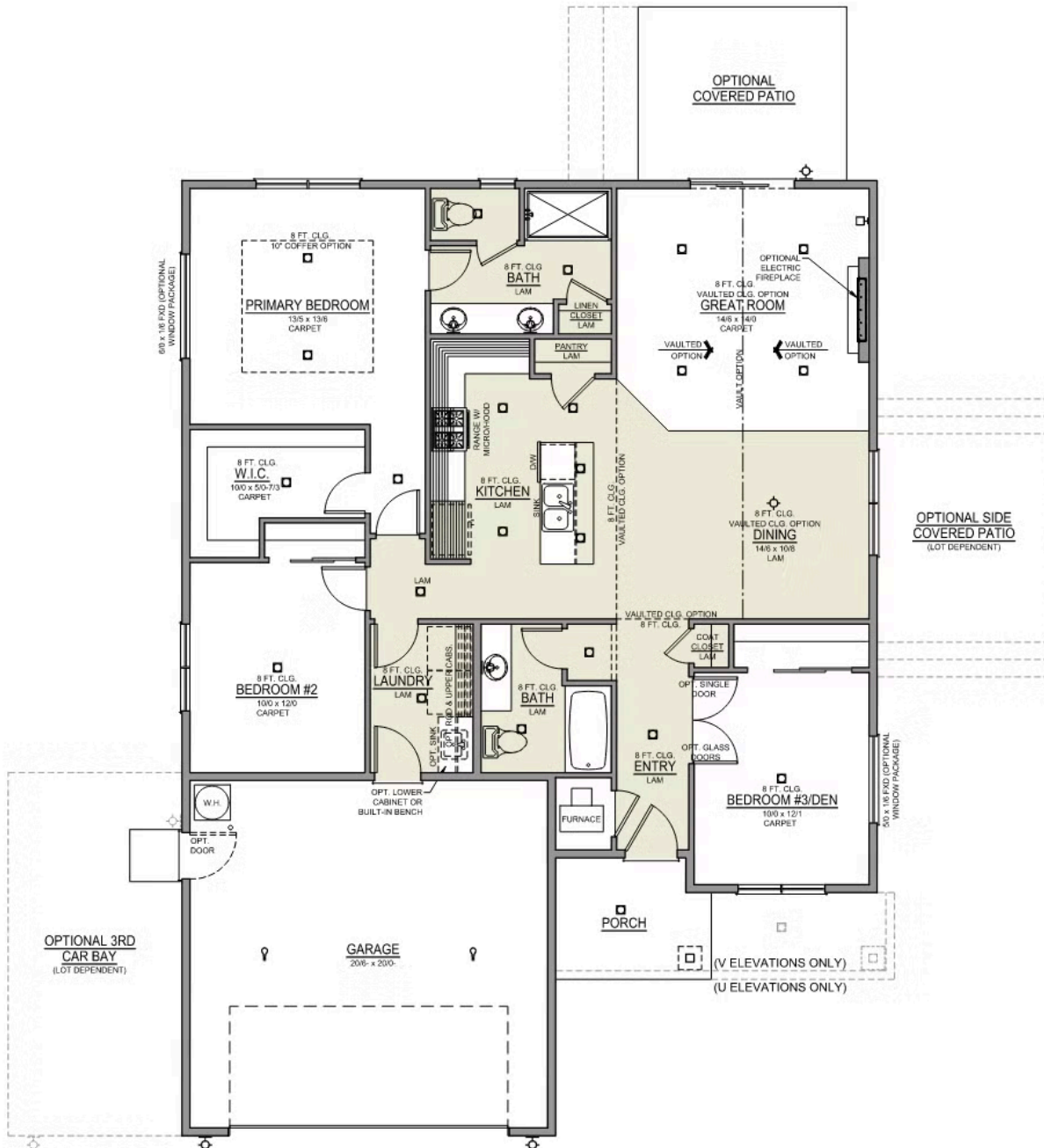
🚗 2 Car Garage

💰 525,000

McKenzie 2-Car

1,488 Sq. Ft.

3 Bedroom, 2 Bath



Feather Ridge

OPTIONS

McKenzie
LOT 74


4136 SW Pumice Ave. Redmond, OR 97756

 3 Bedrooms

 2 Bathrooms

 1,488 Sq. Ft.

 2 Car Garage

 525,000

- Interior Color Package: "Horizon Pine". Comes with Stained Cabinets.
- Interior Walls/Trim: Walls - "Snowbound" , Trim - "Pure White"
- Exterior Color Package: Rustic Woods
- Light Fixtures: Acadia
- Doors: Standard Hardware. Cove knobs / Amador front door handle.
- Bathroom: Every Glass Shower Enclosure - Color Choice - "Clear Glass".
- Electrical: Tech Package Pre Wire - Includes Panel, 110 outlet, 1 Dual Wall Plate (Coax & Ethernet) in Great Room
- Windows Package: Optional Windows
- Ceilings: (Premier Series Only) Vault in Great Room and Coffered Ceiling in Primary Bedroom.
- Kitchen: Base House (Premier/Origin). Wall Range, 30" STAINED Cabinets (All Kitchen & Bath Cabs Stained).
- Cabinets: Specify Color of Knobs and Pulls
- Counters: Quartz Counters and Backsplash (6") in Kitchen
- Counters: Quartz Counters and Backsplash in Guest Bath
- Counters: Quartz Counters and Backsplash in Primary Bath
- Exterior Covered Patio: Rear - 12x10
- Electrical: Surface Mount LEDs. Add 2 for 4 total + Dimmer switch. For Primary Bedroom (N/A for Florence).
- Fencing: Add Stain - Double Sided. For Cedar, Dog-eared, Fencing and/or Gates, 6' tall. Choose Qty (in LF) & Specify Location.
- Fencing: Cedar, Dog-eared, 6' tall. (50 ft Min. Order)
- Fencing: 4' wide Walk Gate. Cedar, Dog-eared, 6' tall.
- Garage: Garage Door Opener
- Garage: Garage Door Opener Wireless Keypad
- HVAC: Air Conditioner Only (Optional "PreWire" must be previously selected).
- HVAC: PreWire Only. For future Air Conditioner or Mini Split. Dedicated 220 Outlet.
- Fireplace: Electric Fireplace - Drywall Only w/ Mantle
- Landscape: Backyard Landscaping. Up to a 60-ft wide lot
- Kitchen or Laundry: Upgrade Faucet to Moen Arbor. SPECIFY Location(s) and Color. (Kitchen or Laundry. Black or Spot Resistant Stainless)

MonteVista
HOMES

541-640-5225

In a continual effort to improve our product, MonteVista Homes reserves the right to change product design, features, materials, floor plans, specifications, prices and terms without prior notice. Square footage stated or implied are approximate. Images may be representative of future home and show what's possible not what's included. Seller is a licensed real estate broker in the State of Oregon. CCB#203709

