

Premier Collection

# Miranda Premier

Feather Ridge

 4 Bedrooms

 3 Bathrooms

 2,517 Sq. Ft.

 2 Car Garage



T - TRADITIONAL



V - FARMHOUSE



- 9 Foot Ceilings throughout Main Level
- Great Room with Fireplace
- Kitchen Island with Sink
- Kitchen Pantry

- Upstairs Bonus Room / Loft
- Primary Suite with Walk-in Closet
- Quartz Countertops throughout Home
- Stainless Steel Appliances

**MonteVista**  
HOMES

**541-640-5225**

*In a continual effort to improve our product, MonteVista Homes reserves the right to change product design, features, materials, floor plans, specifications, prices and terms without prior notice. Square footage stated or implied are approximate. Images may be representative of future home and show what's possible not what's included. Seller is a licensed real estate broker in the State of Oregon. CCB#203709*



Premier Collection

# Miranda Premier

Feather Ridge

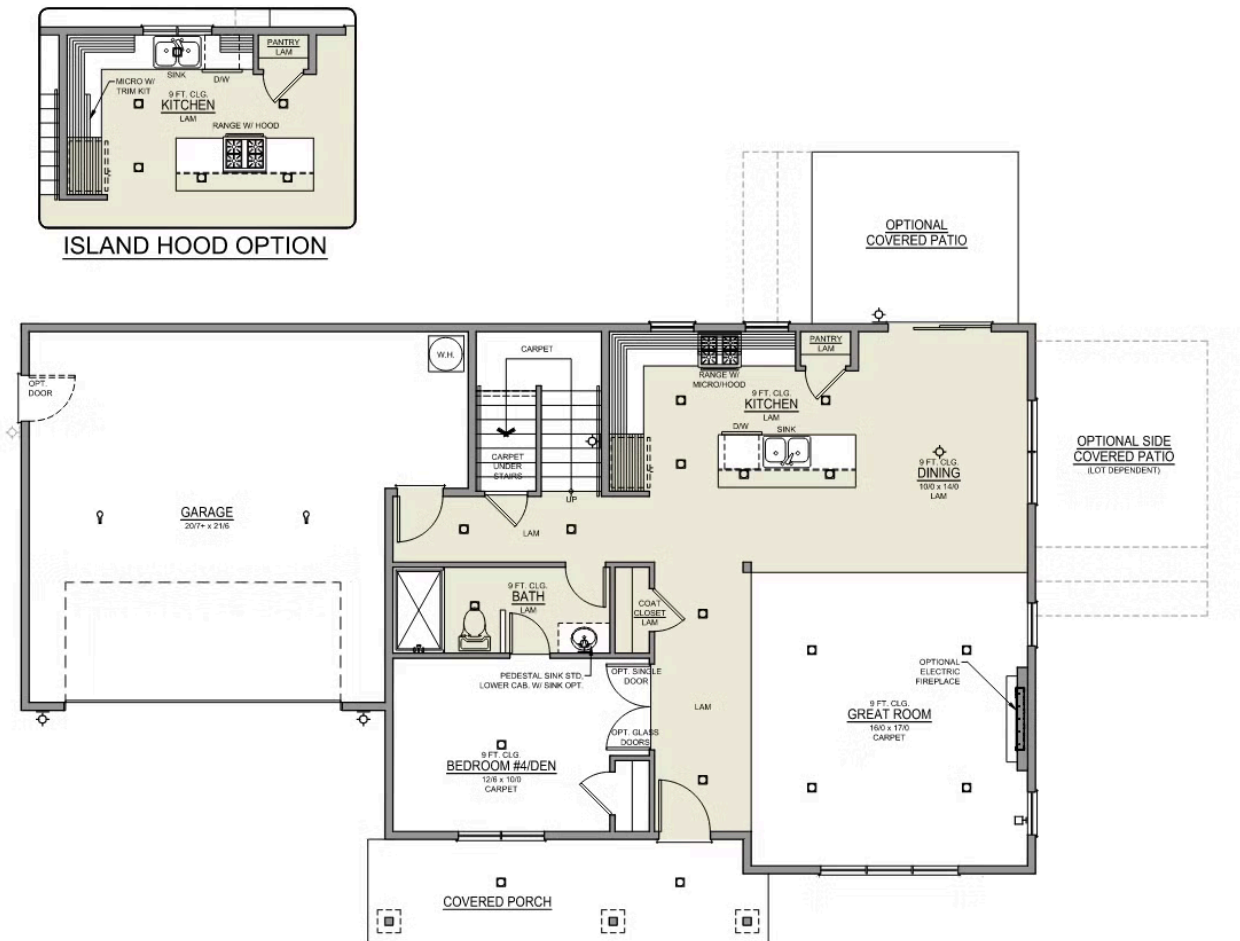
 4 Bedrooms

 3 Bathrooms

 2,517 Sq. Ft.

 2 Car Garage

Miranda 2-Car  
2,517 Sq. Ft.  
4 Bedroom, 3 Bath



MAIN FLOOR

Premier Collection

# Miranda Premier

Feather Ridge

 4 Bedrooms

 3 Bathrooms

 2,517 Sq. Ft.

 2 Car Garage

