

# Feather Ridge

Newport  
LOT 96

4067 SW Pumice Ave. Redmond, OR 97756

🏠 2 Bedrooms

🚿 2 Bathrooms

🏠 970 Sq. Ft.

🚗 2 Car Garage

🏷️ 414,000

UNDER CONSTRUCTION



M - MODERN ELEVATION



The Newport is a masterclass in efficiency, offering comfortable, simple living within a low-maintenance 970 square feet. An intuitive, open layout features a connected kitchen and great room at the core, perfect for daily routines. Two full bathrooms, including a private primary suite that gives the home a surprising level of functionality and comfort. With its compact size and thoughtful design, the Newport delivers a solid, welcoming foundation for those who value simplicity and ease.

MonteVista  
HOMES

541-640-5225

*In a continual effort to improve our product, MonteVista Homes reserves the right to change product design, features, materials, floor plans, specifications, prices and terms without prior notice. Square footage stated or implied are approximate. Images may be representative of future home and show what's possible not what's included. Seller is a licensed real estate broker in the State of Oregon. CCB#203709*



# Feather Ridge

Newport  
LOT 96

4067 SW Pumice Ave. Redmond, OR 97756

2 Bedrooms

2 Bathrooms

970 Sq. Ft.

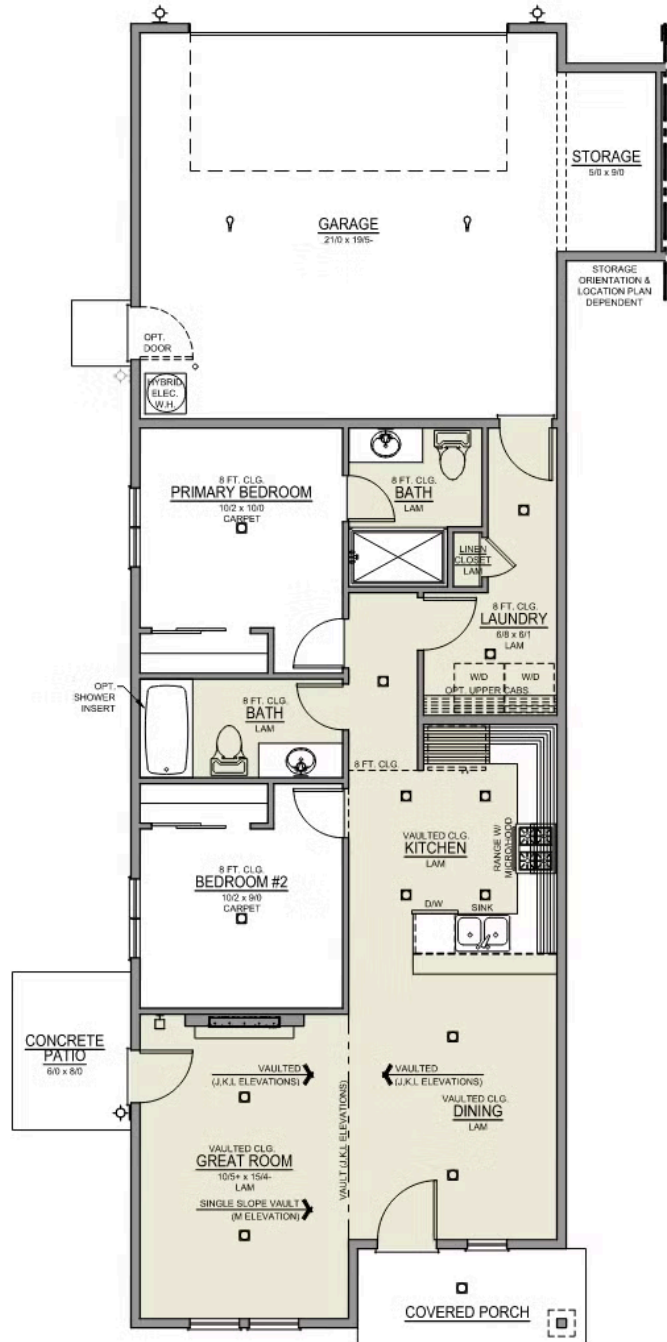
2 Car Garage

414,000

## Newport 2-Car

970 Sq. Ft.

2 Bedroom, 2 Bath



# Feather Ridge

## OPTIONS

Newport  
LOT 96

4067 SW Pumice Ave. Redmond, OR 97756

 2 Bedrooms

 2 Bathrooms

 970 Sq. Ft.

 2 Car Garage

 414,000

- Interior Color Package: "Mountain Vogue". Includes Stained Cabinets.
- Interior Walls/Trim: Walls - "Snowbound" , Trim - "Pure White"
- Exterior Color Package: Timberline Meadows
- Light Fixtures: Acadia
- Doors: Standard Hardware. Cove knobs / Amador front door handle.
- Electrical: Tech Package Pre Wire - Includes Panel, 110 outlet, 1 Dual Wall Plate (Coax & Ethernet) in Great Room
- Kitchen: Base House (Premier/Origin). Wall Range, 30" STAINED Cabinets (All Kitchen & Bath Cabs Stained).
- Laundry Uppers: Add 30" STAINED Upper Cabs above Washer/Dryer. (Premier/Origin Series)
- Cabinets: Specify Color of Knobs and Pulls
- Countertops: Quartz in Kitchen (Kitchen Backsplash to be chosen separately).
- Backsplash: Quartz (6") in Kitchen.
- Counters: Quartz Counters and Backsplash in Guest Bath(s)
- Counters: Quartz Counters and Backsplash in Primary Bath
- Bathroom: Replace Fiberglass "Tub/Shower" with Fiberglass "Walk-In Shower" + Glass door.
- Electrical: Ceiling Fan - PRE-WIRE ONLY & Add 1 LED Light. Per Room (For bedrooms/dens with a single light configuration).
- Garage: Garage Door Opener
- Garage: Garage Door Opener Wireless Keypad
- HVAC: System - Ductless Heating & AC "Mini Split" (Includes Prewire).
- Kitchen: Farm Sink - Stainless Steel Single Bowl  
\*\*REQUIRES QUARTZ COUNTERTOPS\*\*
- Kitchen or Laundry: Upgrade Faucet to Moen Arbor. SPECIFY Location(s) and Color. ( Kitchen or Laundry. Black or Spot Resistant Stainless)

MonteVista  
HOMES

541-640-5225

*In a continual effort to improve our product, MonteVista Homes reserves the right to change product design, features, materials, floor plans, specifications, prices and terms without prior notice. Square footage stated or implied are approximate. Images may be representative of future home and show what's possible not what's included. Seller is a licensed real estate broker in the State of Oregon. CCB#203709*

