

Feather Ridge

Sycamore
LOT 71

4162 SW Pumice Ave. Redmond, OR 97756

3 Bedrooms

2 Bathrooms

1,553 Sq. Ft.

2 Car Garage

530,000

UNDER CONSTRUCTION



The Sycamore delivers comfortable single-level living in a 1,553-square-foot, easy-to-maintain footprint. An open kitchen flows into the dining area and great room, creating a warm central space for gathering and everyday routines. The primary suite sits quietly at the back of the home, while two additional bedrooms offer flexibility for guests, work, or hobbies. With its inviting front porch, intuitive layout, and just-right amount of space, the Sycamore offers a relaxed, welcoming backdrop for the rhythms of daily life.

MonteVista
HOMES

541-640-5225

In a continual effort to improve our product, MonteVista Homes reserves the right to change product design, features, materials, floor plans, specifications, prices and terms without prior notice. Square footage stated or implied are approximate. Images may be representative of future home and show what's possible not what's included. Seller is a licensed real estate broker in the State of Oregon. CCB#203709



Feather Ridge

Sycamore
LOT 71

4162 SW Pumice Ave. Redmond, OR 97756

3 Bedrooms

2 Bathrooms

1,553 Sq. Ft.

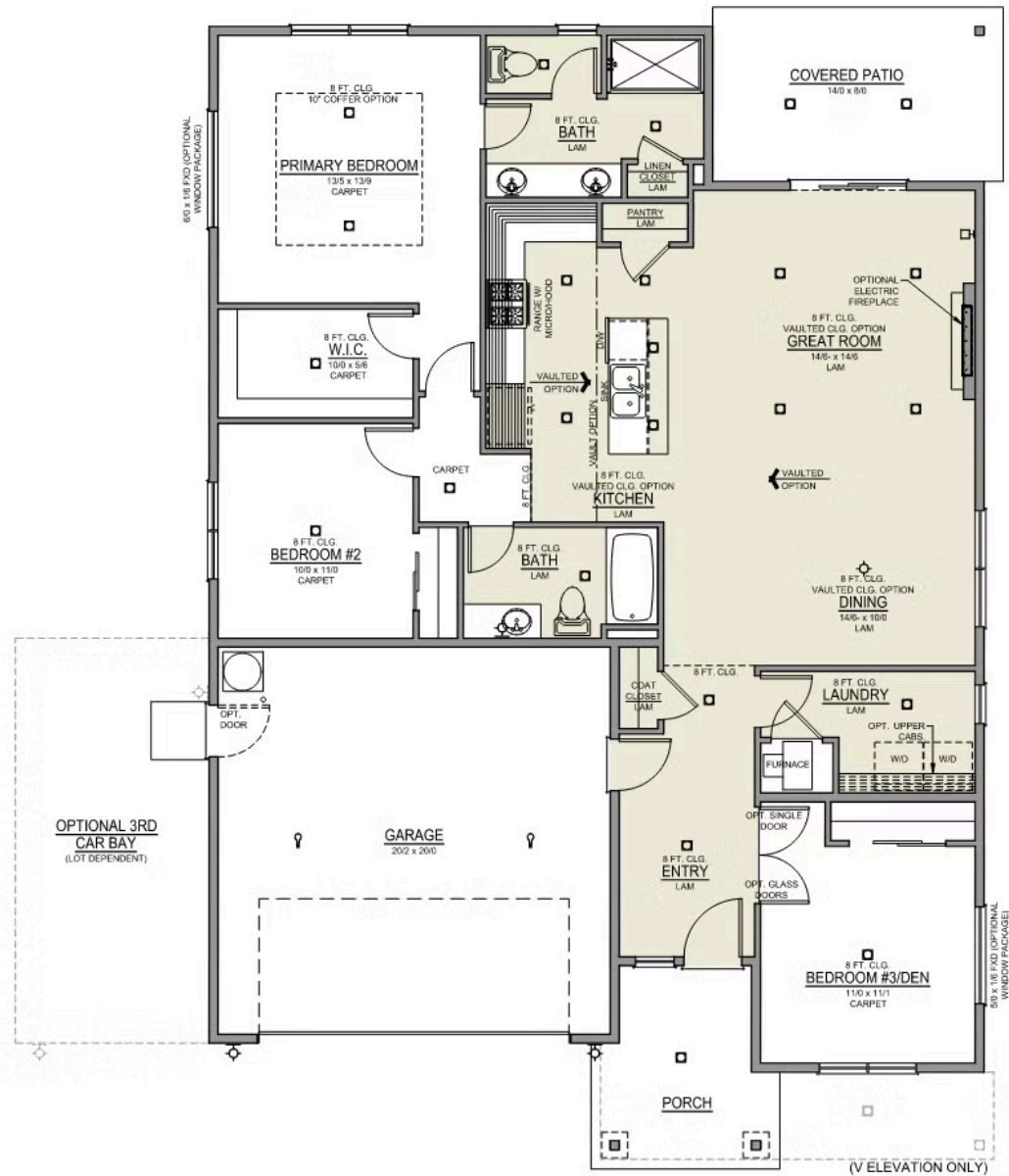
2 Car Garage

530,000

Sycamore 2-Car

1,553 Sq. Ft.

3 Bedroom, 2 Bath



Feather Ridge

OPTIONS

Sycamore
LOT 71

4162 SW Pumice Ave. Redmond, OR 97756

 3 Bedrooms

 2 Bathrooms

 1,553 Sq. Ft.

 2 Car Garage

 530,000

- Interior Color Package: "Granite Shoreline". Comes with Stained Cabinets.
- Interior Walls/Trim: Walls - "Snowbound" , Trim - "Pure White"
- Exterior Color Package: Alpine Trail
- Light Fixtures: Acadia
- Doors: Standard Hardware. Cove knobs / Amador front door handle.
- Bathroom: Every Glass Shower Enclosure - Color Choice - "Clear Glass".
- Electrical: Tech Package Pre Wire - Includes Panel, 110 outlet, 1 Dual Wall Plate (Coax & Ethernet) in Great Room
- Windows Package: Optional Windows
- Ceilings: (Premier Series Only) Vault in Great Room and Coffered Ceiling in Primary Bedroom.
- Kitchen: Base House (Premier/Origin). Wall Range, 30" STAINED Cabinets (All Kitchen & Bath Cabs Stained).
- Appliances: Replace Freestanding Wall Range with Slide in Gas Range (Only applicable for wall range kitchen configurations)
- Laundry Uppers: Add 30" STAINED Upper Cabs above Washer/Dryer. (Premier/Origin Series)
- Cabinets: Specify Color of Knobs and Pulls
- Counters: Quartz Counters and Backsplash (6") in Kitchen
- Counters: Quartz Counters and Backsplash in Guest Bath(s)
- Counters: Quartz Counters and Backsplash in Primary Bath
- Electrical: Surface Mount LEDs. Add 2 for 4 total + Dimmer switch. For Primary Bedroom (N/A for Florence).
- Fencing: Add Stain - Double Sided. For Cedar, Dog-eared, Fencing and/or Gates, 6' tall. Choose Qty (in LF) & Specify Location.
- Fencing: Cedar, Dog-eared, 6' tall. (50 ft Min. Order)
- Fencing: 4' wide Walk Gate. Cedar, Dog-eared, 6' tall.
- Garage: Garage Door Opener
- Garage: Garage Door Opener Wireless Keypad
- HVAC: Air Conditioner Only (Optional "PreWire" must be previously selected).
- HVAC: PreWire Only. For future Air Conditioner or Mini Split. Dedicated 220 Outlet.
- Fireplace: Electric Fireplace - Drywall Only w/ Mantle
- Landscape: Backyard Landscaping. Up to a 60-ft wide lot
- Kitchen or Laundry: Upgrade Faucet to Moen Arbor. SPECIFY Location(s) and Color. (Kitchen or Laundry. Black or Spot Resistant Stainless)

MonteVista
HOMES

541-640-5225

In a continual effort to improve our product, MonteVista Homes reserves the right to change product design, features, materials, floor plans, specifications, prices and terms without prior notice. Square footage stated or implied are approximate. Images may be representative of future home and show what's possible not what's included. Seller is a licensed real estate broker in the State of Oregon. CCB#203709

