

McClannahan Summit

Camellia Premier
LOT 99

565 Grant St. Umatilla, OR 97882

3 Bedrooms 2 Bathrooms 1,249 Sq. Ft. 2 Car Garage 326,400

MOVE-IN READY



V - FARMHOUSE



- Quartz Countertops throughout Home
- Stainless Steel Appliances
- Kitchen Island with Sink
- Great Room with Gas Fireplace
- Laundry/Mud Room access from garage

MonteVista
HOMES

541-833-9119

In a continual effort to improve our product, MonteVista Homes reserves the right to change product design, features, materials, floor plans, specifications, prices and terms without prior notice. Square footage stated or implied are approximate. Images may be representative of future home and show what's possible not what's included. Seller is a licensed real estate broker in the State of Oregon. CCB#203709



Camellia Premier

LOT 99

565 Grant St. Umatilla, OR 97882

 3 Bedrooms

 2 Bathrooms

1,249 Sq. Ft.

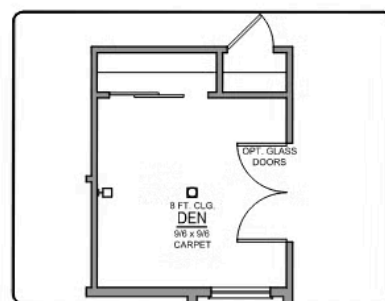
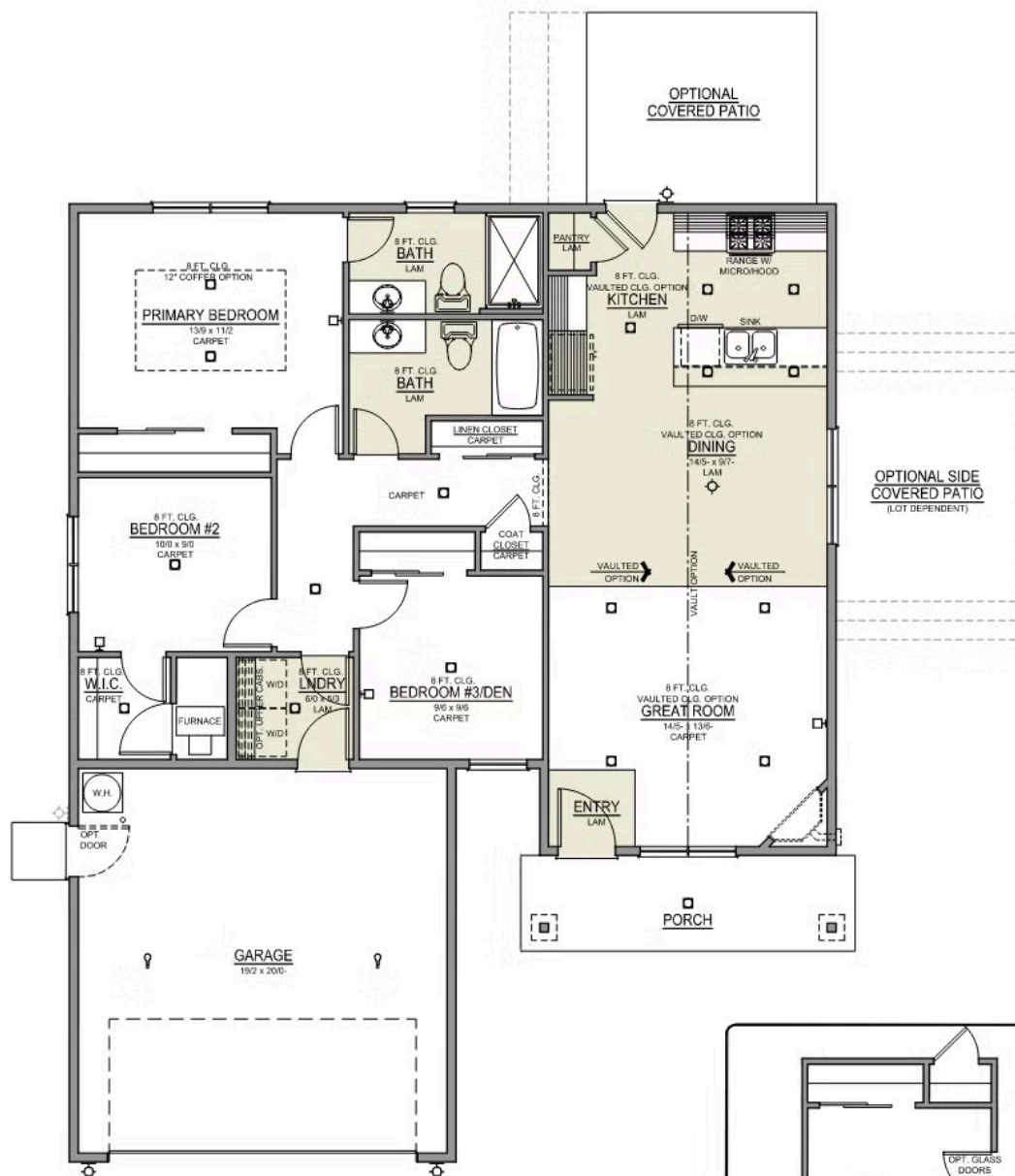
 2 Car Garage

 326,400

Camellia 2-Car

1,249 Sq. Ft.

3 Bedroom, 2 Bath



DEN DOUBLE DOOR OPTION

McClannahan Summit

OPTIONS

Camellia Premier
LOT 99

565 Grant St. Umatilla, OR 97882

 3 Bedrooms

 2 Bathrooms

 1,249 Sq. Ft.

 2 Car Garage

 326,400

- Interior Color Package: "Urban Oasis"
 - Exterior Color Package: Alpine Trail
 - Light Fixtures: Acadia
 - Doors: Hardware Standard. "Cove" knobs / "Amador" front door handle.
 - Bathroom: Upgrade finishes to BLACK. Soaker Tub INCLUDED. All bathrooms. (Plumbing Fixtures, bath accessories and shower door hardware)
 - Bathroom: Shower Enclosure(s) Glass Color Choice
 - Electrical: Tech Package Pre Wire - Includes Panel, 110 outlet, 1 Dual Wall Plate (Coax & Ethernet) in Great Room
 - Ceilings: (Premier Series Only) Vault in Great Room and Coffered Ceiling in Primary Bedroom.
 - Cabinets: Specify Color of Knobs and Pulls
 - Counters: Quartz Counters and Backsplash in Kitchen
- Counters: Quartz Counters and Backsplash in Guest Bath
 - Counters: Quartz Counters and Backsplash in Primary Bath
 - Exterior Covered Patio: Rear - 12x10
 - Flooring: Great Room - Wood Laminate (Casita Court)
 - Flooring: Hallway Down - Wood Laminate (Casita Court)
 - Garage: Garage Door Opener
 - Garage: Garage Door Opener Wireless Keypad
 - HVAC: Air Conditioner - PreWire not previously selected (Not available for Duets)
 - Fireplace: Gas Fireplace (Direct Vent) with Mantel and Stone Surround
 - Garage: Insulated Garage - 2 Car Bays. Walls and Ceiling (Garage Door already insulated).

MonteVista
HOMES

541-833-9119

In a continual effort to improve our product, MonteVista Homes reserves the right to change product design, features, materials, floor plans, specifications, prices and terms without prior notice. Square footage stated or implied are approximate. Images may be representative of future home and show what's possible not what's included. Seller is a licensed real estate broker in the State of Oregon. CCB#203709

