

McClannahan Summit

Camellia Premier
LOT 77

594 Taft St. Umatilla, OR 97882

3 Bedrooms

2 Bathrooms

1,249 Sq. Ft.

2 Car Garage

334,997

MOVE-IN READY



CAMELLIA FARMHOUSE ELEVATION



At 1,249 square feet, the Camellia is an approachable home that gives buyers thoughtful design and comfortable living without extra complexity. The open kitchen and great room invite easy daily connection, while three bedrooms offer room for rest, guests, or a small office. With its efficient layout and manageable footprint, the Camellia keeps everyday life feeling simple and purposeful. Designed with affordability and ease in mind, it's a solid foundation where routines come naturally and a sense of home takes shape around the moments that matter.

MonteVista
HOMES

541-833-9119

In a continual effort to improve our product, MonteVista Homes reserves the right to change product design, features, materials, floor plans, specifications, prices and terms without prior notice. Square footage stated or implied are approximate. Images may be representative of future home and show what's possible not what's included. Seller is a licensed real estate broker in the State of Oregon. CCB#203709



McClannahan Summit

Camellia Premier
LOT 77

594 Taft St. Umatilla, OR 97882

🛏 3 Bedrooms

🚿 2 Bathrooms

🏠 1,249 Sq. Ft.

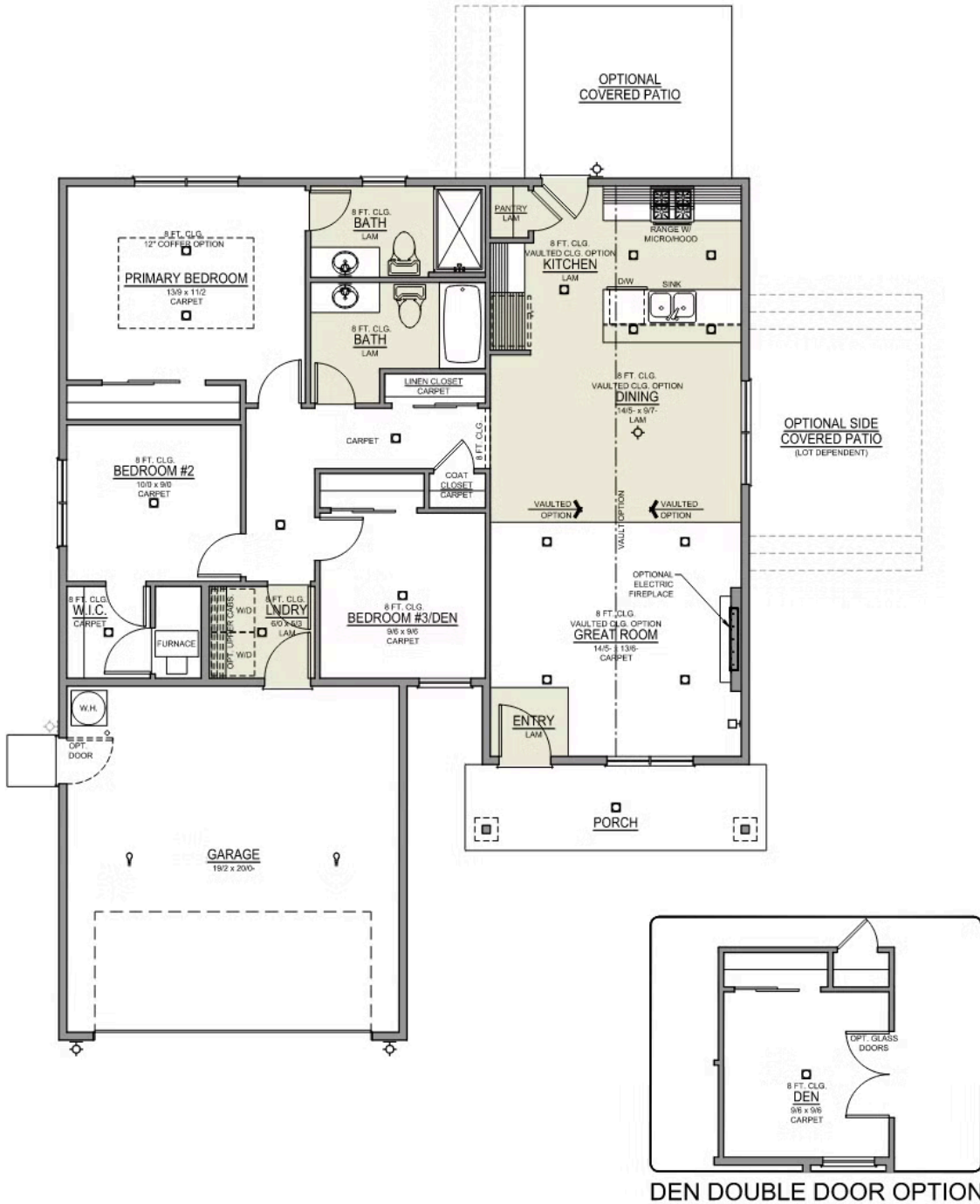
🚗 2 Car Garage

🏷 334,997

Camellia 2-Car

1,249 Sq. Ft.

3 Bedroom, 2 Bath



McClannahan Summit

OPTIONS

Camellia Premier
LOT 77


594 Taft St. Umatilla, OR 97882

 3 Bedrooms

 2 Bathrooms

 1,249 Sq. Ft.

 2 Car Garage

 334,997

- Interior Color Package: "Urban Oasis". Comes with Stained Cabinets.
- Interior Walls/Trim: Walls - "Pure White" , Trim - "Drift of Mist"
- Exterior Color Package: Alpine Trail
- Light Fixtures: Acadia
- Doors: Standard Hardware. Cove knobs / Amador front door handle.
- Bathroom: Every Glass Shower Enclosure - Color Choice - "Clear Glass".
- Electrical: Tech Package Pre Wire - Includes Panel, 110 outlet, 1 Dual Wall Plate (Coax & Ethernet) in Great Room
- Ceilings: (Premier Series Only) Vault in Great Room and Coffered Ceiling in Primary Bedroom.
- Kitchen: Base House (Premier/Origin). Wall Range, 30" STAINED Cabinets (All Kitchen & Bath Cabs Stained).
- Cabinets: Specify Color of Knobs and Pulls
- Counters: Quartz Counters and Backsplash (6") in Kitchen
- Counters: Quartz Counters and Backsplash in Guest Bath
- Counters: Quartz Counters and Backsplash in Primary Bath
- Fencing: Cedar, Dog-eared, 6' tall. (50 ft Min. Order)
- Fencing: 4' wide Walk Gate. Cedar, Dog-eared, 6' tall.
- Flooring: Great Room - Wood Laminate (Casita Court)
- Flooring: Hallway Down - Wood Laminate (Casita Court)
- Garage: Garage Door Opener
- Garage: Garage Door Opener Wireless Keypad
- HVAC: System - Air Conditioner (Includes PreWire). *Not available for Duets.
- Fireplace: Electric Fireplace - Drywall Only w/ Mantle
- Landscape: Backyard Landscaping. Up to a 60-ft wide lot

MonteVista
HOMES

541-833-9119

In a continual effort to improve our product, MonteVista Homes reserves the right to change product design, features, materials, floor plans, specifications, prices and terms without prior notice. Square footage stated or implied are approximate. Images may be representative of future home and show what's possible not what's included. Seller is a licensed real estate broker in the State of Oregon. CCB#203709

